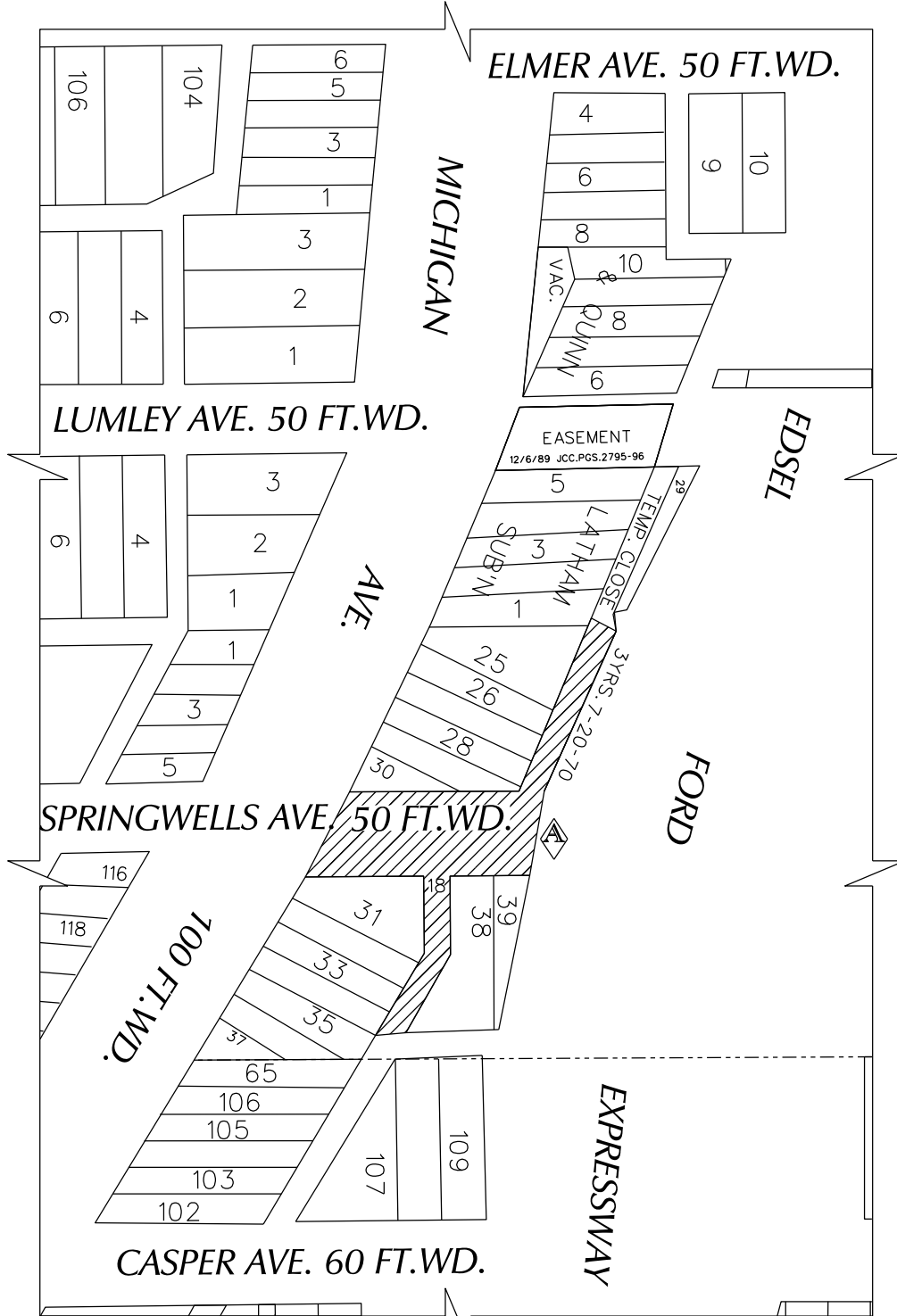


PETITION NO. 723  
 MARK FRASER  
 1378 WOODBRIDGE ST.  
 DETROIT, MICHIGAN 48207  
 PHONE NO. (248) 763-8934

"REVISION-A"



- CONVERSION TO EASEMENT

(FOR OFFICE USE ONLY)

CARTO 4 A

<b>B</b>					
<b>A</b>	REVISOR: CHANGING FROM OUTRIGHT VACATION TO CONVERSION TO EASEMENT.	SA	KSM	JD	12/11/19
	<b>DESCRIPTION</b>	<b>DRWN</b>	<b>CHKD</b>	<b>APPD</b>	<b>DATE</b>
<b>REVISIONS</b>					
<b>DRAWN BY</b>	SA	<b>CHECKED</b>		KSM	
<b>DATE</b>	10-8-19	<b>APPROVED</b>			

CONVERSION TO EASEMENT :-  
 - SPRINGWELLS AVE. BETWEEN MICHIGAN AVE. AND EDSSEL FORD EXPRESSWAY.  
 - PUBLIC ALLEY LOCATED BEHIND 7900 MICHIGAN AVE. BETWEEN ELMER AVE. AND SPRINGWELLS AVE.  
 - PART OF PUBLIC ALLEY LOCATED BETWEEN SPRINGWELLS AVE. AND CASPER AVE.

<b>CITY OF DETROIT</b>	
CITY ENGINEERING DIVISION	
SURVEY BUREAU	
<b>JOB NO.</b>	01-01
<b>DRWG. NO.</b>	X 723