

TO: City Engineering Division, DPW  
2 Woodward Ave., Suite 642  
Detroit, MI 48226-3462  
Survey Bureau: 313-224-3970

Petition No. 722

The proposed change in property (referred to above) would affect our services as follows:

- ( ) Not Involved.
- ( ) Involved; but asking you to hold action on this petition until further notice.
- ( ) Involved; the nature of our services, and the estimated costs of removing and/or rerouting such services are:
- (X) Involved; have no objection to request for encroachment 172.1 feet along Second Blvd. and the request for a public access easement 334.0 feet long along Amsterdam St. as shown on drawing no. X722 dated 05/07/2019 provided that the petitioner maintains an unobstructed 6 feet clear sidewalk that is ADA compliant in the requested area.

Traffic Engineering Division - DPW  
(Utility or City Department)

Ashok Patel  
By

*Sunny Jacob*

City Traffic Engineer  
Title

July 24, 2019  
Date

313 224-1610  
Area code-Telephone number

AA/aa

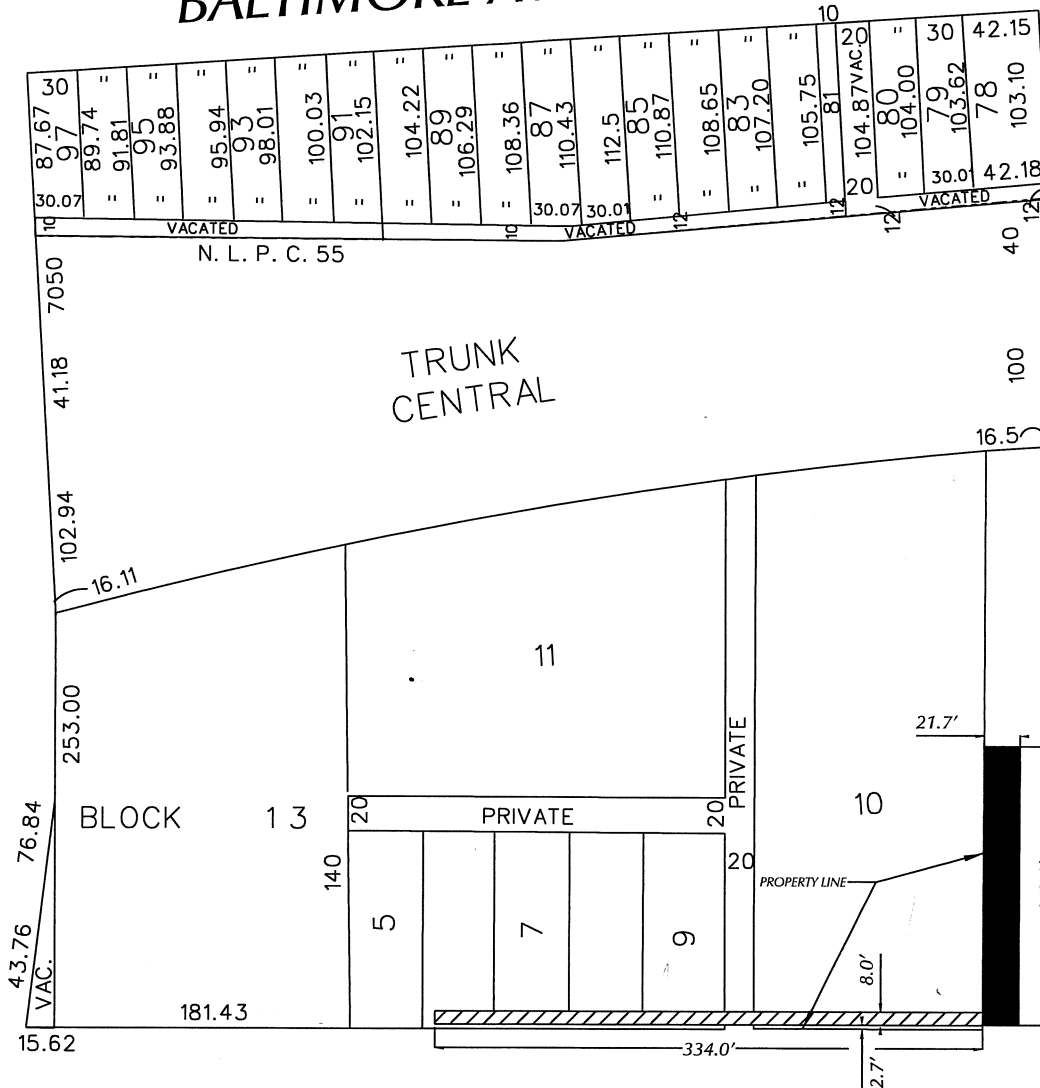
PETITION NO. 722  
 GIFFELS WEBSTER  
 28 W. ADAMS, SUITE 1200  
 DETROIT, MICHIGAN 48226  
 DAVE ROOT  
 PHONE NO. (313) 962-4442



BALTIMORE AVE. 60 FT. WD.

THIRD AVE. 60 FT. WD.

SECOND BLVD. 150 FT. WD.



AMSTERDAM ST. 50 FT. WD.



- PUBLIC ACCESS EASEMENT



- REQUEST ENCROACHMENT

(FOR OFFICE USE ONLY)

CARTO 31 E

B					
A					
DESCRIPTION	DRWN	CHKD	APPD	DATE	
REVISIONS					
DRAWN BY	SA	CHECKED	KSM		
DATE	05-07-19	APPROVED			

-REQUEST ENCROACHMENT  
 172.1 FEET ALONG SECOND BLVD.  
 -REQUEST A PUBLIC ACCESS EASEMENT  
 334.0 FEET ALONG AMSTERDAM ST.

<b>CITY OF DETROIT</b> CITY ENGINEERING DIVISION SURVEY BUREAU	
JOB NO.	01-01
DRWG. NO.	X 722