

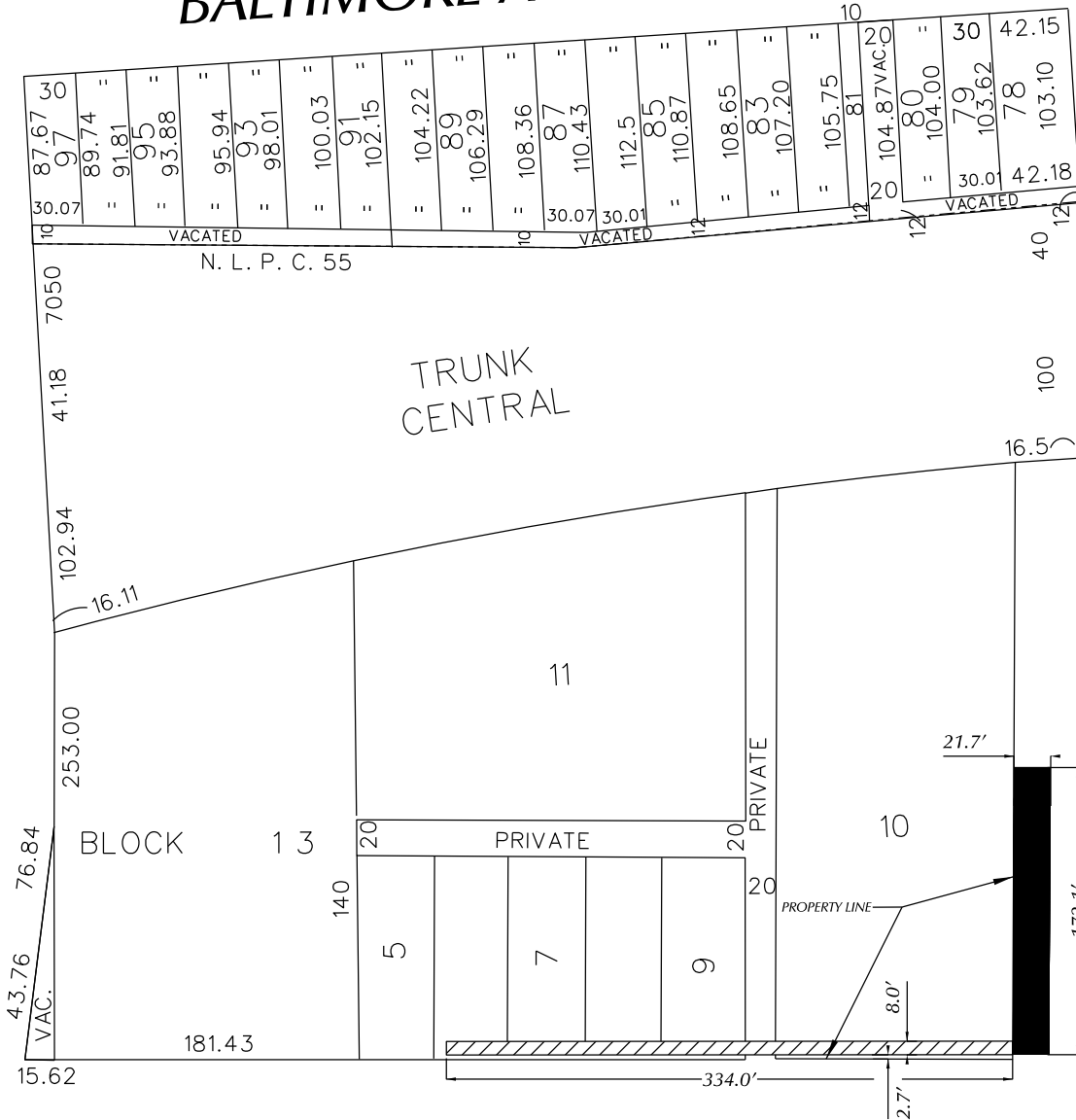
PETITION NO. 722
 GIFFELS WEBSTER
 28 W. ADAMS, SUITE 1200
 DETROIT, MICHIGAN 48226
 DAVE ROOT
 PHONE NO. (313) 962-4442



BALTIMORE AVE. 60 FT. WD.

THIRD AVE. 60 FT. WD.

SECOND BLVD. 150 FT. WD.



AMSTERDAM ST. 50 FT. WD.



- PUBLIC ACCESS EASEMENT



- REQUEST ENCROACHMENT

(FOR OFFICE USE ONLY)

CARTO 31 E

B					
A					
DESCRIPTION	DRWN	CHKD	APPD	DATE	
REVISIONS					
DRAWN BY	SA	CHECKED	KSM		
DATE	05-07-19	APPROVED			

-REQUEST ENCROACHMENT
 172.1 FEET ALONG SECOND BLVD.
 -REQUEST A PUBLIC ACCESS EASEMENT
 334.0 FEET ALONG AMSTERDAM ST.

CITY OF DETROIT
 CITY ENGINEERING DIVISION
 SURVEY BUREAU

JOB NO. 01-01
 DRWG. NO. X 722