



City of Detroit
Inter-Departmental Communication

TO: Richard Doherty, City Engineer
City Engineering/Department of Public Works

FROM: Debra Singleton, Engineer
Detroit Water and Sewerage Department

DATE: April 16, 2020

RE: Petition #1149
Request for Conversion to Easement Of The North/West Section Of The
Public Alley In the Block Bound By Gartner, Springwells, Navy And Central

The above petition received by this office has been reviewed. With regard to DWSD's interests, our comments are as follows, our records indicate that there is a sewer in the alley. DWSD has no objections to the conversion to easement provided that the attached provisions for conversion to easement are followed.

If you have any questions, please call me at (313) 267-8309 or Mohammed Fa Siddique at (313)-964-9245.

Sincerely,

Debra Singleton
Engineer
Permits Section

DS/MS/gl
Attachments

CC: Mohamad Farhat, CSF

City of Detroit
**City Engineering Division, Department of Public Works
Survey Bureau**

NOTICE OF PROPOSED CHANGE IN PROPERTY

Date: 11/26/2019

Petition: x1149

- | | |
|--|--|
| <input type="checkbox"/> AT&T Telecommunication | <input type="checkbox"/> Berm Use |
| <input type="checkbox"/> Comcast Television (CATV) | <input checked="" type="checkbox"/> Conversion to Easement |
| <input type="checkbox"/> Detroit Edison (DTE) | <input type="checkbox"/> Dedication |
| <input type="checkbox"/> Fire Department | <input type="checkbox"/> Encroachment |
| <input type="checkbox"/> Great Lakes Water Authority | <input type="checkbox"/> Outright Vacation |
| <input type="checkbox"/> Land Bank Authority | <input type="checkbox"/> Temporary Closing |
| <input type="checkbox"/> Michcon (DTE) | |
| <input type="checkbox"/> Planning & Development Department | |
| <input type="checkbox"/> Public Lighting Authority | |
| <input type="checkbox"/> Public Lighting Department | |
| <input type="checkbox"/> Police Department | |
| <input type="checkbox"/> Solid Waste Division, DPW | |
| <input type="checkbox"/> Street Design Bureau, DPW | |
| <input type="checkbox"/> Street Maintenance Division, DPW | |
| <input type="checkbox"/> Traffic Engineering Division, DPW | |
| <input type="checkbox"/> Water and Sewerage Department | |
| <input type="checkbox"/> _____ | |

A petition drawing is attached. Property shown on the attached print is proposed to be changed as indicated. Kindly report (using the back of this sheet) the nature of your services, if any affected by the proposed change and the estimated costs of removing and rerouting such services (if necessary).

Please return one copy to City Engineering Division, DPW within two weeks of the submittal date. Retain one copy and print for you file.

Ron Brundidge, Director, Department of Public Works

By: Richard Doherty, CED DPW
City Engineer

**TO: City Engineering Division, DPW
2 Woodward Ave., Suite 642
Detroit, Michigan 48226-3462
Survey Bureau: 313-224-3970**

Petition: x1149

The proposed change in property (referred to on the other side of this sheet) would affect our services as follows:

- Not Involved

- Involved; but asking you to hold action on this petition until further notice.

- Involved; but no objections to the property change.

- Involved; objection to the property change.

- Involved; but no objections to the property change...provided as easement of the full width of the public right-of-way (street, alley or other public place) is reserved.

- Involved; the nature of our services and the estimated costs of removing and/or rerouting such services are:

(Utility or City Department)

By

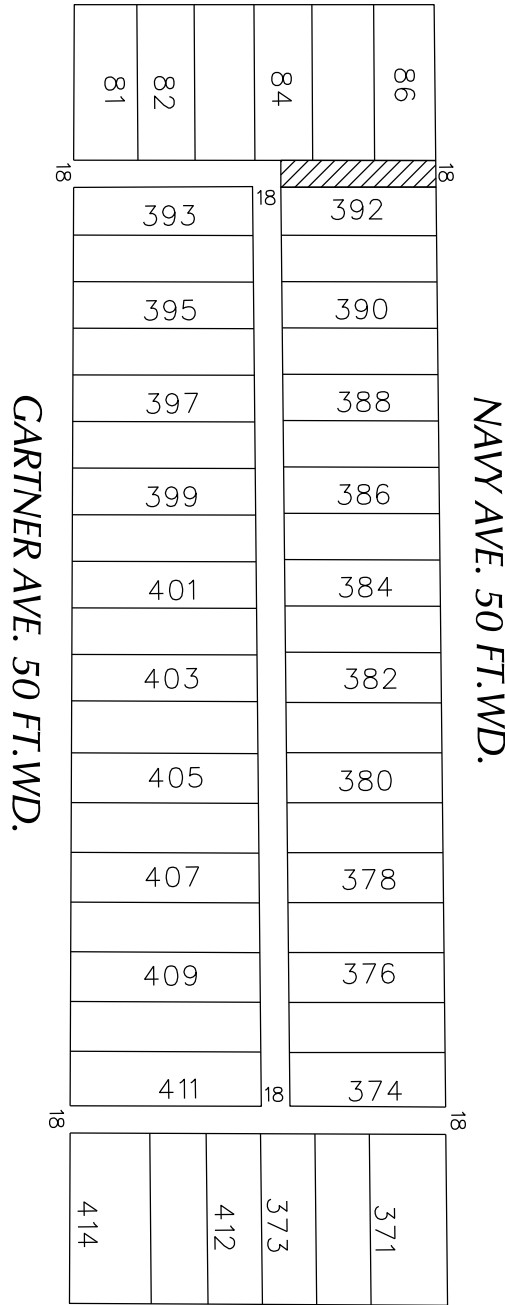
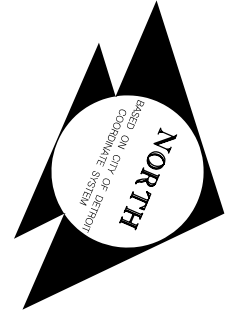
Title

Date

Area code – Telephone number

PETITION NO. 1149
 JUAN ROMO
 1930 SPRINGWELLS ST
 DETROIT, MICHIGAN 48209
 PHONE NO. (313) 415-2703

SPRINGWELLS AVE.
 66 FT. WD.



CENTRAL AVE.
 60 FT. WD.



- CONVERSION TO EASEMENT

(FOR OFFICE USE ONLY)

CARTO 2 A

B					
A					
DESCRIPTION	DRWN	CHKD	APPD	DATE	
REVISIONS					
DRAWN BY	SA		CHECKED	KSM	
DATE	11-25-19		APPROVED		

CONVERSION TO EASEMENT
 THE NORTH/WEST SECTION OF PUBLIC ALLEY,
 18 FT. WD. IN THE BLOCK BOUND BY
 GARTNER AVE., SPRINGWELLS AVE. ,
 NAVY AVE. AND CENTRAL AVE.

CITY OF DETROIT CITY ENGINEERING DIVISION SURVEY BUREAU	
JOB NO.	01-01
DRWG. NO.	X 1149

PROVISIONS FOR CONVERSION TO EASEMENT

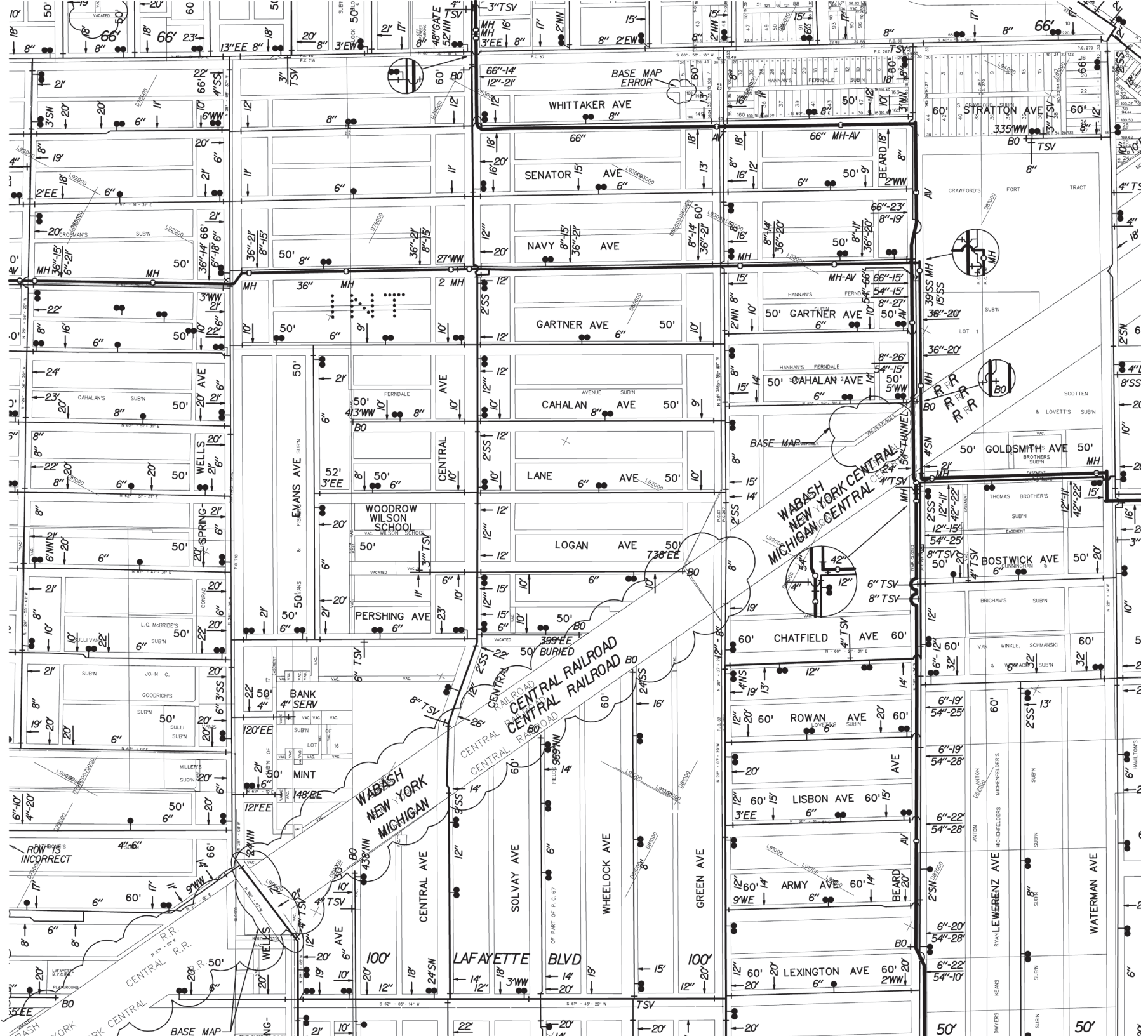
1. An easement, the full width of the existing right of way, is reserved for the Detroit Water and Sewerage Department for the purpose of installing, maintaining, repairing, removing, or replacing any sewers, water mains, fire hydrants and appurtenances, with the right of ingress and egress at any time to, and over said easement for the purpose above set forth. Any proposed fencing across the easement must have a gate installed to permit access for DWSD forces. The gate shall remain unlocked 24 hours a day, unless a guard is stationed near the gate to allow the Detroit Water and Sewerage Department ingress and egress at any time. The minimum dimensions of the gate or gates shall provide 15 foot vertical and 13 foot horizontal clearances for freedom of D.W.S.D. equipment movement.

Free and easy access to the sewers, water mains, fire hydrants and manholes and structures within the easement is required for Detroit Water and Sewerage Department equipment, including the use of backhoes, bull dozers, cranes or pipe trucks, and other heavy construction equipment, as necessary for the alteration or repair of the sewer or water main facilities.

The Detroit Water and Sewerage Department retains the right to install suitable permanent main location guide posts over its water mains at reasonable intervals and at points of deflection.

2. Said owners of the adjoining property, for themselves, their heirs and assigns, agree that no building or structure of any nature whatsoever, including fences, porches, patios, balconies, etc., shall be built upon or over said easement, or that no grade changes or storage of materials shall be made within said easement without prior written approval and agreement with the Detroit Water and Sewerage Department.
3. If at any time in the future, the owners of any lots abutting on said conversion to easement shall request the removal and/or relocation of the aforementioned utilities in said easement, such owners shall pay all costs incident to such removal and/or relocation. It is further provided that if sewers, water mains, and/or appurtenances in said easement shall break or be damaged as a result of any action on the part of the owner, or assigns, then in such event, the owner or assigns shall be liable for all costs incident to the repair of such broken or damaged sewers and water mains, and shall also be liable for all claims for damages resulting from his action.

These provisions shall be made part of the City Council's Vacating Resolution.
04/08/13



WHITTAKER AVE

SENATOR AVE

NAVY AVE

GARTNER AVE

CAHALAN AVE

LANE AVE

LOGAN AVE

PERSHING AVE

CENTRAL AVE

SOLVAY AVE

WHEELLOCK AVE

GREEN AVE

LAFAYETTE BLVD

LEXINGTON AVE

WATERMAN AVE

WABASH
NEW YORK CENTRAL
MICHIGAN CENTRAL

CENTRAL RAILROAD

CENTRAL RAILROAD

CENTRAL RAILROAD

CENTRAL RAILROAD

CENTRAL RAILROAD

CENTRAL RAILROAD

CENTRAL RAILROAD

CENTRAL RAILROAD

CENTRAL RAILROAD

CENTRAL RAILROAD

CENTRAL RAILROAD

CENTRAL RAILROAD

CENTRAL RAILROAD

BASE MAP ERROR

BASE MAP

BASE MAP

BASE MAP

BASE MAP

BASE MAP

BASE MAP

BASE MAP

BASE MAP

BASE MAP

BASE MAP

BASE MAP

BASE MAP

BASE MAP

BASE MAP

BASE MAP

BASE MAP

BASE MAP

BASE MAP

BASE MAP

BASE MAP

ROW'S INCORRECT

ROW'S INCORRECT

ROW'S INCORRECT

ROW'S INCORRECT

ROW'S INCORRECT

ROW'S INCORRECT

ROW'S INCORRECT

ROW'S INCORRECT

ROW'S INCORRECT

ROW'S INCORRECT

ROW'S INCORRECT

ROW'S INCORRECT

ROW'S INCORRECT

ROW'S INCORRECT

ROW'S INCORRECT

ROW'S INCORRECT

ROW'S INCORRECT

ROW'S INCORRECT

ROW'S INCORRECT

ROW'S INCORRECT

ROW'S INCORRECT

ROW'S INCORRECT

ROW'S INCORRECT

ROW'S INCORRECT

ROW'S INCORRECT

ROW'S INCORRECT

ROW'S INCORRECT

ROW'S INCORRECT

ROW'S INCORRECT

ROW'S INCORRECT

ROW'S INCORRECT

ROW'S INCORRECT

ROW'S INCORRECT

ROW'S INCORRECT

ROW'S INCORRECT

ROW'S INCORRECT

ROW'S INCORRECT

ROW'S INCORRECT

ROW'S INCORRECT

ROW'S INCORRECT

ROW'S INCORRECT

ROW'S INCORRECT

ROW'S INCORRECT

ROW'S INCORRECT

ROW'S INCORRECT

ROW'S INCORRECT

ROW'S INCORRECT

ROW'S INCORRECT

ROW'S INCORRECT

ROW'S INCORRECT

ROW'S INCORRECT

ROW'S INCORRECT

ROW'S INCORRECT

ROW'S INCORRECT

ROW'S INCORRECT

ROW'S INCORRECT

ROW'S INCORRECT

ROW'S INCORRECT

ROW'S INCORRECT

ROW'S INCORRECT

ROW'S INCORRECT

ROW'S INCORRECT

ROW'S INCORRECT

ROW'S INCORRECT

ROW'S INCORRECT

ROW'S INCORRECT

ROW'S INCORRECT

ROW'S INCORRECT

ROW'S INCORRECT

ROW'S INCORRECT

ROW'S INCORRECT

ROW'S INCORRECT

ROW'S INCORRECT

ROW'S INCORRECT

ROW'S INCORRECT

ROW'S INCORRECT

ROW'S INCORRECT

ROW'S INCORRECT

ROW'S INCORRECT

ROW'S INCORRECT

ROW'S INCORRECT

ROW'S INCORRECT

ROW'S INCORRECT

ROW'S INCORRECT

ROW'S INCORRECT

ROW'S INCORRECT

ROW'S INCORRECT

ROW'S INCORRECT

ROW'S INCORRECT

ROW'S INCORRECT

ROW'S INCORRECT

ROW'S INCORRECT

ROW'S INCORRECT

ROW'S INCORRECT

ROW'S INCORRECT

ROW'S INCORRECT

ROW'S INCORRECT

ROW'S INCORRECT

ROW'S INCORRECT

ROW'S INCORRECT

ROW'S INCORRECT

ROW'S INCORRECT

ROW'S INCORRECT

ROW'S INCORRECT

ROW'S INCORRECT

ROW'S INCORRECT

ROW'S INCORRECT

ROW'S INCORRECT

ROW'S INCORRECT

ROW'S INCORRECT

ROW'S INCORRECT

ROW'S INCORRECT

ROW'S INCORRECT

ROW'S INCORRECT

ROW'S INCORRECT

ROW'S INCORRECT

ROW'S INCORRECT

ROW'S INCORRECT

ROW'S INCORRECT

ROW'S INCORRECT

ROW'S INCORRECT

ROW'S INCORRECT

ROW'S INCORRECT

ROW'S INCORRECT

ROW'S INCORRECT

ROW'S INCORRECT

ROW'S INCORRECT

ROW'S INCORRECT

ROW'S INCORRECT

ROW'S INCORRECT

ROW'S INCORRECT

ROW'S INCORRECT

ROW'S INCORRECT

ROW'S INCORRECT

ROW'S INCORRECT

ROW'S INCORRECT

ROW'S INCORRECT

ROW'S INCORRECT

ROW'S INCORRECT

ROW'S INCORRECT

ROW'S INCORRECT

ROW'S INCORRECT

ROW'S INCORRECT

ROW'S INCORRECT

ROW'S INCORRECT

ROW'S INCORRECT

ROW'S INCORRECT

ROW'S INCORRECT

ROW'S INCORRECT

ROW'S INCORRECT

ROW'S INCORRECT

ROW'S INCORRECT

ROW'S INCORRECT

ROW'S INCORRECT

ROW'S INCORRECT

ROW'S INCORRECT

ROW'S INCORRECT

ROW'S INCORRECT

ROW'S INCORRECT

ROW'S INCORRECT

ROW'S INCORRECT

ROW'S INCORRECT

ROW'S INCORRECT

ROW'S INCORRECT

ROW'S INCORRECT

ROW'S INCORRECT

ROW'S INCORRECT

ROW'S INCORRECT

ROW'S INCORRECT

ROW'S INCORRECT

ROW'S INCORRECT

ROW'S INCORRECT

ROW'S INCORRECT

ROW'S INCORRECT

ROW'S INCORRECT

ROW'S INCORRECT

ROW'S INCORRECT

ROW'S INCORRECT

ROW'S INCORRECT

ROW'S INCORRECT

ROW'S INCORRECT

ROW'S INCORRECT

ROW'S INCORRECT

ROW'S INCORRECT

ROW'S INCORRECT

ROW'S INCORRECT

ROW'S INCORRECT

ROW'S INCORRECT

ROW'S INCORRECT

ROW'S INCORRECT

ROW'S INCORRECT

ROW'S INCORRECT

ROW'S INCORRECT

ROW'S INCORRECT

ROW'S INCORRECT

ROW'S INCORRECT

ROW'S INCORRECT

ROW'S INCORRECT

ROW'S INCORRECT

ROW'S INCORRECT

ROW'S INCORRECT

ROW'S INCORRECT

ROW'S INCORRECT

ROW'S INCORRECT

ROW'S INCORRECT

ROW'S INCORRECT

ROW'S INCORRECT

ROW'S INCORRECT

ROW'S INCORRECT

ROW'S INCORRECT

ROW'S INCORRECT

ROW'S INCORRECT

ROW'S INCORRECT

ROW'S INCORRECT

ROW'S INCORRECT

ROW'S INCORRECT

ROW'S INCORRECT

ROW'S INCORRECT

ROW'S INCORRECT

ROW'S INCORRECT

ROW'S INCORRECT

ROW'S INCORRECT

ROW'S INCORRECT

ROW'S INCORRECT

ROW'S INCORRECT

ROW'S INCORRECT

ROW'S INCORRECT

ROW'S INCORRECT

ROW'S INCORRECT

ROW'S INCORRECT

ROW'S INCORRECT

ROW'S INCORRECT

ROW'S INCORRECT

ROW'S INCORRECT

ROW'S INCORRECT

ROW'S INCORRECT

ROW'S INCORRECT

ROW'S INCORRECT

ROW'S INCORRECT

ROW'S INCORRECT

ROW'S INCORRECT

ROW'S INCORRECT

ROW'S INCORRECT

ROW'S INCORRECT

ROW'S INCORRECT

ROW'S INCORRECT

ROW'S INCORRECT

ROW'S INCORRECT

ROW'S INCORRECT

ROW'S INCORRECT

ROW'S INCORRECT

ROW'S INCORRECT

ROW'S INCORRECT

ROW'S INCORRECT

ROW'S INCORRECT

ROW'S INCORRECT

ROW'S INCORRECT

ROW'S INCORRECT

ROW'S INCORRECT

ROW'S INCORRECT

ROW'S INCORRECT

ROW'S INCORRECT

ROW'S INCORRECT

ROW'S INCORRECT

ROW'S INCORRECT

ROW'S INCORRECT

ROW'S INCORRECT

ROW'S INCORRECT

ROW'S INCORRECT

ROW'S INCORRECT

ROW'S INCORRECT

