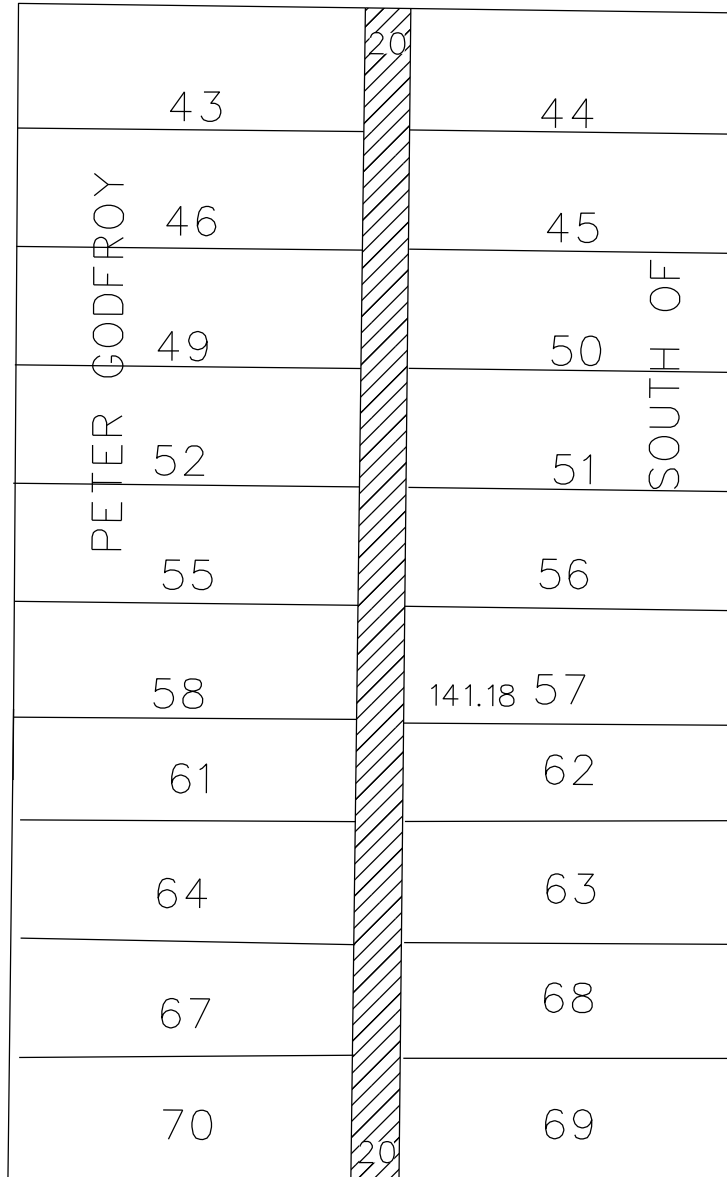


PETITION NO. 1103
 SCOTT D. LOWELL
 C/O GIFFELS WEBSTER
 28 W. ADAMS, SUITE 1200
 DETROIT, MICHIGAN 48226
 MICHAEL MARKS
 PHONE NO. 313 962-4442



DALZELLE ST. 50 FT.WD.

FOURTEENTH AVE. 80 FT.WD.



WABASH AVE. 65 FT.WD.

MARANTETTE ST. 60 FT.WD.



- CONVERSION TO EASEMENT

(FOR OFFICE USE ONLY)

CARTO 18 A, 19 F

B						CONVERSION TO EASEMENT THE SOUTH/NORTH PUBLIC ALLEY, 20 FT. WD. IN THE BLOCK BOUND BY FOURTEENTH AVE., DALZELLE ST., WABASH AVE. AND MARANTETTE ST.	CITY OF DETROIT CITY ENGINEERING DIVISION SURVEY BUREAU	
A								JOB NO. 01-01
DESCRIPTION		DRWN	CHKD	APPD	DATE			DRWG. NO. X 1103
DRAWN BY SA		CHECKED KSM		DATE 10-03-19				
REVISIONS		APPROVED						