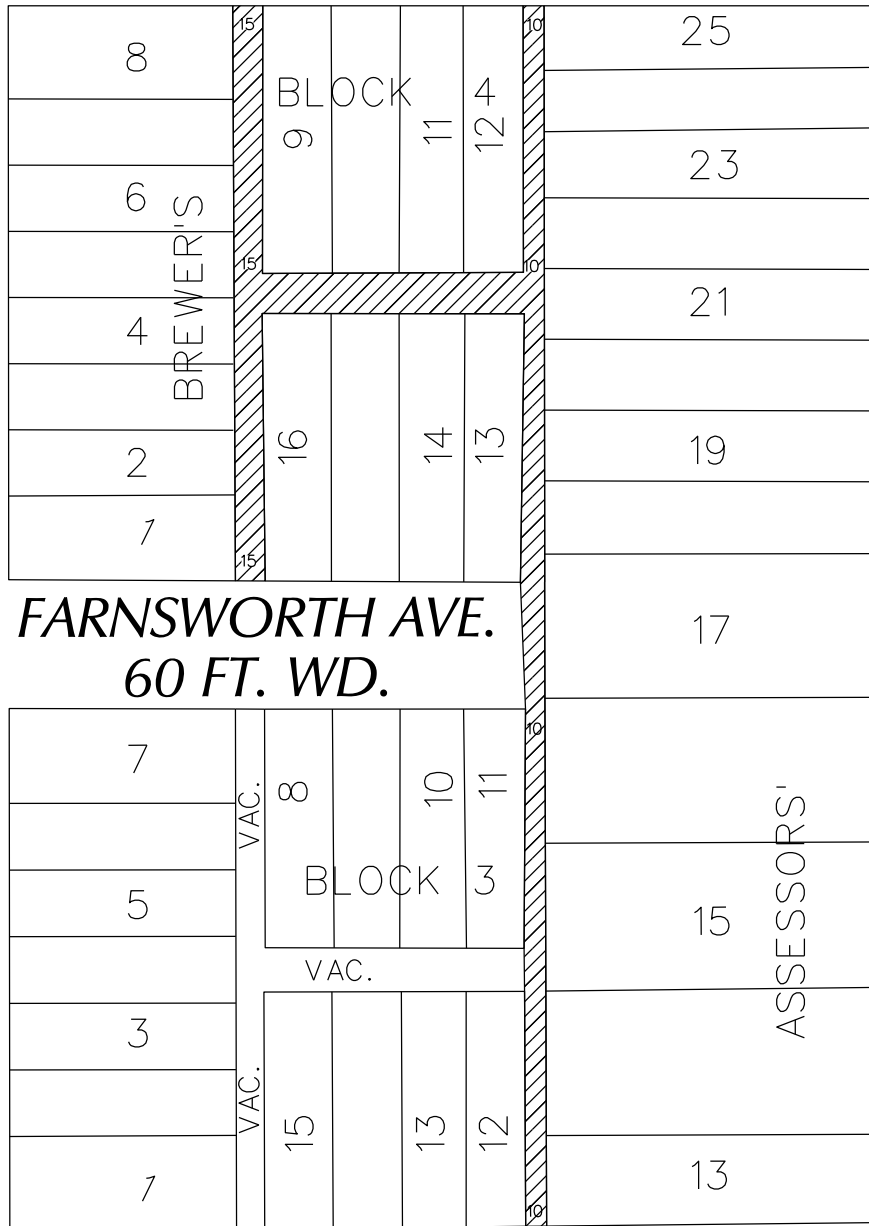


PETITION NO. 1100
 THE EL-BETH-EL DEL MIN,
 7040 RARNSWORTH AVE
 DETROIT, MICHIGAN 48211
 PHONE NO. (313) 897-6543



FREDERICK AVE. 60 FT. WD.

HELEN AVE. 60 FT. WD.



GRAND BOULEVARD E. 150 FT. WD.

FARNSWORTH AVE. 60 FT. WD.

THEODORE AVE. 50 FT. WD.



- CONVERSION TO EASEMENT

(FOR OFFICE USE ONLY)

CARTO 48 C

B					
A					
DESCRIPTION		DRWN	CHKD	APPD	DATE
REVISIONS					
DRAWN BY	SA	CHECKED		KSM	
DATE	10-03-19	APPROVED			

CONVERSION TO EASEMENT
 PUBLIC ALLEYS, IN THE AREA BOUND BY
 HELEN AVE., FREDERICK AVE.,
 E. GRAND BOULEVARD
 AND THEODORE AVE.

CITY OF DETROIT
 CITY ENGINEERING DIVISION
 SURVEY BUREAU

JOB NO. 01-01

DRWG. NO. X 1100