

TO: City Engineering Division, DPW
2 Woodward Ave., Suite 642
Detroit, MI 48226-3462
Survey Bureau: 313-224-3970

Petition No.1078 RA

The proposed change in property (referred to above) would affect our services as follows:

- () Not Involved.
- () Involved; but asking you to hold action on this petition until further notice.
- () Involved; the nature of our services, and the estimated costs of removing and/or rerouting such services are:
- (X) Involved; have no objection to request for the conversion to easement part of public alley, 20 ft. wide behind property located at 30 E. Philadelphia in the block bound by Euclid Ave., Woodward Ave., Philadelphia E. Ave. and John R. St. as shown on drawing no. X1078 Revision A dated 10/07/19 provided that 100% signatures of abutting property owners are secured.

Traffic Engineering Division - DPW
(Utility or City Department)

Ashok Patel 
By

City Traffic Engineer
Title

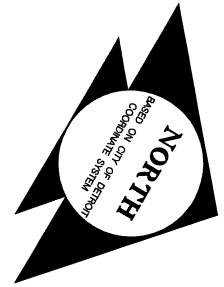
October 15, 2019
Date

313 224-1610
Area code-Telephone number

Aa/aa

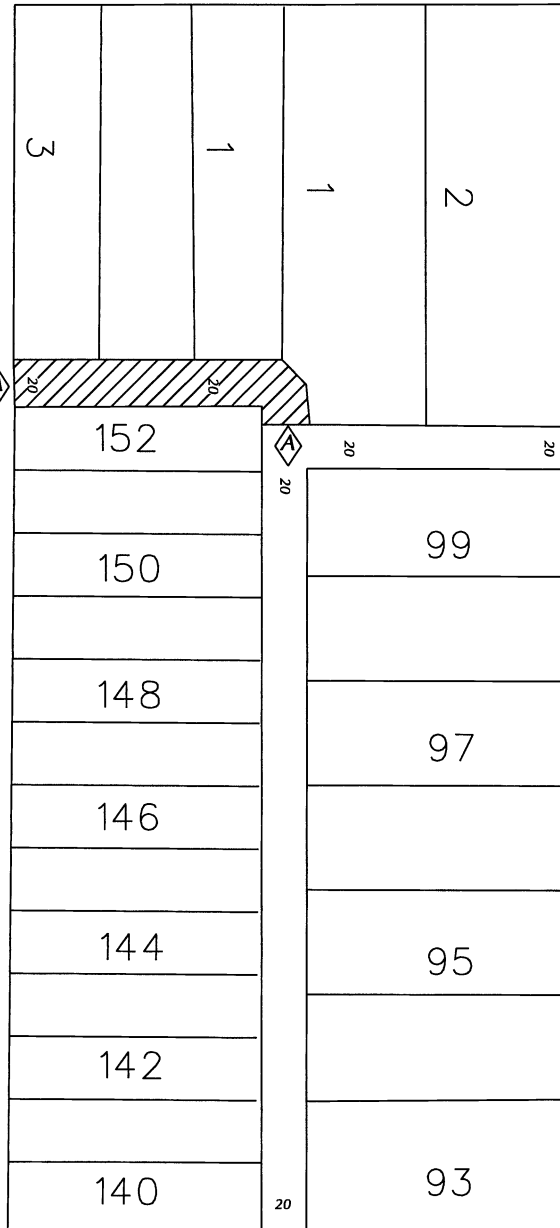
PETITION NO. 1078
 JUBWAY INC.
 3 PARKLANE BLVD. SUITE 1010
 DEARBORN, MICHIGAN 48126
 BISHOP ALAN T. JUSTICE
 PHONE NO. (734) 341-5900

"REVISION -A"



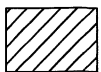
WOODWARD AVE. 100 FT.WD.

EUCLID AVE. 70 FT.WD.



PHILADELPHIA E. AVE. 60 FT.WD.

JOHN R. ST. 60 FT.WD.



- CONVERSION TO EASEMENT

(FOR OFFICE USE ONLY)

CARTO 32 F

B					
A	REVISED: EXTEND EASEMENT OUT TO EUCLID AVE., FULL WIDTH.	SA	KSM		10/11/19
	DESCRIPTION	DRWN	CHKD	APPD	DATE
REVISIONS					
DRAWN BY	SA	CHECKED	KSM		
DATE	10-07-19	APPROVED			

CONVERSION TO EASEMENT
 PART OF PUBLIC ALLEY, 20 FT. WD.
 BEHIND PROPERTY LOCATED AT
 30 E. PHILADELPHIA
 IN THE BLOCK BOUND BY
 EUCLID AVE., WOODWARD AVE.,
 PHILADELPHIA E. AVE. AND JOHN R. ST.

CITY OF DETROIT CITY ENGINEERING DIVISION SURVEY BUREAU	
JOB NO.	01-01
DRWG. NO.	X 1078