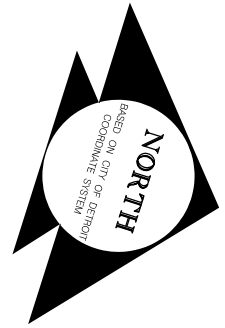
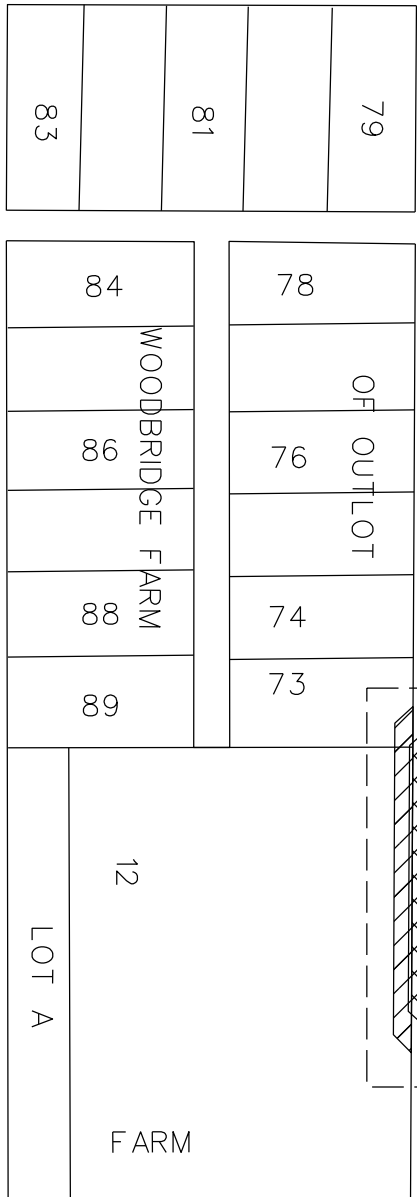


PETITION NO. 1007
 DETROIT ENTERTAINMENT, LC d/b/a "MCCH"
 C/O GIFFELS WEBSTER
 28 W. ADAMS, SUITE 1200
 DETROIT, MICHIGAN 48226
 DAVE ROOT
 PHONE NO. (313) 962-4442



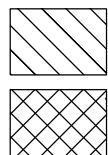
TRUMBULL AVE. 100 FT. WD.

PERRY ST. 50 FT. WD.



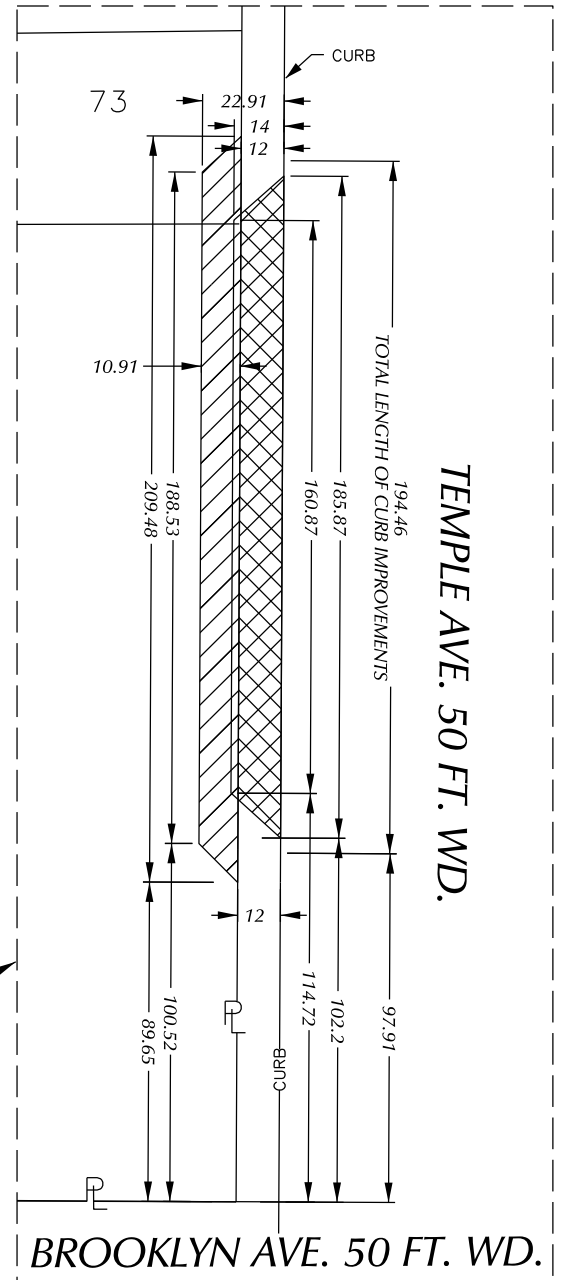
TEMPLE AVE. 50 FT. WD.

BROOKLYN AVE. 50 FT. WD.



- PUBLIC EASEMENT

- PARKING LANE



TEMPLE AVE. 50 FT. WD.

BROOKLYN AVE. 50 FT. WD.

(FOR OFFICE USE ONLY)

CARTO 29 D

REQUEST PARKING LANE
 INTO TAMPLE ST.
 TO CREATE A PEDESTRIAN EASEMENT
 FOR THE PURPOSES OF CONSTRUCTING
 A DROP OF LANE.

CITY OF DETROIT
 CITY ENGINEERING DIVISION
 SURVEY BUREAU

B					
A					
DESCRIPTION	DRWN	CHKD	APPD	DATE	
REVISIONS					
DRAWN BY	SA	CHECKED	KSM		
DATE	12-02-19	APPROVED			

JOB NO. 01-01
 DRWG. NO. X 1007