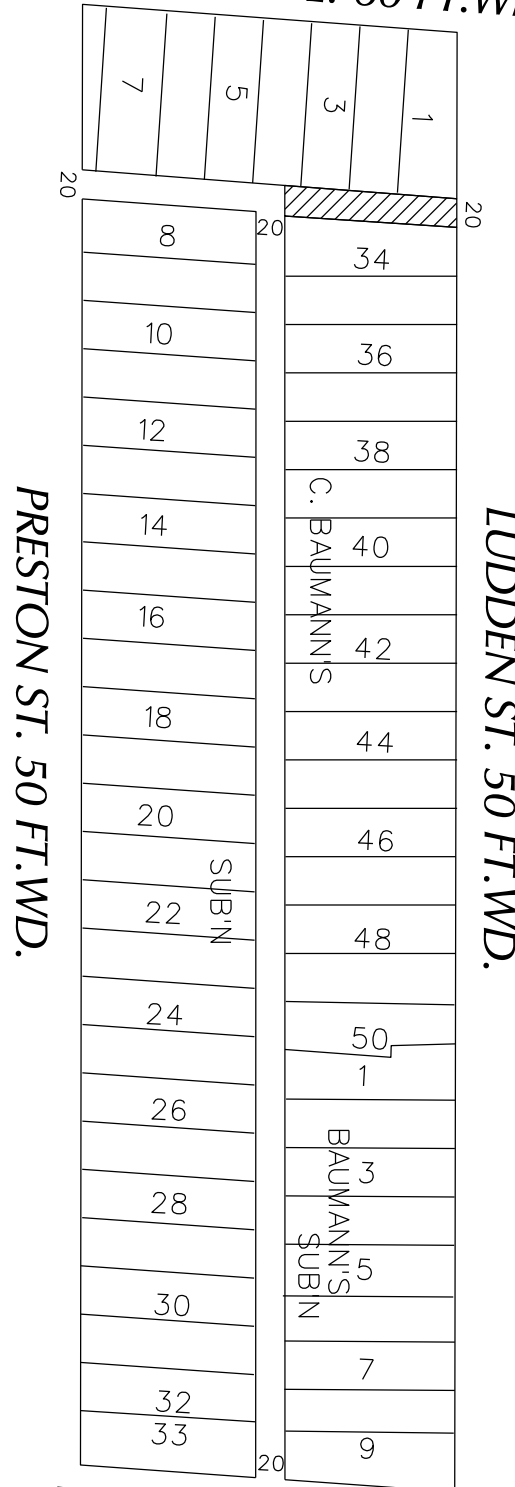


PETITION NO. 1006  
 PAT PERRY  
 3326 LUDDEN  
 DETROIT, MICHIGAN 48207  
 PHONE NO. (616)724-7943



ELMWOOD AVE. 60 FT.WD.



LUDDEN ST. 50 FT.WD.

PRESTON ST. 50 FT.WD.

ELLERY ST. 60 FT.WD.



- CONVERSION TO EASEMENT

(FOR OFFICE USE ONLY)

CARTO 39 A

B					
A					
DESCRIPTION		DRWN	CHKD	APPD	DATE
REVISIONS					
DRAWN BY	SA	CHECKED	KSM		
DATE	08-05-19	APPROVED			

CONVERSION TO EASEMENT PART OF  
 THE NORTH/SOUTH PUBLIC ALLEY, 20 FT. WD.  
 IN THE BLOCK BOUND BY  
 PRESTON ST., ELMWOOD AVE.,  
 LUDDEN ST. AND ELLERY ST.

CITY OF DETROIT CITY ENGINEERING DIVISION SURVEY BUREAU	
JOB NO.	01-01
DRWG. NO.	X 1006