



**DASHER
LAWLESS Inc.**
A Christopher Alan Company
6023 Hazeltine Avenue, Los Angeles CA 91401
818 989 1282 • 818 989 0174 f
www.dasherlawless.com



Los Angeles | Chicago | Warren
Corporate Office
408 Dane Street SE, Warren OH 44483
Los Angeles
6023 Hazeltine Avenue, Los Angeles CA 91401
818 989 1283 | 885 755 PARK
www.ausparkit.com



NO	ISSUE	DATE	BY
1	PROGRESS REVIEW	06/07/19	
2	QA / QC	06/21/19	
3	BULLETIN 05	06/26/19	
4	REVIEW	07/09/19	
5	BULLETIN 05	07/30/19	
7	ABI 1 FIELD SET	09/19/19	
8	ABI 2 REV 2	12/05/19	

Free Press Building
for
Bedrock Detroit
321 W Lafayette Blvd., Detroit, MI 48226

Typical Steel Details

PROJECT STATUS: Conceptual Design
PROJECT NO.: 2018024
SCALE: As indicated
PRINTED: 12/5/2019 6:52:02 PM
SHEET: **QS-501**

DESAI NASR
CONSULTING ENGINEERS
6765 Daly Road
West Bloomfield, MI 48322
T: 248.932.2010 • F: 248.932.3088
info@desainasr.com
DNCE Project No.: 19-1096

STRUCTURAL COLUMN TAKEOFF ESTIMATE

THESE VALUES ARE ESTIMATES ONLY AND ARE PROVIDED AS A COURTESY FOR PRELIMINARY PRICING. A PROPER MATERIAL TAKEOFF SHALL BE PROVIDED BY THE STEEL DETAILER.

Type	Count	Length	Weight (lbs)
HSS4x4x3/8	19		2798
W10x26	33		18367
W10x33	16		9123
Grand Total			30288

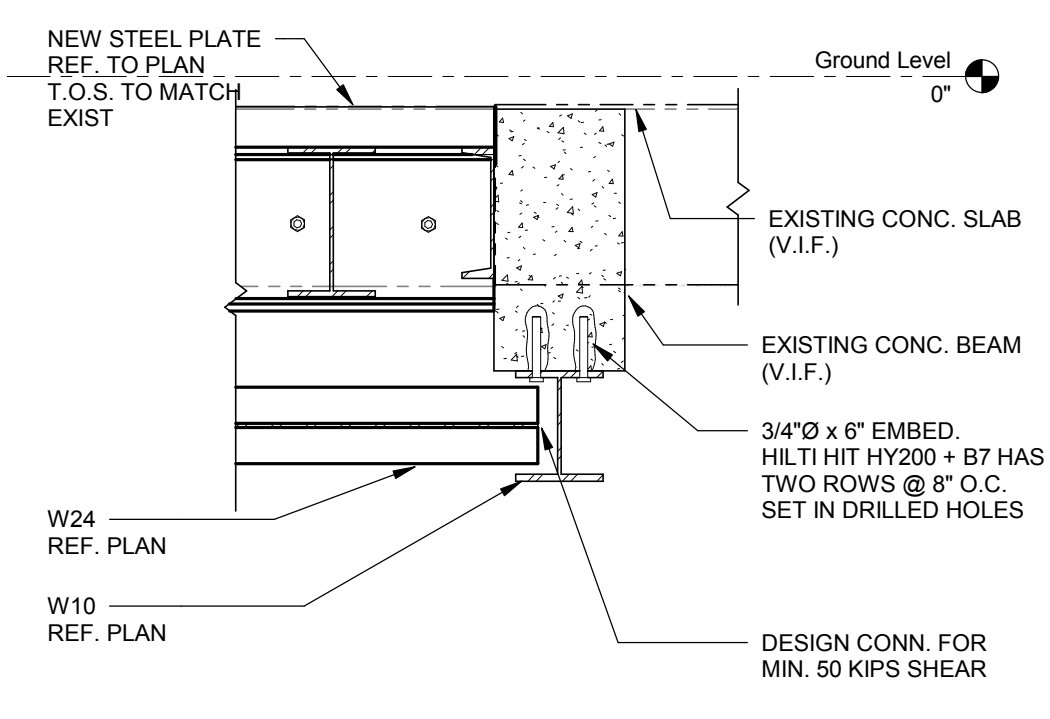
STRUCTURAL FRAMING TAKEOFF ESTIMATE

THESE VALUES ARE ESTIMATES ONLY AND ARE PROVIDED AS A COURTESY FOR PRELIMINARY PRICING. A PROPER MATERIAL TAKEOFF SHALL BE PROVIDED BY THE STEEL DETAILER.

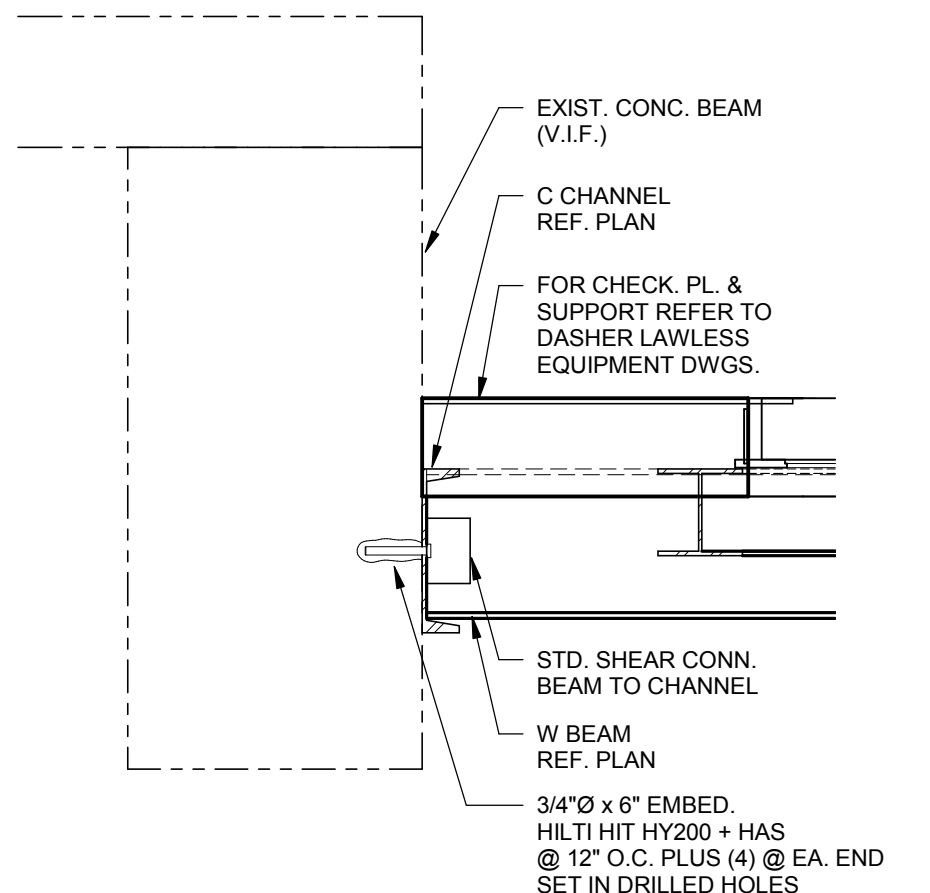
Type	Count	Length	Weight (lbs)
1'-2"x2'-4"	9		771713
2L3x2x1/4x3/8LLBB	15		848
2L3x2x5/16x3/8LLBB	3		198
2L4x3x1/4LLBB	3		236
2L4x3x1/4x3/8LLBB	9		699
2L4x3x3/8x3/8LLBB	4		568
2L4x3x5/16x3/8LLBB	28		2591
2L6x4x1/2LLBB	5		907
2L6x4x1/2x3/8LLBB	5		883
2L6x4x3/8x3/8LLBB	18		2759
2L6x4x7/16x3/8LLBB	2		438
C10x15.3	72		12643
C12x20.7	9		2150
C15x23.9	4		3987
HSS3x3x3/8	28		8559
HSS4x4x3/8	8		1342
HSS8x8x1/2	14		9276
HSS10x10x3/8 FLAT	15		7562
L3x2x3/8	4	4"	0
L4x4x3/8	6		261
WBX10	14		175
WBX13	8		576
WBX21	62		25904
WBX24	8		1304
WBX31	10		8369
WBX35	4		2965
WBX48	5		6155
WBX58	24		38596
WBX67	6		11772
W10x22	13		5293
W10x45	13		11473
W10x64	8		12216
W12x26	2	3'-10 19/128"	145
W14x43	20		9306
W14x48	8		5784
W18x35	18		10640
W21x44	9		7671
W24x55	2		2887
W24x68	6		7005
Grand Total	499		95693

MINIMUM BEAM SHEAR...

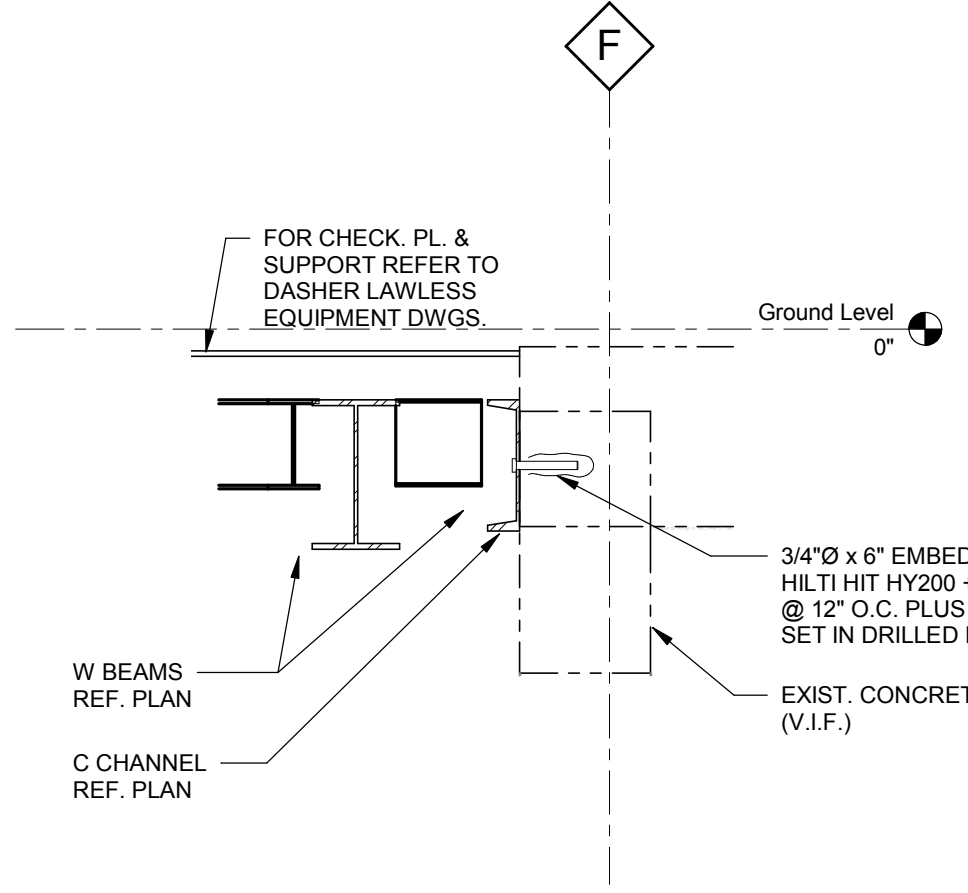
WB8	10K
W10	10K
W12	10K
W14	20K
W18	20K
W21	40K
W24	40K



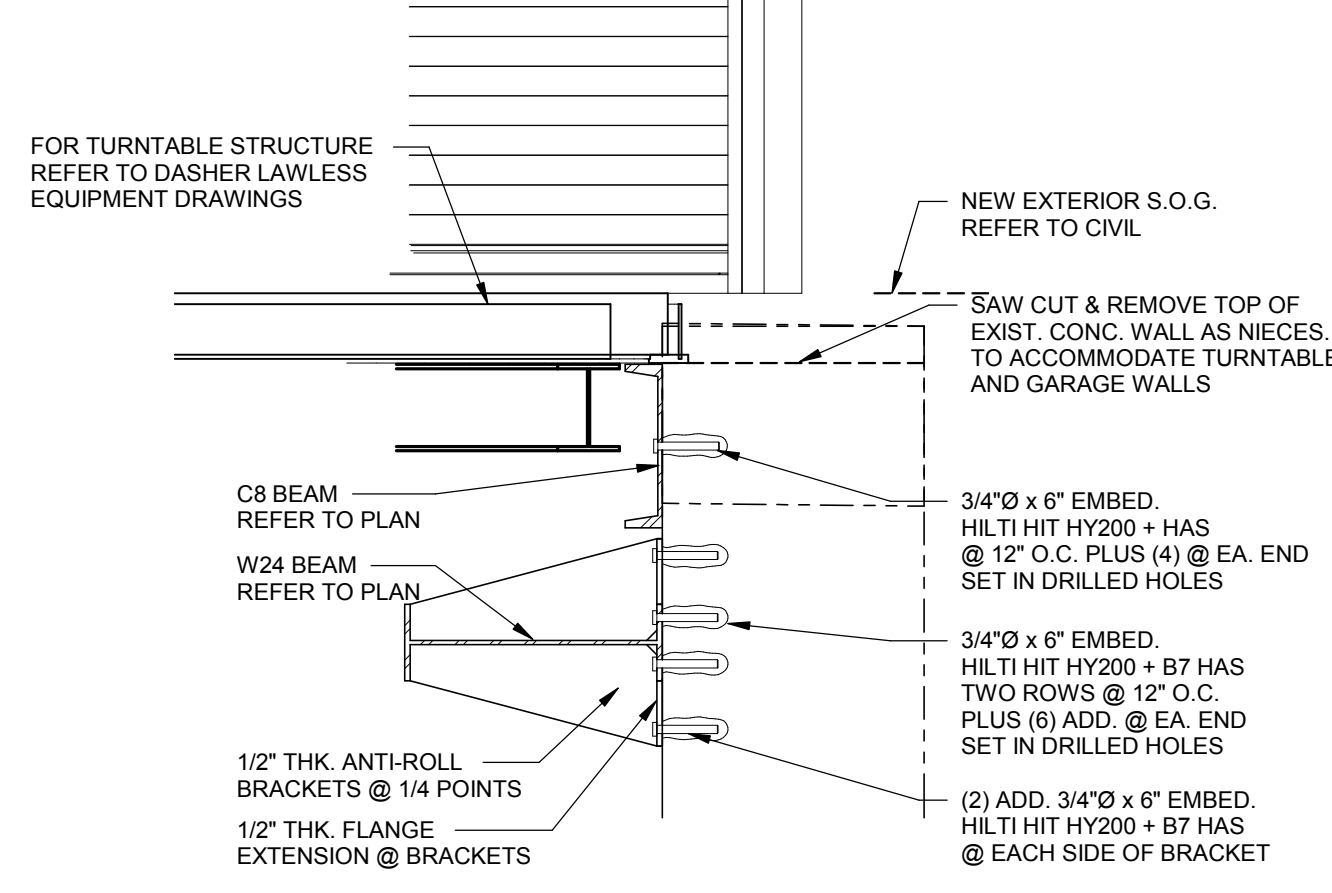
12 DETAIL
QS-501 3/4" = 1'-0"



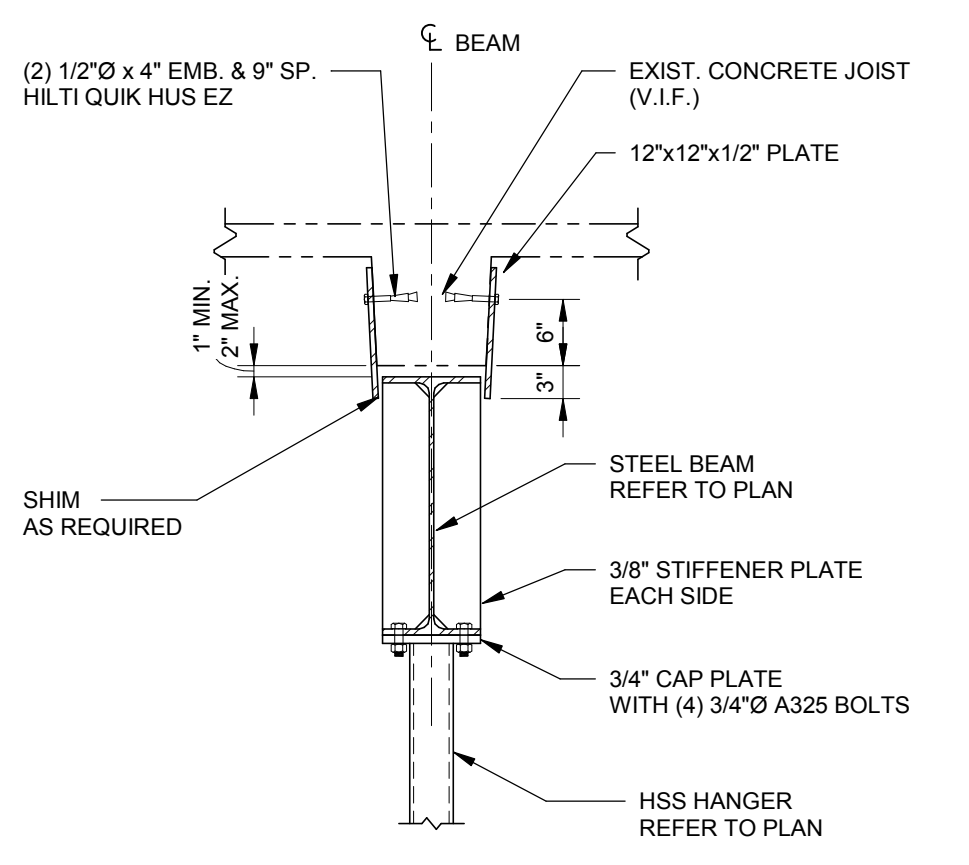
5 Section 28
QS-501 3/4" = 1'-0"



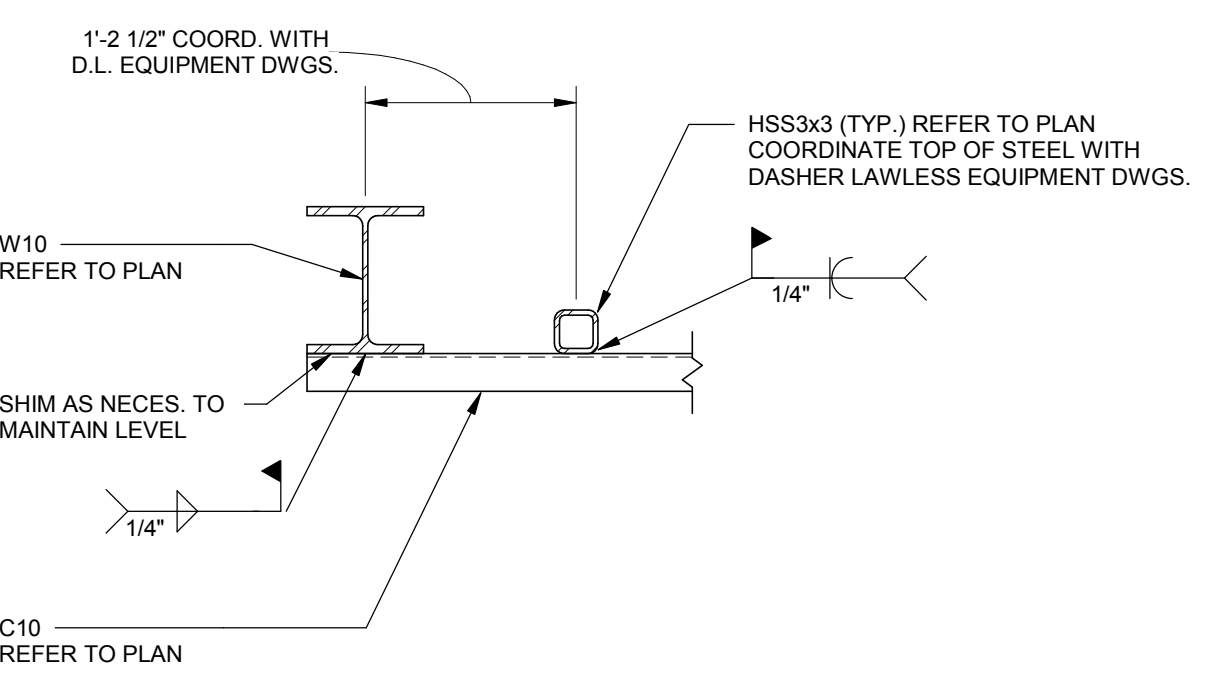
3 Section 27
QS-501 3/4" = 1'-0"



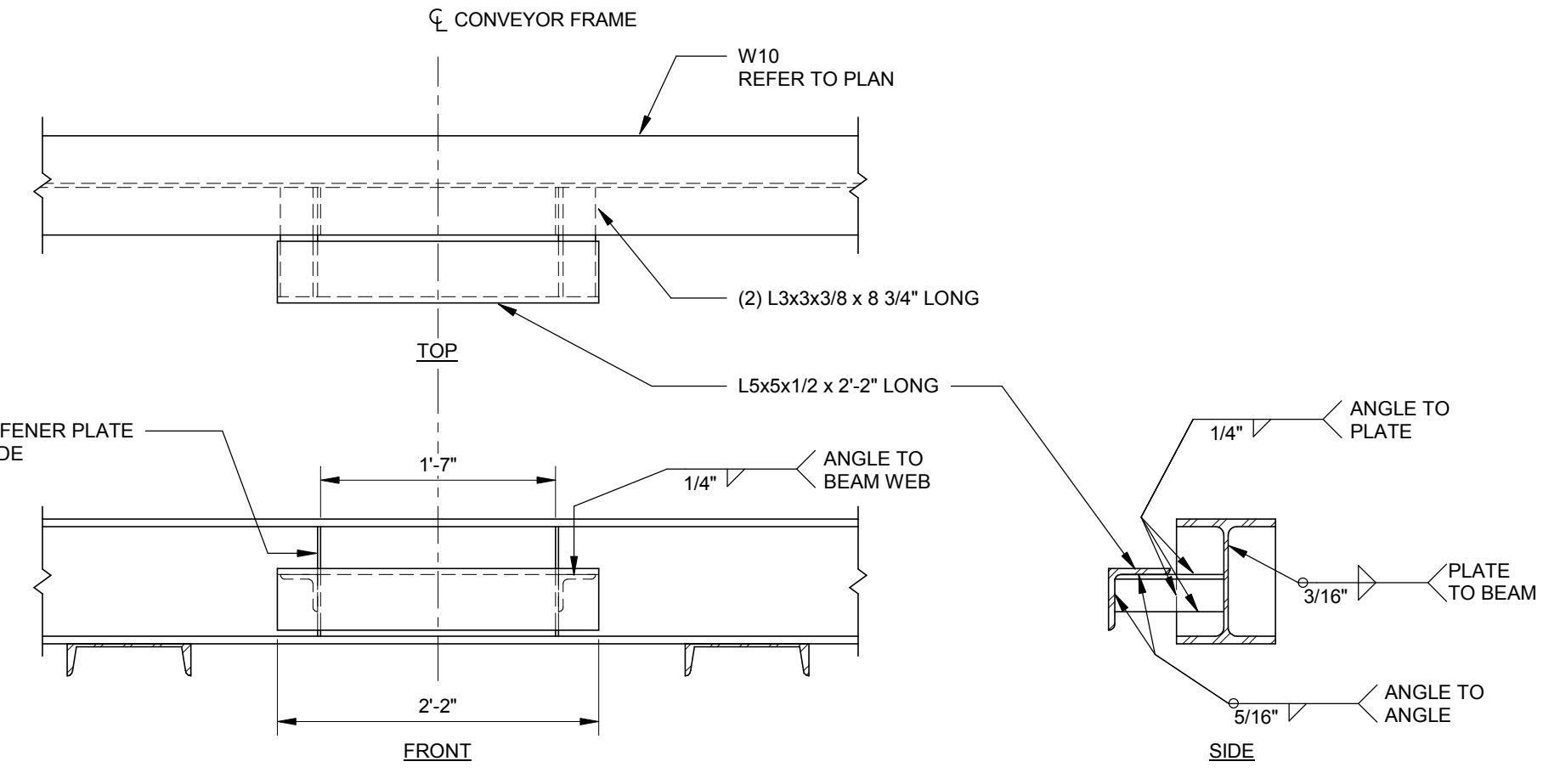
2 Section
QS-501 3/4" = 1'-0"



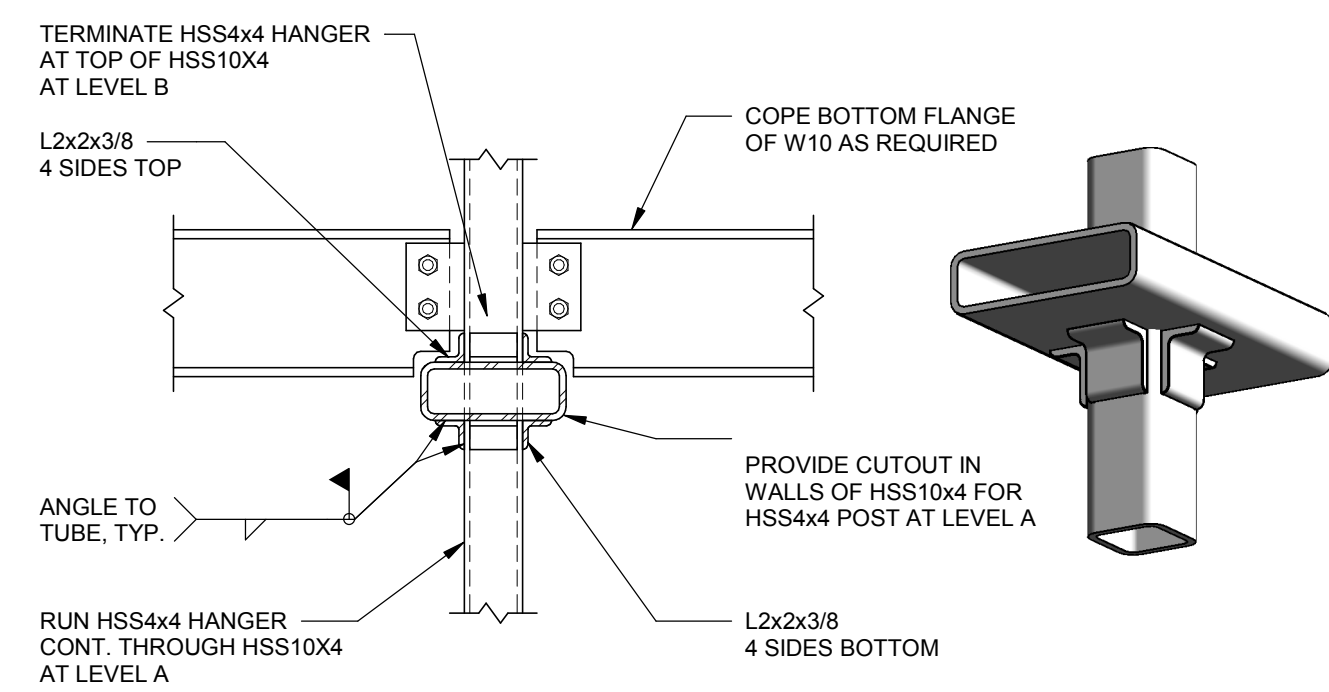
26 SECTION
QS-501 3/4" = 1'-0"



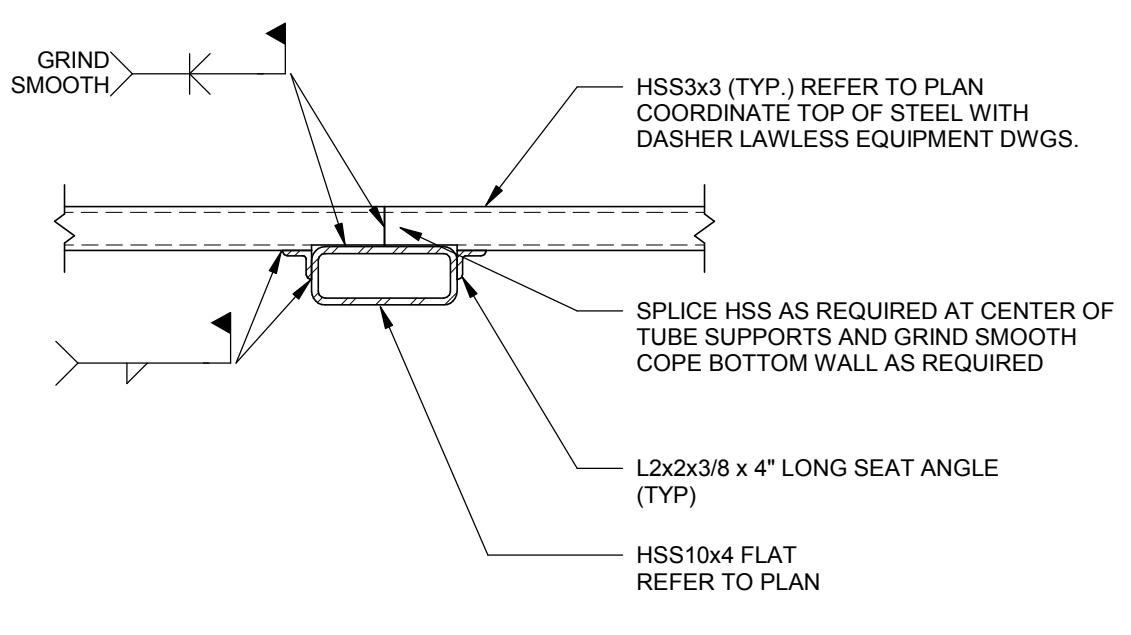
27 CONNECTION DETAIL
QS-501 1" = 1'-0"



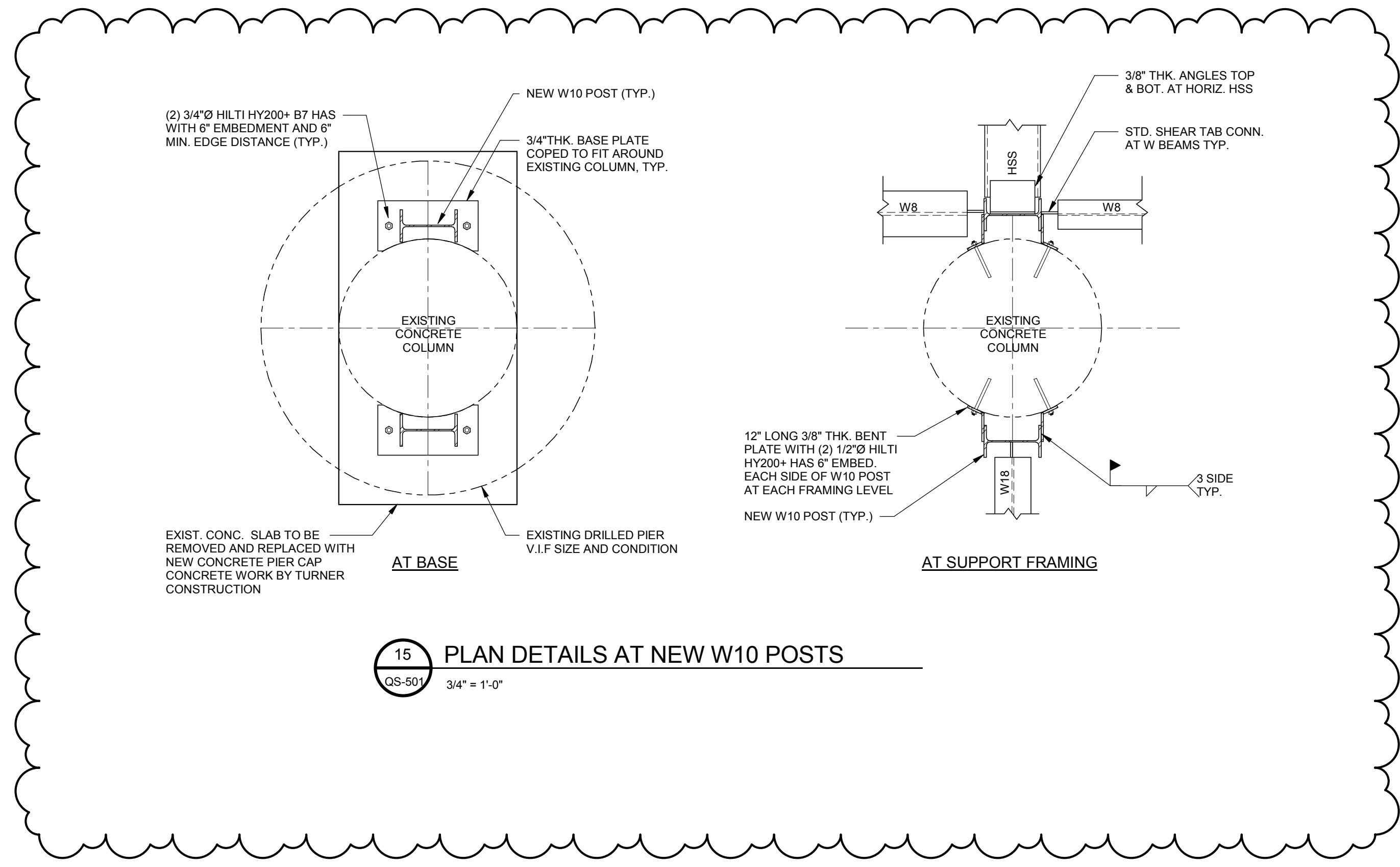
17 CONVEYOR SUPPORT DETAIL
QS-501 1" = 1'-0"



30 CONNECTION DETAIL
QS-501 1" = 1'-0"



28 CONNECTION DETAIL
QS-501 1" = 1'-0"



15 PLAN DETAILS AT NEW W10 POSTS
QS-501 3/4" = 1'-0"

DESIGNER'S NOTE: THESE DETAILS ARE FOR INFORMATION ONLY AND ARE NOT TO BE USED FOR CONSTRUCTION WITHOUT THE WRITTEN CONSENT OF DASHER LAWLESS INC.