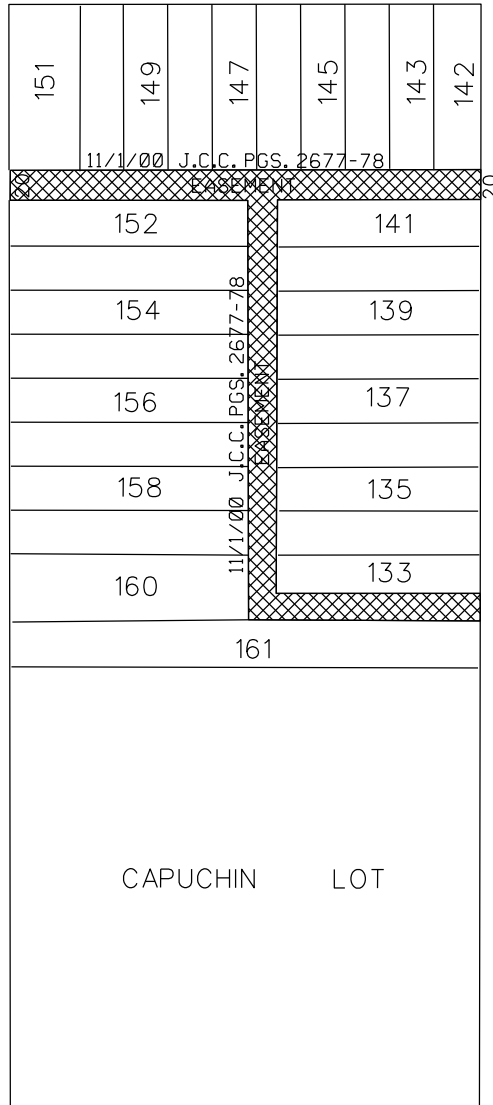


PETITION NO. 1002
 SOLANUS CASEY CENTER
 C/O OHM ADVISORS
 1145 GRISWOLD, SUITE 200
 DETROIT, MICHIGAN 48226
 PATRICK M. DROZE
 PHONE NO. (313) 481-1252

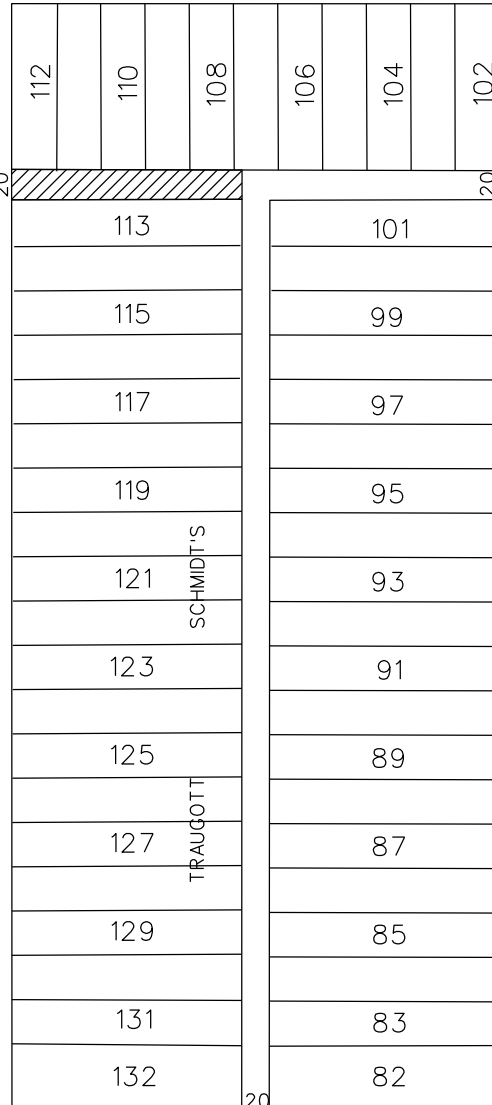


KERCHEVAL AVE. 80 FT.WD.

MT. ELLIOTT 66 FT. WD.

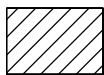


MELDRUM AVE. 60 FT.WD.



BEAUFAIT AVE. 71 FT.WD.

ST. PAUL AVE. 60 FT.WD.



- CONVERSION TO EASEMENT



- OUTRIGHT VACATION

(FOR OFFICE USE ONLY)

CARTO 47 D

B					
A					
DESCRIPTION	DRWN	CHKD	APPD	DATE	
REVISIONS					
DRAWN BY	SA	CHECKED	KSM		
DATE	09-04-19	APPROVED			

REQUEST TO OUTRIGHT VACATE ALLEYS LOCATED IN THE
 BLOCK BOUNDED BY KERCHEVAL AVE., MT. ELLIOTT,
 MELDRUM AVE. AND ST. PAUL AVE.
 AND REQUEST TO CONVERSION TO EASEMENT
 A PORTION OF AN ALLEY IN THE BLOCK BOUNDED BY
 KERCHEVAL AVE., MELDRUM AVE.,
 BEAUFAIT AVE. AND ST. PAUL AVE.

CITY OF DETROIT
CITY ENGINEERING DIVISION
SURVEY BUREAU

JOB NO. 01-01

DRWG. NO. X 1002