

DEPARTMENTAL REFERENCE COMMUNICATION

Monday, March 04, 2019

To: The Department or Commission Listed Below

From: Janice M. Winfrey, Detroit City Clerk

The following petition is herewith referred to you for report and recommendation to the City Council.

In accordance with that body's directive, kindly return the same with your report in duplicate within four (4) weeks.

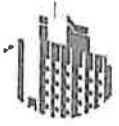
PLANNING AND DEVELOPMENT DEPARTMENT DPW - CITY ENGINEERING DIVISION

STREET ALREADY VACATED
SEE LAST PAGE

728 *Parkstone Development Partners, request to vacate the public alley abutted by 2916 Hammond and 5914 Federal to the west, and 5780 Federal to the east, and to close and vacate the portion of Hammond abutted by 6100 Ranspach to the west and 2916 Hammond to the east.*

12 B 12 E
103 102

#728



PARKSTONE

January 11, 2019

Honorable Detroit City Council
C/o Detroit City Clerk
2 Woodward Avenue
200 Coleman A. Young Municipal Center
Detroit, MI 48226

RE: Alley Vacation and Street Closure

Dear Honorable Council Members,

Parkstone Development Partners respectfully requests the outright vacation of the public alley abutted by 2916 Hammond and 5914 Federal to the west, and 5780 Federal to the east. In addition, we request the closure and vacation of that portion of Hammond Street abutted by 6100 Ranspach to the west and 2916 Hammond to the east. The purpose of these vacations is to consolidate lots that are under single ownership. Thank you for your consideration and attention toward this matter. Please don't hesitate to contact me with any questions or concerns.

Respectfully,

Janelle Corsaro, Project Manager
Parkstone Development Partners
janelle@parkstonedevelopment.com
313-636-1518

2019-03-04

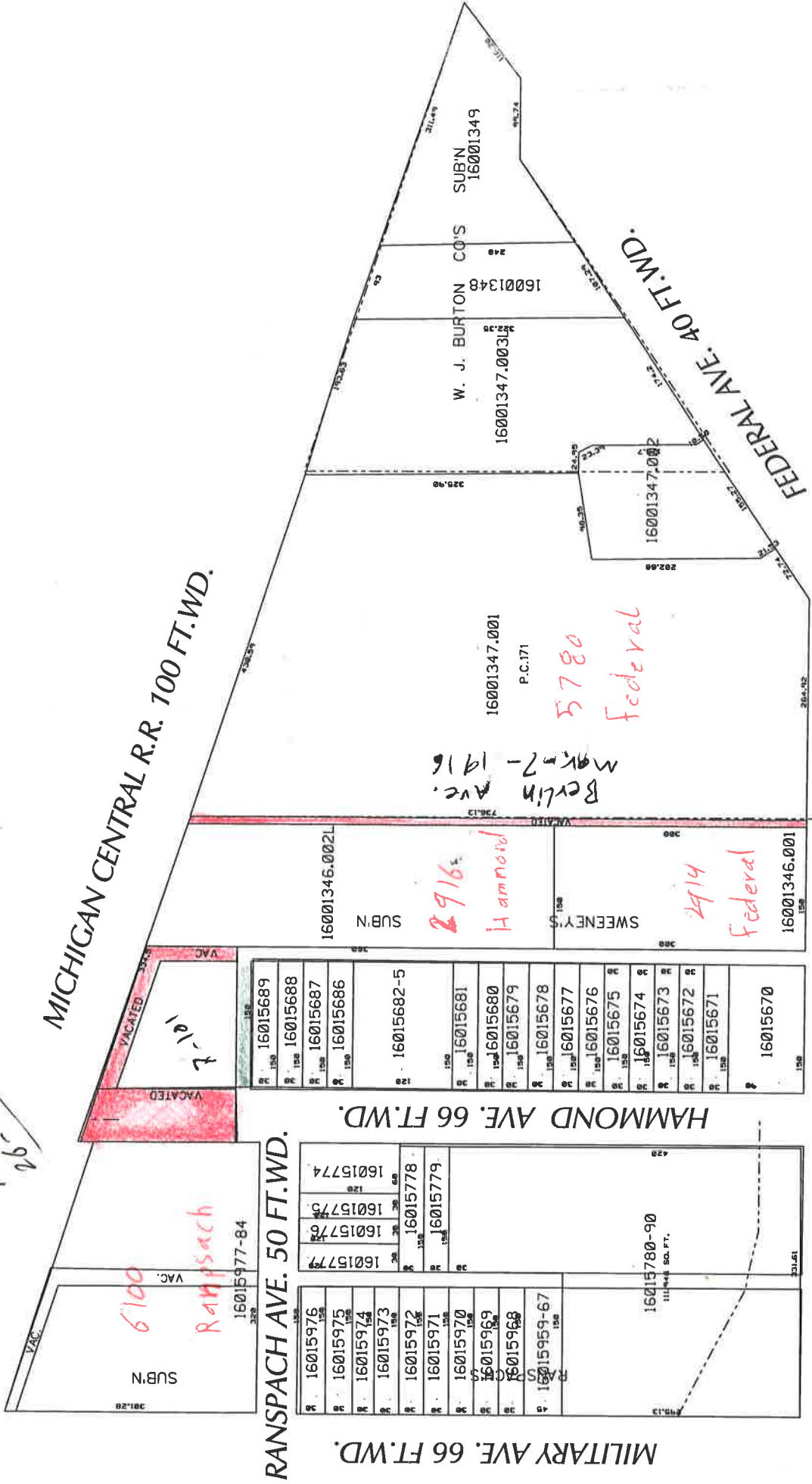
728

728 *Petition of Parkstone Development Partners, request to vacate the public alley abutted by 2916 Hammond and 5914 Federal to the west, and 5780 Federal to the east, and to close and vacate the portion of Hammond abutted by 6100 Ranspach to the west and 2916 Hammond to the east.*

REFERRED TO THE FOLLOWING DEPARTMENT(S)

PLANNING AND DEVELOPMENT DEPARTMENT DPW -
CITY ENGINEERING DIVISION

AG 161-1914



MICHIGAN CENTRAL R.R. 100 FT. WD.

FEDERAL AVE. 40 FT. WD.

MILITARY AVE. 66 FT. WD.

HAMMOND AVE. 66 FT. WD.

RANSPACH AVE. 50 FT. WD.

FEDERAL AVE. 66 FT. WD.

12 B 12 E

3-43