

Janice M. Winfrey  
City Clerk

**City of Detroit**  
OFFICE OF THE CITY CLERK

Caven West  
Deputy City Clerk/Chief of Staff

**DEPARTMENTAL REFERENCE COMMUNICATION**

*Thursday, December 13, 2018*

*To: The Department or Commission Listed Below*

*From: Janice M. Winfrey, Detroit City Clerk*

---

The following petition is herewith referred to you for report and recommendation to the City Council.

In accordance with that body's directive, kindly return the same with your report in duplicate within four (4) weeks.

---

PLANNING AND DEVELOPMENT DEPARTMENT    DPW - CITY ENGINEERING DIVISION

- 611**    *Department of Public Works City Engineering Division, request to vacate public streets: Old Atwater Street from Shelby (now Civic Center Dr) to Woodward Ave; Woodward from Jefferson to the Detroit River; and Griswold from Old Atwater to Jefferson.*



CITY OF DETROIT  
DEPARTMENT OF PUBLIC WORKS  
CITY ENGINEERING DIVISION

611  
COLEMAN A. YOUNG MUNICIPAL CENTER  
2 WOODWARD AVE. SUITE 601  
DETROIT, MICHIGAN 48226  
PHONE: (313) 224-3949 • TTY: 711  
FAX: (313) 224-3471  
WWW.DETROITMI.GOV

December 5, 2018

The Honorable City Council  
Attn: Office of the City Clerk  
200 Coleman A. Young Municipal Center  
Detroit, MI 48226

Dear Honorable Body,

The Department of Public Works City Engineering Division submits this Petition Request to vacate Public Streets: Old Atwater Street from Shelby (now Civic Center Drive) to Woodward Avenue; also Woodward Avenue from Jefferson Avenue to the Detroit River; also Griswold Street from Old Atwater to Jefferson.

The purpose of this request is to eliminate the existing rights-of-way that are currently used as part of Hart Plaza.

Your prompt consideration of this request will be greatly appreciated. Once a petition number is established, Please contact our office:

DPW – City Engineering  
C/o Keith McCrary  
Suite 642  
Coleman A. Young Municipal Center  
Detroit, MI 48226  
Phone: (313) 224-3970  
Email: [mccraryk@detroitmi.gov](mailto:mccraryk@detroitmi.gov)

Respectfully submitted,



Richard Doherty, City Engineer  
City Engineering Division – DPW

CITY CLERK 5 DEC 2018 PM3:27



60 FT. WD. 60 FT. WD. 60 FT. WD.

79	80	81	82	83	84	85	86	87	88	89	90	91	92	93	94	95	96	97	98	99	100
18	17	16	15	14	13	12	11	10	9	8	7	6	5	4	3	2	1	0	0	0	0

WOODWARD

100	101	102	103	104	105	106	107	108	109	110	111	112	113	114	115	116	117	118	119	120
50	51	52	53	54	55	56	57	58	59	60	61	62	63	64	65	66	67	68	69	70

GRISWOLD

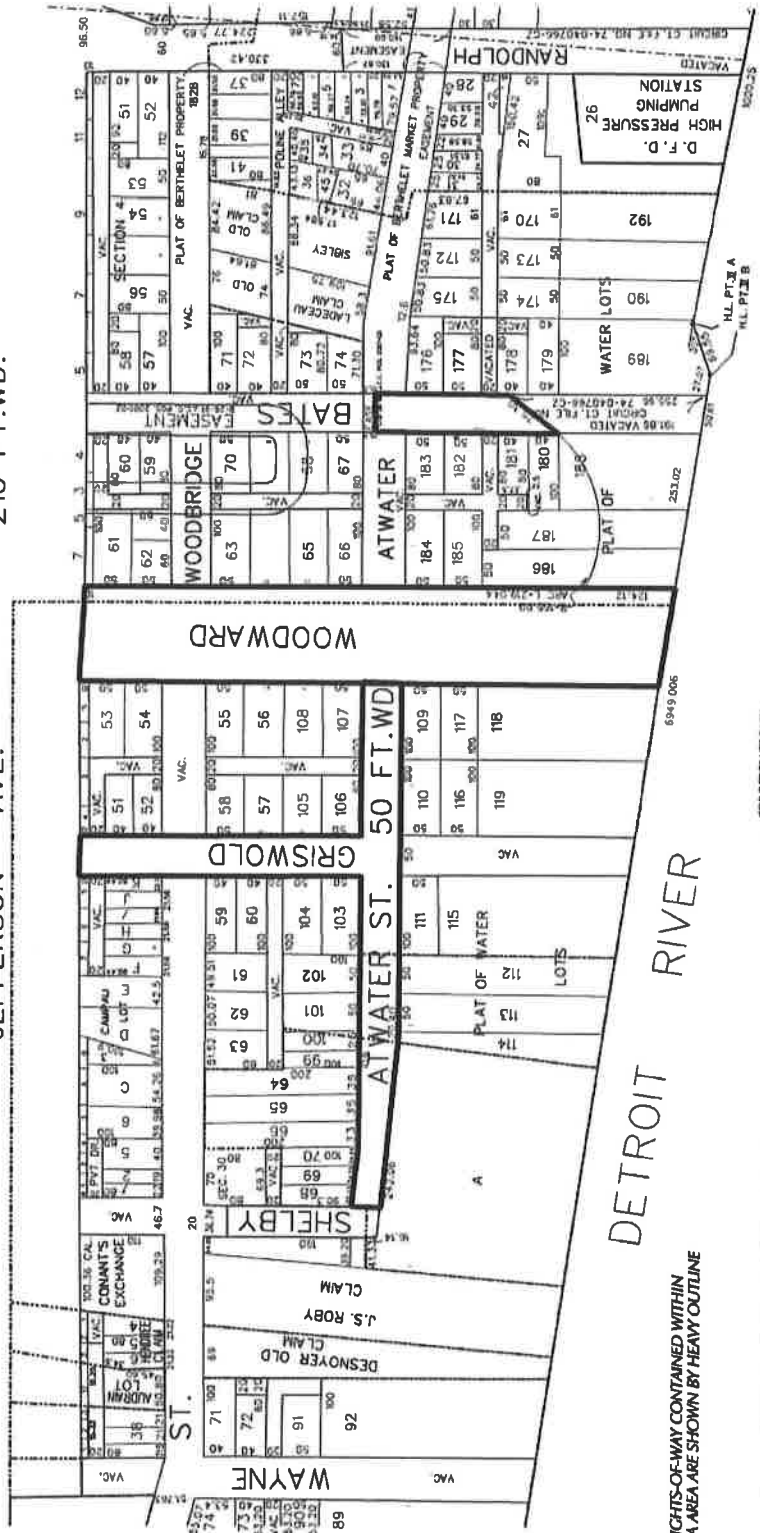
120	121	122	123	124	125	126	127	128	129	130	131	132	133	134	135	136	137	138	139	140
50	51	52	53	54	55	56	57	58	59	60	61	62	63	64	65	66	67	68	69	70

LARNED ST.

140	141	142	143	144	145	146	147	148	149	150	151	152	153	154	155	156	157	158	159	160
50	51	52	53	54	55	56	57	58	59	60	61	62	63	64	65	66	67	68	69	70

ST. 210 FT. WD.

COLEMAN A. YEMIG  
INTERNATIONAL CIVIC CENTER  
LODGE FRY - 500 W. WOODWARD ST. - 4TH FLOOR - DETROIT, MI 48226  
4-20-88 J.C.C. Proj. 914



OPEN RIGHTS-OF-WAY CONTAINED WITHIN  
HART PLAZA AREA ARE SHOWN BY HEAVY OUTLINE

NO SCALE  
CARTO 28 EF

NO. 1	DESCRIPTION	REVISED DATE
A.	REVISION	
DATE	BY	CHECKED
5-10-18	JK	APPROVED

HART PLAZA AREA OPEN PUBLIC STREETS:  
WOODWARD AVE. FROM JEFFERSON AVE. TO THE DETROIT RIVER  
GRISWOLD ST. FROM JEFFERSON TO ATWATER ST.  
BATES ST. FROM ATWATER SOUTHWARD TO VACATED BATES ST.  
ATWATER ST. FROM CIVIC CENTER DR. (SHELBY) TO WOODWARD AVE.

CITY OF DETROIT  
CITY ENGINEERING DEPARTMENT  
SURVEY BUREAU  
JOB NO. HART PLAZA  
DRAWING NO. hart plaza.dgn

hart plaza.dgn 12/5/2018 11:21:54 AM

2018-12-13

611

611 *Petition of Department of Public Works City Engineering Division, request to vacate public streets: Old Atwater Street from Shelby (now Civic Center Dr) to Woodward Ave; Woodward from Jefferson to the Detroit River; and Griswold from Old Atwater to Jefferson.*

---

REFERRED TO THE FOLLOWING DEPARTMENT(S)

PLANNING AND DEVELOPMENT DEPARTMENT DPW -  
CITY ENGINEERING DIVISION