



CITY OF DETROIT
DEPARTMENT OF PUBLIC WORKS
CITY ENGINEERING DIVISION

COLEMAN A. YOUNG MUNICIPAL CENTER
2 WOODWARD AVE. SUITE 601
DETROIT, MICHIGAN 48226
PHONE: (313) 224-3949 • TTY: 711
FAX: (313) 224-3471
WWW.DETROITMI.GOV

February 26, 2020

Honorable City Council:

RE: Petition Number 610 – DPW, City Engineering Division, request to dedicate a public street: Dickerson Avenue from East Jefferson Avenue to Freud Avenue.

Petition No. 610 - The Department of Public Works – City Engineering Division request to dedicate land for the reroute of Dickerson Avenue, 66 feet wide, from East Jefferson Avenue, 120 feet wide, to Freud Avenue, 60 feet wide.

The petition was referred to the City Engineering Division – DPW for investigation (utility clearance) and report. This is our report.

The purpose of this request is to formally dedicate the previously constructed street. The street was rerouted and constructed in accordance with plans on file in the City Engineers office dated 12-11-1978. Dickerson Avenue was widened from 60 feet wide to 66 feet wide and rerouted from Jefferson Avenue and Emerson Avenue southward and curving to the east to align with the existing Dickerson Avenue.

All other city departments and utilities have reported no objections to the proposed right-of-way dedication.

I am recommending adoption of the attached resolution.

Respectfully submitted,

Richard Doherty, P. E., City Engineer
City Engineering Division – DPW

JMK/

Cc: Ron Brundidge, Director – DPW
Mayor's Office – City Council Liaison

BY COUNCIL MEMBER _____

RESOLVED, that that your Honorable Body authorize the acceptance of the following described properties owned by the City of Detroit for public street purposes:

Dickerson Avenue, widened to 66 feet wide and rerouted, from East Jefferson Avenue, 120 feet wide, to Freud Avenue, 60 feet wide, being land in the City of Detroit, Wayne County, Michigan described as follows:

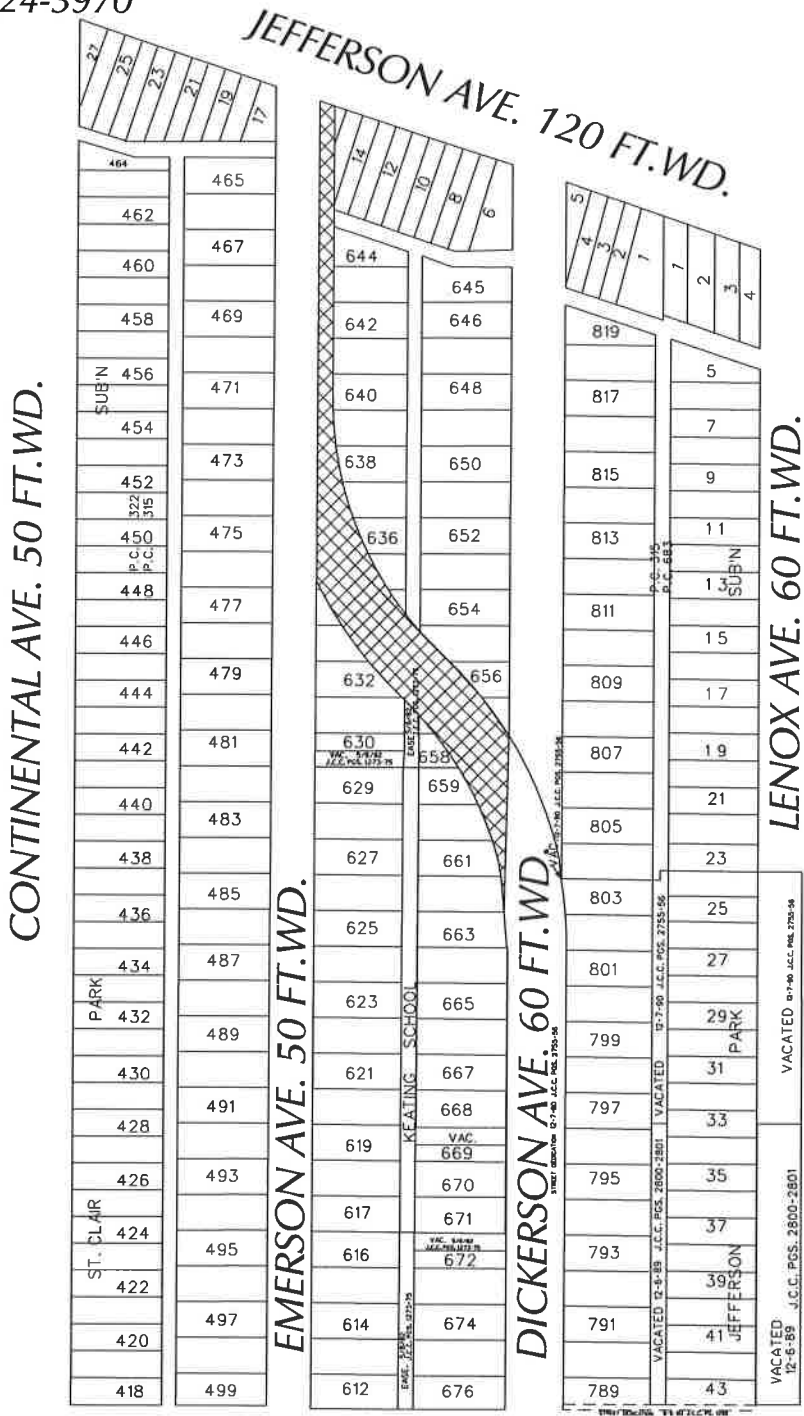
Part of Lots 14, 15, 16, and part of Lots 631 through 644, both inclusive and part of Lots 655 through 662 and part of the east-west alley, 18 feet wide, adjoining said parts of Lots, and part of the north-south alley, 18 feet wide, adjoining said parts of Lots "Saint Clair Park Subdivision of Part of P.C.s 315 & 322 South of Jefferson Avenue, City of Detroit, Wayne County, Michigan" as recorded in Liber 27, Page 90 of Plats, Wayne County Records; and being more particularly described as follows:

Beginning at the southeast corner of said Lot 662 "Saint Clair Park Subdivision" thence 317.17 feet along the arc of a curve, concave to the south, with a radius of 385.00 feet, a delta of 47°12'04" and a long chord of 308.28 feet that bears N52°32'02"W to a reverse curve; thence 157.16 feet along the arc of a reverse curve, concave to the north, with a radius of 451.00 feet, a delta of 19°57'58" and a long chord of 156.37 feet that bears N66°09'06"W to the east line of Emerson Avenue, 50 feet wide; thence N28°56'00"W along said east line, 537.55 feet to the south line of Jefferson Avenue, 120 feet wide; thence N79°22'51"E along said south line, 16.85 feet; thence S28°56'00"E 325.85 feet to a point of curvature; thence 317.17 feet along the arc of a curve, concave to the north with a radius of 385.00 feet, a delta of 47°12'04", and a long chord of 308.28 which bears S52°32'02"E to a reverse curve; thence 124.47 feet along the arc of a reverse curve, concave to the south, with a radius of 451.00 feet, a delta of 15°48'46" and a long chord of 124.07 feet that bears S68°13'40"E to the west line of Dickerson Avenue, 60 feet wide; thence S28°56'00"E along said west line 234.89 feet to the Point of Beginning.

PROVIDED, that any future work in re-constructing the street is to be performed in accordance with plans and specifications approved by City Engineering Division - DPW (CED) and constructed under the inspection and approval of CED; and further

PROVIDED, That the City Clerk shall within 30 days record a certified copy of this resolution with the Wayne County Register of Deeds.

PETITION NO. 610
 DPW - CITY ENGINEERING
 COLEMAN A. YOUNG MUNICIPAL CENTER
 DETROIT, MICHIGAN 48226
 KEITH MCCRARY
 PHONE NO. (313) 224-3970



- REQUEST STREET DEDICATION FREUD AVE. 60 FT. WD.

(FOR OFFICE USE ONLY)

CARTO 62 C

B					
A					
DESCRIPTION	DRWN	CHKD	APPD	DATE	
REVISIONS					
DRAWN BY	SA	CHECKED	KSM		
DATE	06-18-19	APPROVED			

REQUEST DEDICATION OF PUBLIC STREET
 DICKERSON AVE. FROM E. JEFFERSON AVE.
 TO FREUD AVE.

CITY OF DETROIT CITY ENGINEERING DIVISION SURVEY BUREAU	
JOB NO.	01-01
DRWG. NO.	X 610