



CITY OF DETROIT
DEPARTMENT OF PUBLIC WORKS
CITY ENGINEERING DIVISION

COLEMAN A. YOUNG MUNICIPAL CENTER
2 WOODWARD AVE. SUITE 601
DETROIT, MICHIGAN 48226
PHONE: (313) 224-3949 • TTY:711
FAX: (313) 224-3471
WWW.DETROITMI.GOV

March 27th, 2020

Petitioner,

RE: Petition No. x594

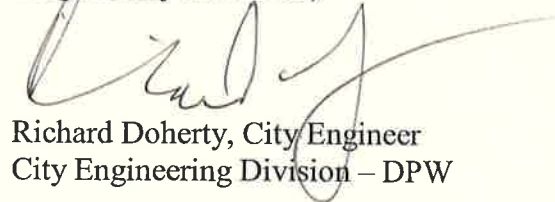
Petition No. x594 Grand Jefferson LLC, request to outright vacate part of the east-west and north-south alley between Helen Avenue and East Grand Blvd., and bounded by Lafayette Avenue and East Jefferson Avenue. In addition, request to dedicate a new east-west alley over lot 36 of "Lothrop's Subdivision" as records in Liber 8 Page 76 of Plats, Wayne County Records.

The petition was referred to the City Engineering Division – DPW for investigation (utility review) and report. This is our report.

The review of petition x594 has determined the minimum criteria to approve this request has not been met. The petitioner has not provided approved plans to provide a dedication to the City of Detroit for the proposed new alley segment. The allowed length of time to provide documentation for the plans associated with this petition has expired.

The Department of Public Works, City Engineering Division **denies** this petition request. Please receive and file this report for you reference.

Respectfully submitted,



Richard Doherty, City Engineer
City Engineering Division – DPW

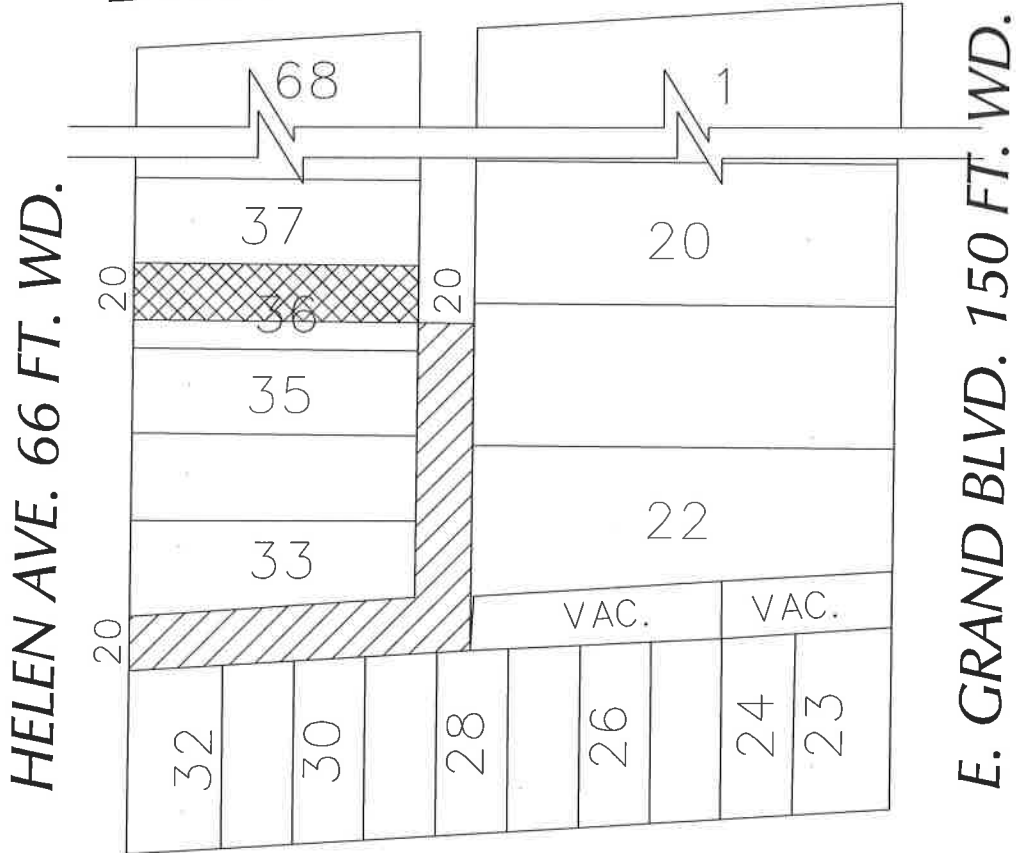
JMK/

Cc: Ron Brundidge, Director – DPW
Mayor's Office – City Council Liaison

PETITION NO. 594
 GRAND JEFFERSON LLC.
 3011 W. GRAND BLVD., SUITE 2300
 DETROIT, MICHIGAN 48202
 C/O GIFFELS WEBSTER
 TRICIA DEMARCO
 PHONE NO. (313) 962-4442



LAFAYETTE AVE. 50 FT. WD.



E. JEFFERSON AVE. 120 FT. WD.



- OUTRIGHT VACATION



- DEDICATION

(FOR OFFICE USE ONLY)

CARTO 46 C

B					
A					
DESCRIPTION		DRWN	CHKD	APPD	DATE
REVISIONS					
DRAWN BY	SA	CHECKED	KSM		
DATE	11-30-18	APPROVED			

- REQUEST TO OUTRIGHT VACATE
 THE NORTH/SOUTH AND EAST/WEST PORTION
 OF PUBLIC ALLEY, 20 FT. WD.
 - REQUEST FOR DEDICATION THE EAST/WEST
 OF PUBLIC ALLEY, 20 FT. WD.
 IN THE BLOCK BOUND BY HELEN AVE., LAFAYETTE AVE.,
 E. GRAND BLVD. AND E. JEFFERSON AVE.

CITY OF DETROIT
 CITY ENGINEERING DEPARTMENT
 SURVEY BUREAU

JOB NO. 01-01

DRWG. NO. X 594