

TO: City Engineering Division, DPW
2 Woodward Ave., Suite 642
Detroit, MI 48226-3462
Survey Bureau: 313-224-3970

Petition No. 573

The proposed change in property (referred to above) would affect our services as follows:

- Not Involved.

- Involved; but asking you to hold action on this petition until further notice.
- Involved; the nature of our services, and the estimated costs of removing and/or rerouting such services are:
- Involved; have no objection to request for conversion to easement the east/west public alley, 16 feet wide in the block bound by Riopelle, Russel St, Milwaukee Ave. and E. Grand Blvd as shown on drawing no. X 573 dated 11/09/2018 provided that 100% signatures of abutting property owners are secured.

Traffic Engineering Division - DPW
(Utility or City Department)

Ashok Patel

By

Sunny Jacob

City Traffic Engineer

Title

January 8, 2019

Date

313 224-1610

Area code-Telephone number

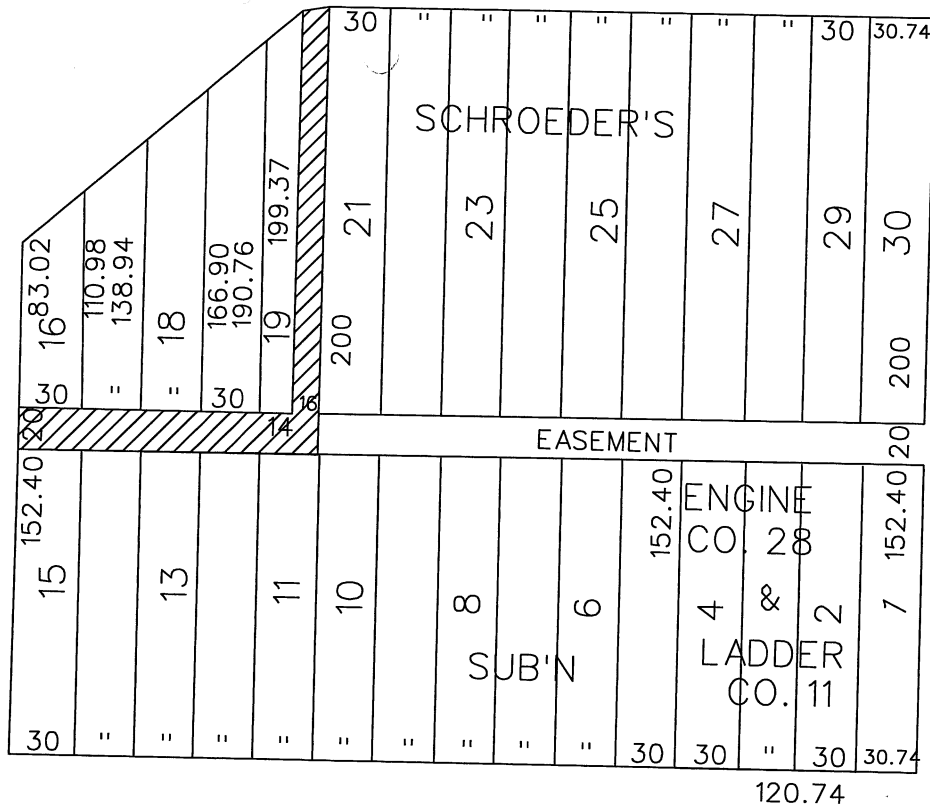
SJ/aa

PETITION NO. 573
 THE BANNER SIGN COMPANY
 6538 RUSSELL ST.
 DETROIT, MICHIGAN 48211
 NICOLE PIACH
 PHONE NO. 313 758-6737



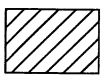
EAST GRAND BLVD. 150 FT. WD.

RUSSELL ST. 60 FT. WD.



RIOPELLE ST. 50 FT. WD.
 EASEMENT

MILWAUKEE AVE. 60 FT. WD.



- CONVERSION TO EASEMENT

(FOR OFFICE USE ONLY)

CARTO 41 D

B						CONVERSION TO EASEMENT THE EAST/WEST PUBLIC ALLEY, 20 FT. WD. AND THE NORTH/SOUTH PUBLIC ALLEY, 16 FT. WD. IN THE BLOCK BOUND BY RIOPELLE, RUSSELL ST, MILWAUKEE AVE. AND E. GRAND BLVD.	CITY OF DETROIT CITY ENGINEERING DIVISION SURVEY BUREAU	
A					JOB NO. 01-01			
DESCRIPTION		DRWN	CHKD	APPD	DATE			DRWG. NO. X 573
DRAWN BY		CHECKED		APPROVED				
DATE								