

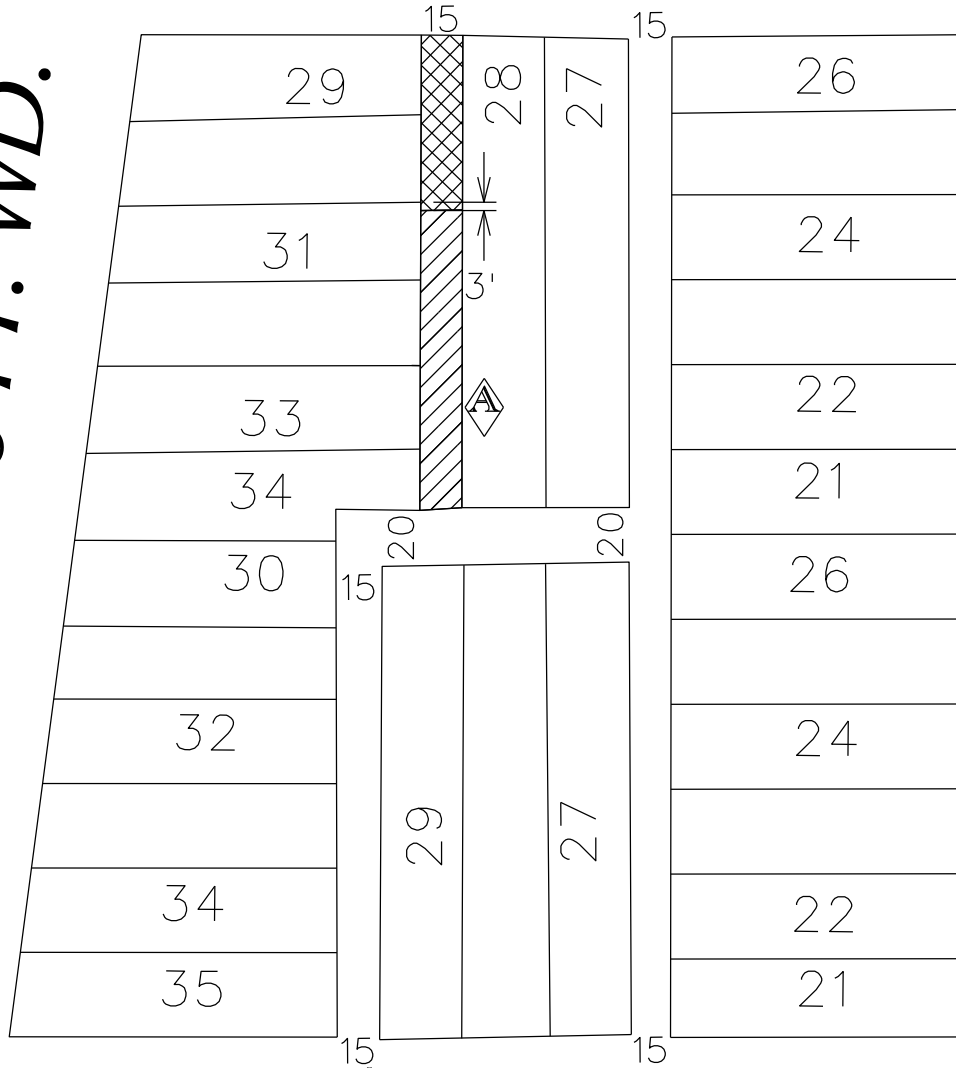
PETITION NO. 572
 Landy Cass Development Inc
 3138 CASS AVE.
 DETROIT, MICHIGAN 48201
 ALVIN MITCHELL
 HOUSING AND REVITALIZATION DEPARTMENT
 PHONE NO. (313) 224-2375

"REVISION-A"



CHARLOTTE AVE. 60 FT. WD.

CASS AVE. 80 FT. WD.

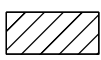


PARK AVE. 60 FT. WD.

TEMPLE AVE. 60 FT. WD.



- OUTRIGHT VACATION



- CONVERSION TO EASEMENT

(FOR OFFICE USE ONLY)

CARTO 29 E

B					
A	TO REQUEST AN CONVERSION TO EASEMENT	SA	KSM	JD	12/17/2019
	DESCRIPTION	DRWN	CHKD	APPD	DATE
REVISIONS					
DRAWN BY	SA	CHECKED	KSM		
DATE	03-04-19	APPROVED			

REQUEST TO OUTRIGHT VACATE THE NORTHERN PORTION OF THE NORTH/SOUTH PUBLIC ALLEY, 15 FT.WD AND REQUEST TO CONVERSION TO EASEMENT THE SOUTHERN PORTION OF THE NORTH/SOUTH PUBLIC ALLEY, 15 FT.WD IN THE BLOCK BOUND BY CHARLOTTE AVE., PARK AVE., TEMPLE AVE. AND CASS AVE.

CITY OF DETROIT CITY ENGINEERING DEPARTMENT SURVEY BUREAU	
JOB NO.	01-01
DRWG. NO.	X 572