

City of Detroit
City Engineering Division, Department of Public Works
Survey Bureau

NOTICE OF PROPOSED CHANGE IN PROPERTY

Date: 10/02/2018

Petition: x542

- ☐ AT&T Telecommunication
- ☐ Comcast Television (CATV)
- ☐ Detroit Edison (DTE)
- ☐ Fire Department
- ☐ Great Lakes Water Authority
- ☐ Land Bank Authority
- ☐ Michcon (DTE)
- ☐ Planning & Development Department
- ☒ Public Lighting Authority
- ☐ Public Lighting Department
- ☐ Police Department
- ☐ Solid Waste Division, DPW
- ☐ Street Design Bureau, DPW
- ☐ Street Maintenance Division, DPW
- ☐ Traffic Engineering Division, DPW
- ☐ Water and Sewerage Department
- ☐ _____

- ☐ Berm Use
- ☐ Conversion to Easement
- ☐ Dedication
- ☐ Encroachment
- ☒ Outright Vacation
- ☐ Temporary Closing

A petition drawing is attached. Property shown on the attached print is proposed to be changed as indicated. Kindly report (using the back of this sheet) the nature of your services, if any affected by the proposed change and the estimated costs of removing and rerouting such services (if necessary).

Please return one copy to City Engineering Division, DPW within two weeks of the submittal date. Retain one copy and print for you file.

Ron Brundidge, Director, Department of Public Works

By: Richard Doherty, CED DPW
City Engineer

TO: City Engineering Division, DPW
2 Woodward Ave., Suite 642
Detroit, Michigan 48226-3462
Survey Bureau: 313-224-3970

Petition: x542

The proposed change in property (referred to on the other side of this sheet) would affect our services as follows:

- ☒ Not Involved
- ☐ Involved; but asking you to hold action on this petition until further notice.
- ☐ Involved; but no objections to the property change.
- ☐ Involved; objection to the property change.
- ☐ Involved; but no objections to the property change...provided as easement of the full width of the public right-of-way (street, alley or other public place) is reserved.
- ☐ Involved; the nature of our services and the estimated costs of removing and/or rerouting such services are:

Public Lighting Authority
(Utility or City Department)

Mukesh Patel
By

Engineer
Title

10/13/18
Date

313-324-8291
Area code - Telephone number

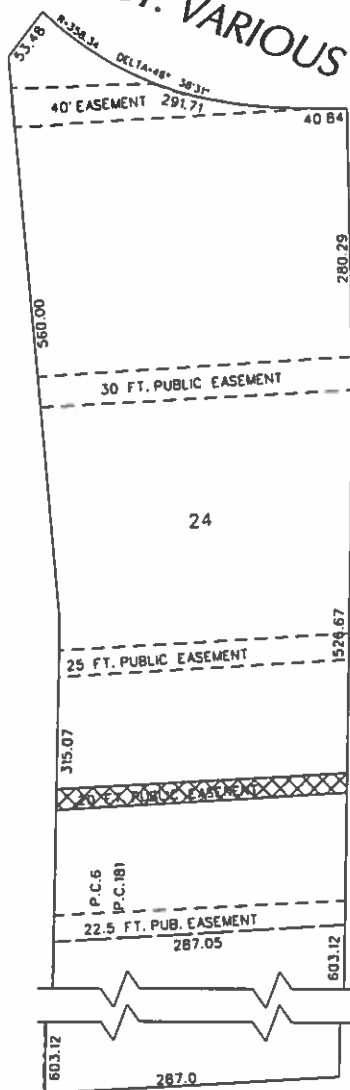
PETITION NO. 542
 LAFAYETTE ACQUISITION PARTNERS, LLC
 C/O PEA, INC
 2430 ROCHESTER CT, SUITE 100
 TROY, MICHIGAN 48083
 C/O DOUG KENNEDY P.E.
 PHONE NO. 248 689-9090



ANTIETAM ST. VARIOUS WIDTHS

WALTER P. CHRYSLER FWY.

RIVARD ST. 70 FT. WD.



E. LAFAYETTE AVE. 120 FT. WD.



- OUTRIGHT VACATION

(FOR OFFICE USE ONLY)

CARTO 38 C

B					
A					
DESCRIPTION	DRWN	CHKD	APPD	DATE	
REVISIONS					
DRAWN BY	WLW	CHECKED	KSM		
DATE	10-02-18	APPROVED			

REQUEST TO OUTRIGHT VACATE
 THE EAST/WEST PUBLIC EASEMENT 20 FT. WD.
 IN THE AREA BOUND BY
 ANTIETAM, RIVARD ST, E. LAFAYETTE AVE.
 AND WALTER P. CHRYSLER FWY.

CITY OF DETROIT CITY ENGINEERING DIVISION SURVEY BUREAU	
JOB NO.	01-01
DRWG. NO.	X 542



PROFESSIONAL ENGINEERING ASSOCIATES, INC.

Civil Engineers | Land Surveyors | Landscape Architects

Corporate Office • 2430 Rochester Court • Suite 100 • Troy, MI 48063
(P) 248.689.9090 • (F) 248.689.1044 • www.peainc.com

September 10, 2018
PEA Project No. 2017-431

Detroit City Council
City of Detroit
C/O City Clerk's Office
Coleman A. Young Municipal Center
2 Woodward Ave., Suite 200
Detroit, MI 48226

**RE: Request to Vacate a Public Utility Easements within "Part of Lot 24 of Lafayette Park Subdivision of Part of Private Claims 6, 181, 7, 132, 12, 13, 8, and 17"; (Liber 80, Pg. 87, 88, 89, 90 & 91)
City of Detroit, MI**

Dear Council Members:

It is requested on behalf of Lafayette Acquisition Partners, LLC that the City of Detroit allow the vacation of a 20 feet wide public utility easement. This easement consists of the public utility easement created from the vacation an alley within the above referenced plat.

The proposed development will require the abandonment of the easement to allow a proposed building over the land encumbered by the easement. It is our understanding that no utilities exist within the easement. If any utilities are located, the owner and the design team will work with the entity to resolve any issues.

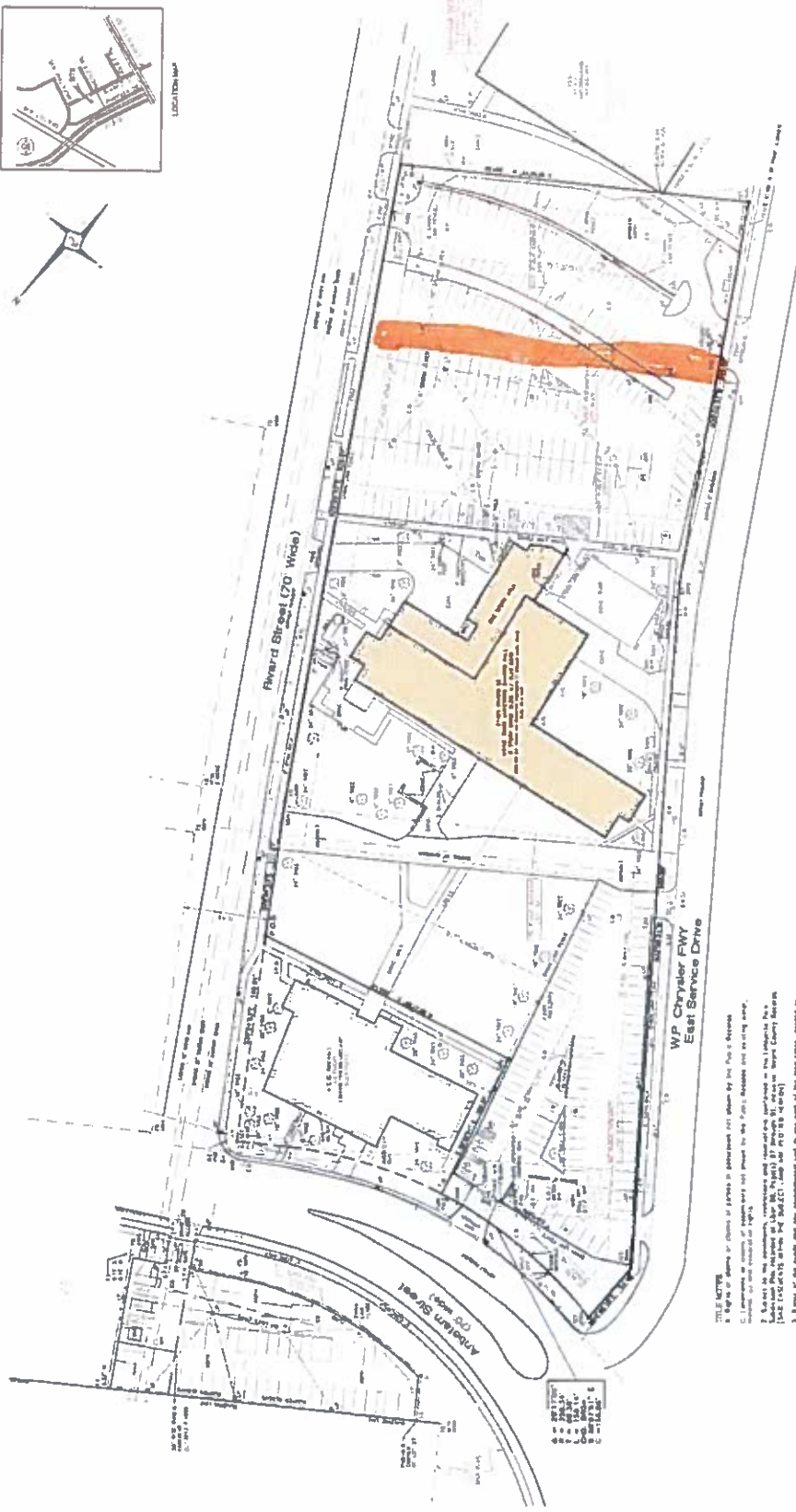
The address being affected by the vacation is:
1401 Rivard Street

We appreciate your consideration of our request. Please contact the undersigned at your convenience with any questions or comments.

Sincerely,

Doug Kennedy, PE
Project Engineer
dkennedy@peainc.com

encl: Alta Survey; Lafayette Park Subdivision page 3 or 5; Conceptual Site Utility Plan



As a consequence, the following are assumed to be the same as the corresponding quantities in the case of a single layer. The only difference is that the quantities are now defined for the whole structure. The quantities are defined as follows:

ENVIRONMENTAL CONTAMINATION

Forward all 15 copy readings
to: 1010 10th St. N. 7th Fl., Minneapolis, MN 55403

34. Young at
Heart: The
Lifeline

from 41 to 44 in the 1990s by a 10-

1. The first step is to identify the problem or question that needs to be answered. This involves understanding the context and the specific information required.

62-117000-10000

1000

1000

[illegible][illegible][illegible]