

TO: City Engineering Division, DPW  
2 Woodward Ave., Suite 642  
Detroit, MI 48226-3462  
Survey Bureau: 313-224-3970

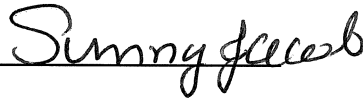
Petition No. 532

The proposed change in property (referred to above) would affect our services as follows:

- ☐ Not Involved.
- ☐ Involved; but asking you to hold action on this petition until further notice.
- ☐ Involved; the nature of our services, and the estimated costs of removing and/or rerouting such services are:
- ☒ Involved; have no objection to request for the conversion to easement the east/west public alley, 16 feet wide in the block bound by Milwaukee Ave., Brush St., E. Grand Blvd and Beaubien St. as shown on drawing no. X532 dated 05/13/19 provided that 100% signatures of abutting property owners are secured.

Traffic Engineering Division - DPW  
(Utility or City Department)

Ashok Patel  
By



City Traffic Engineer  
Title

July 15, 2019  
Date

313 224-1610  
Area code-Telephone number

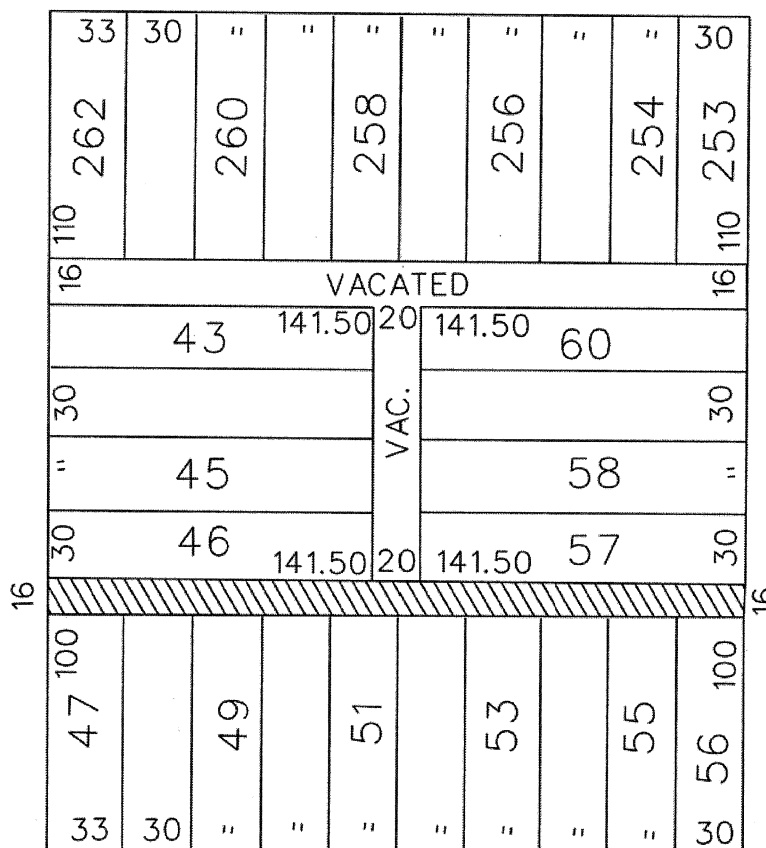
Aa/aa

PETITION NO. 532  
 MJ PARCELS LLC,  
 C/O GIFFELS WEBSTER  
 28 W. ADAMS, SUITE 1200  
 DETROIT, MICHIGAN 48226  
 PHONE NO. 313 962-4442



**E. GRAND BLVD 150 FT. WD.**

**BRUSH ST. 60 FT. WD.**



**BEAUBIEN ST. 60 FT. WD.**

**E. MILWAUKEE AVE. 60 FT. WD.**



- CONVERSION TO EASEMENT

(FOR OFFICE USE ONLY)

CARTO 31 F

B						- CONVERSION TO EASEMENT THE EAST/ WEST PUBLIC ALLY, 16 FT. WD IN THE BLOCK BOUND BY MILWAUKEE AVE., BRUSH ST., E. GRAND BLVD AND BEAUBIEN ST.	<b>CITY OF DETROIT</b> CITY ENGINEERING DIVISION SURVEY BUREAU JOB NO. 01-01 DRWG. NO. X 532
A							
DESCRIPTION		DRWN	CHKD	APPD	DATE		
DRAWN BY SA		CHECKED KSM					
DATE 05-13-19		APPROVED					