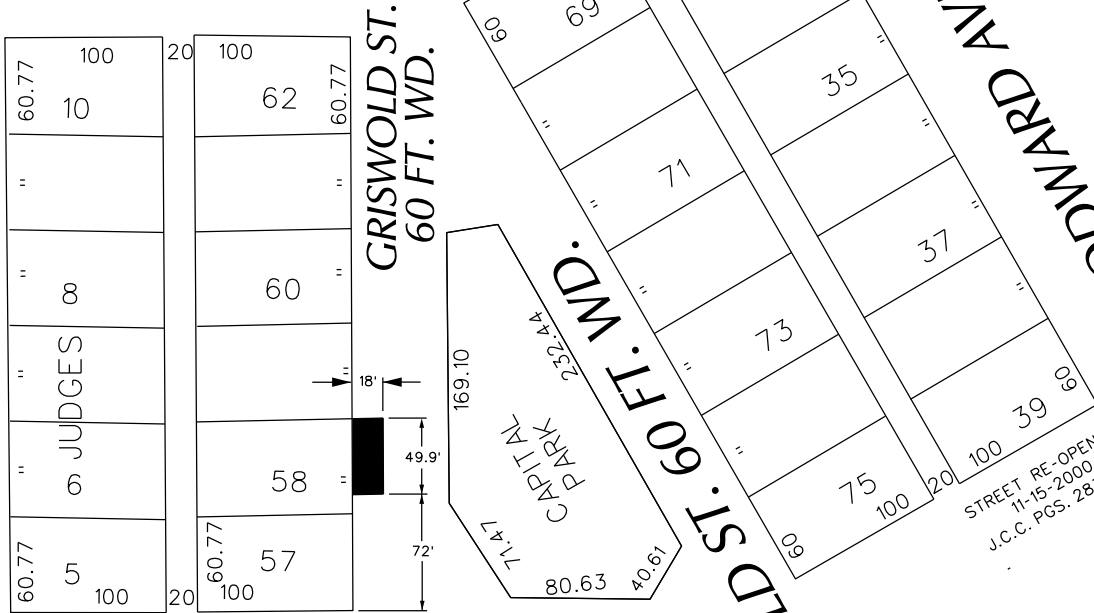


PETITION NO. 526
 BEDROCK MANAGEMENT SERVICES, LLC
 C/O GIFFELS WEBSTER
 28 W. ADAMS, SUITE 1200
 DETROIT, MICHIGAN 48226
 C/O MICHAEL MARKS P.E.
 PHONE NO. 313 962-4442



WASHINGTON BLVD. 195 FT. WD.

GD. RIVER AVE.
 60 FT. WD.



STATE ST. 69 FT. WD.

STREET RE-OPENED
 11-15-2000
 J.C.C. PGS. 2836-37

 - REQUEST ENCROACHMENT
 (With Outdoor Cafe Seating)

(FOR OFFICE USE ONLY)

CARTO 28 B

B					
A					
DESCRIPTION	DRWN	CHKD	APPD	DATE	
REVISIONS					
DRAWN BY	WLW	CHECKED	KSM		
DATE	10-25-18	APPROVED			

REQUEST ENCROACHMENT
 INTO GRISWOLD
 AT 1215 GRISWOLD
 (With Outdoor Cafe Seating)

CITY OF DETROIT CITY ENGINEERING DIVISION SURVEY BUREAU	
JOB NO.	01-01
DRWG.NO.	X 526