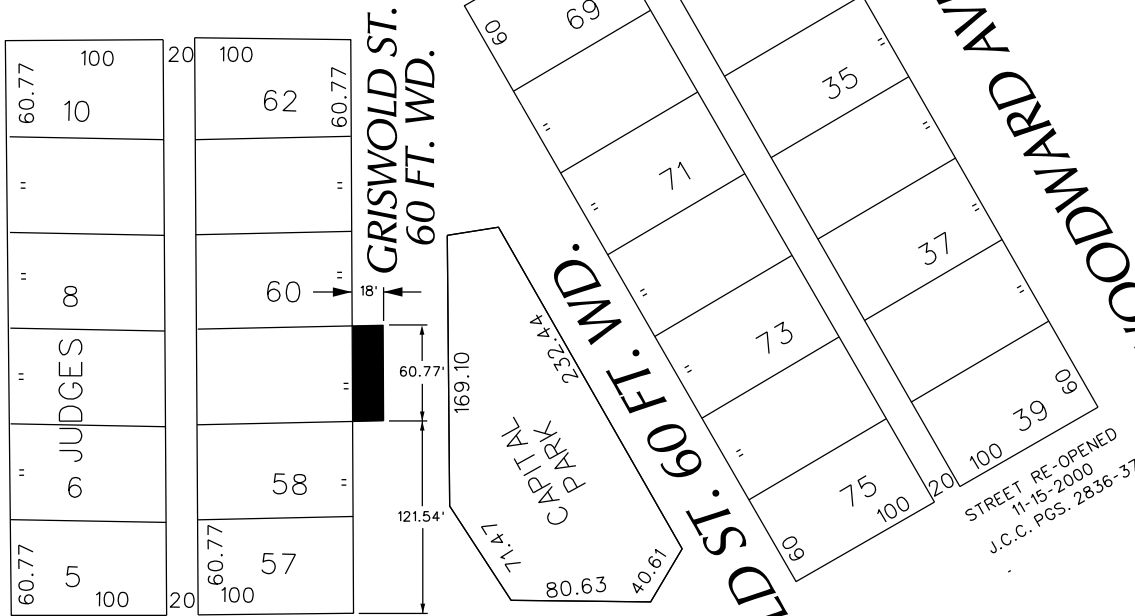


PETITION NO. 525
 1227 GRISWOLD LLC
 C/O GIFFELS WEBSTER
 28 W. ADAMS, SUITE 1200
 DETROIT, MICHIGAN 48226
 C/O MICHAEL MARKS P.E.
 PHONE NO. 313 962-4442



WASHINGTON BLVD. 195 FT. WD.

GD. RIVER AVE.
 60 FT. WD.



STATE ST. 69 FT. WD.



- REQUEST ENCROACHMENT
 (With Outdoor Cafe Seating)

(FOR OFFICE USE ONLY)

CARTO 28 B

REQUEST ENCROACHMENT
 INTO GRISWOLD
 AT 1227 GRISWOLD
 (With Outdoor Cafe Seating)

CITY OF DETROIT
 CITY ENGINEERING DIVISION
 SURVEY BUREAU

B					
A					
DESCRIPTION	DRWN	CHKD	APPD	DATE	
REVISIONS					
DRAWN BY	WLW	CHECKED	KSM		
DATE	10-25-18	APPROVED			

JOB NO. 01-01
 DRWG. NO. X 525