

City of Detroit
City Engineering Division, Department of Public Works
Survey Bureau

GLWA GPET 18-60

NOTICE OF PROPOSED CHANGE IN PROPERTY

Date: 09/13/2018

Petition: x504

- | | |
|---|---|
| <input type="checkbox"/> AT&T Telecommunication
<input type="checkbox"/> Comcast Television (CATV)
<input type="checkbox"/> Detroit Edison (DTE)
<input type="checkbox"/> Fire Department
<input checked="" type="checkbox"/> Great Lakes Water Authority
<input type="checkbox"/> Land Bank Authority
<input type="checkbox"/> Michcon (DTE)
<input type="checkbox"/> Planning & Development Department
<input type="checkbox"/> Public Lighting Authority
<input type="checkbox"/> Public Lighting Department
<input type="checkbox"/> Police Department
<input type="checkbox"/> Solid Waste Division, DPW
<input type="checkbox"/> Street Design Bureau, DPW
<input type="checkbox"/> Street Maintenance Division, DPW
<input type="checkbox"/> Traffic Engineering Division, DPW
<input type="checkbox"/> Water and Sewerage Department
<input type="checkbox"/> _____ | <input type="checkbox"/> Berm Use
<input type="checkbox"/> Conversion to Easement
<input type="checkbox"/> Dedication
<input type="checkbox"/> Encroachment
<input checked="" type="checkbox"/> Outright Vacation
<input type="checkbox"/> Temporary Closing |
|---|---|

A petition drawing is attached. Property shown on the attached print is proposed to be changed as indicated. Kindly report (using the back of this sheet) the nature of your services, if any affected by the proposed change and the estimated costs of removing and rerouting such services (if necessary).

Please return one copy to City Engineering Division, DPW within two weeks of the submittal date. Retain one copy and print for you file.

Ron Brundidge, Director, Department of Public Works

By: Richard Doherty, CED DPW
City Engineer

**TO: City Engineering Division, DPW
2 Woodward Ave., Suite 642
Detroit, Michigan 48226-3462
Survey Bureau: 313-224-3970**

Petition: x504

The proposed change in property (referred to on the other side of this sheet) would affect our services as follows:

- Not Involved

- Involved; but asking you to hold action on this petition until further notice.

- Involved; but no objections to the property change.

- Involved; objection to the property change.

- Involved; but no objections to the property change...provided as easement of the full width of the public right-of-way (street, alley or other public place) is reserved.

- Involved; the nature of our services and the estimated costs of removing and/or rerouting such services are:

URAP - GLWA
(Utility or City Department)

DAUG ECHOLS
By

ET
Title

09-15-2018
Date

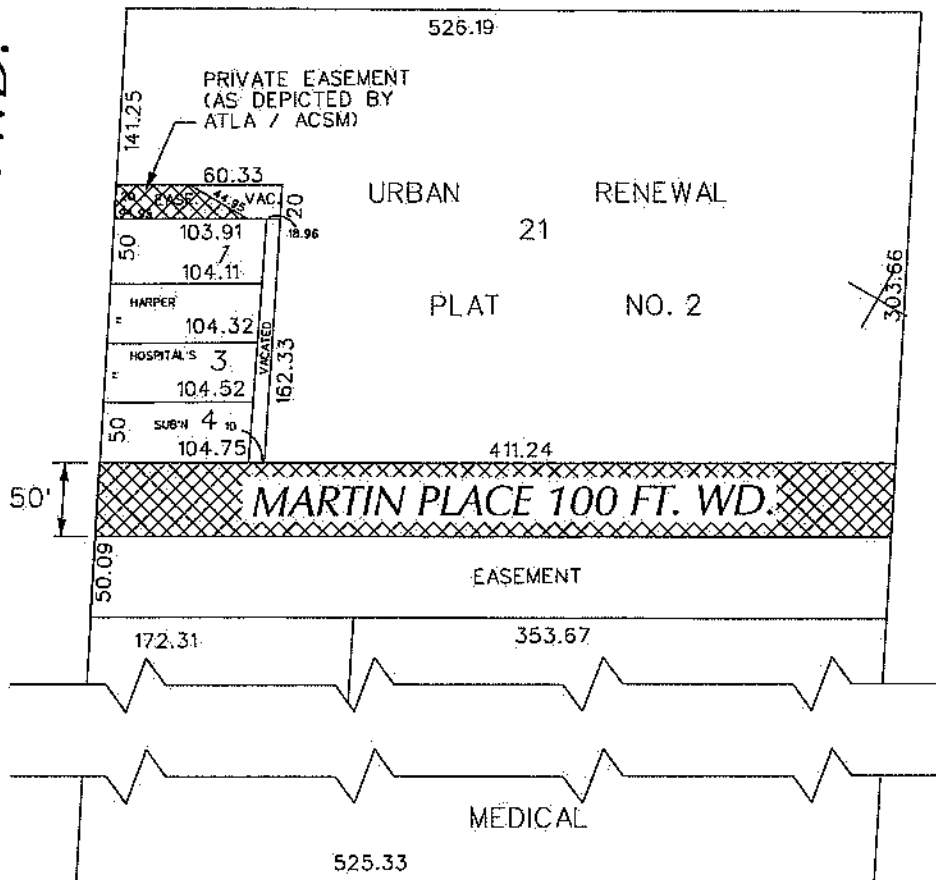
(313) 267-4858
Area code – Telephone number

PETITION NO. 504
 MIDTOWN HOSPITALITY LLC
 C/O PEA, INC
 2430 ROCHESTER CT. SUITE 100
 TROY, MICHIGAN 48083
 C/O DOUG KENNEDY P.E.
 PHONE NO. 248 689-9090



ALEXANDRINE AVE. 120 FT. WD.

WOODWARD AVE. 120 FT. WD.



JOHN R. ST. 84 FT. WD.

MACK AVE. 120 FT. WD.



- OUTRIGHT VACATION

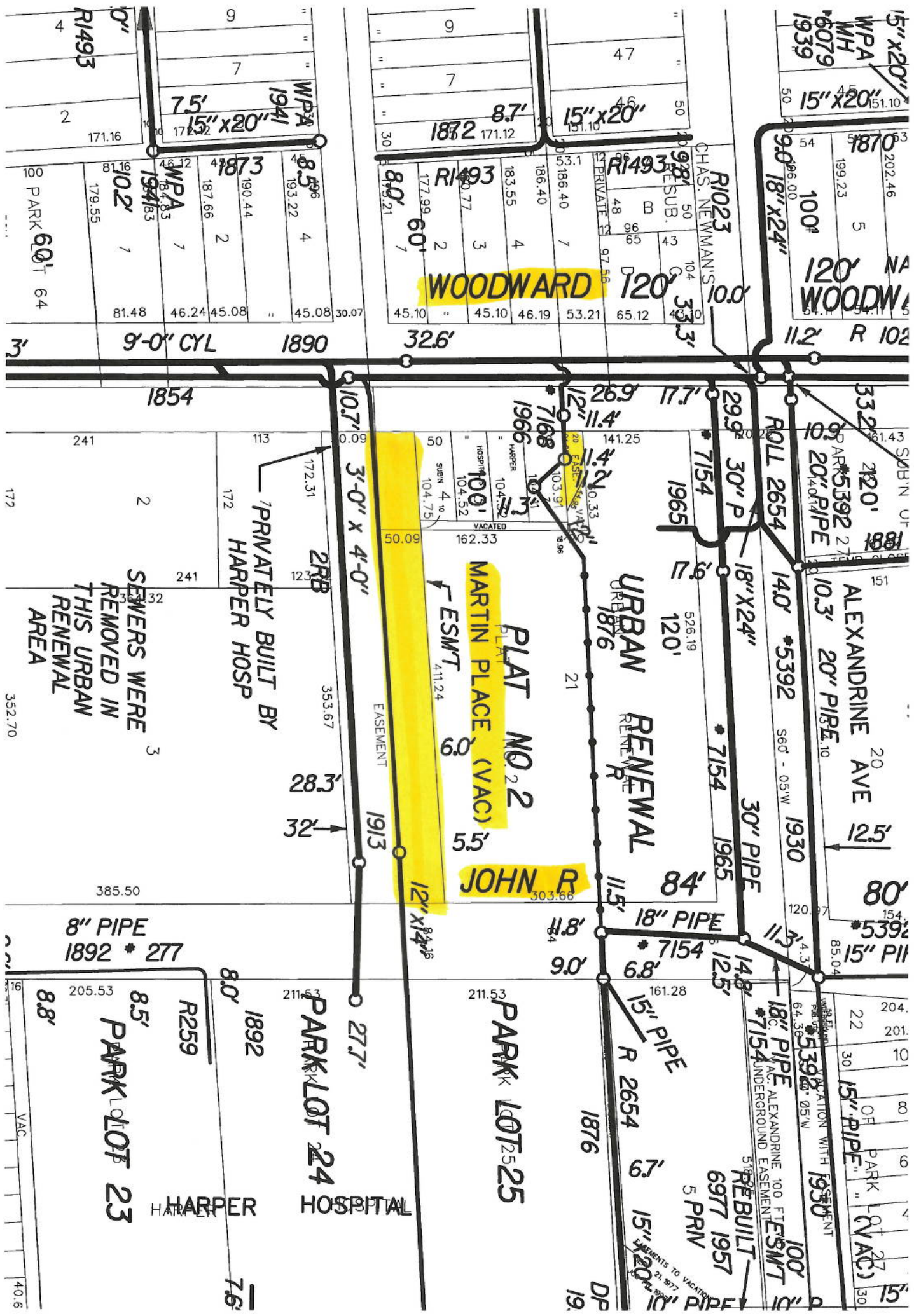
(FOR OFFICE USE ONLY)

CARTO 29 A

B					
A					
DESCRIPTION	DRWN	CHKD	APPD	DATE	
REVISIONS					
DRAWN BY	WLW	CHECKED	KSM		
DATE	09-13-18	APPROVED			

REQUEST TO OUTRIGHT VACATE
 THE NORTHERN PORTION OF THE EASTWEST
 PRIVATE EASEMENT OF
 MARTIN PLACE 100 FT. WD. AND
 THE EASTWEST PRIVATE EASEMENT
 (As Depicted by ATLA / ACSM), 20 FT. WD.
 IN THE AREA BOUND BY
 ALEXANDRINE, WOODWARD, MACK AVE.
 AND JOHN R. ST.

CITY OF DETROIT CITY ENGINEERING DIVISION	
SURVEY BUREAU	
JOB NO.	01-01
DRWG. NO.	X 504



WOODWARD 120'

PLAT NO 2
MARTIN PLACE (VAC)
ESMT
411.24

JOHN R

PARK LOT 25

PARK LOT 24

PARK LOT 23

HARPER HOSPITAL

SEWERS WERE
REMOVED IN
THIS URBAN
RENEWAL
AREA

PRIVATELY BUILT BY
HARPER HOSP

REBUILT
UNDERGROUND EASEMENT
15" PIPE

15" PIPE

15" PIPE

15" PIPE

15" PIPE

15" PIPE

15" PIPE

15" PIPE

15" PIPE

15" PIPE

15" PIPE

15" PIPE

15" PIPE

15" PIPE

15" PIPE

15" PIPE

15" PIPE

15" PIPE

15" PIPE

15" PIPE

15" PIPE

15" PIPE

15" PIPE

15" PIPE

15" PIPE

15" PIPE

15" PIPE

15" PIPE

15" PIPE

15" PIPE

15" PIPE

15" PIPE

15" PIPE

15" PIPE

15" PIPE

15" PIPE

15" PIPE

15" PIPE

15" PIPE

15" PIPE

15" PIPE

15" PIPE

15" PIPE

15" PIPE

15" PIPE

15" PIPE

15" PIPE

15" PIPE

15" PIPE

15" PIPE

15" PIPE

15" PIPE

15" PIPE

15" PIPE

15" PIPE

15" PIPE

15" PIPE

15" PIPE

15" PIPE

15" PIPE

15" PIPE

15" PIPE

15" PIPE

15" PIPE

15" PIPE

15" PIPE

15" PIPE

15" PIPE

15" PIPE

15" PIPE

15" PIPE

15" PIPE

15" PIPE

15" PIPE

15" PIPE

15" PIPE

15" PIPE

15" PIPE

15" PIPE

15" PIPE

15" PIPE

15" PIPE

15" PIPE

15" PIPE

15" PIPE

15" PIPE

15" PIPE

15" PIPE

15" PIPE

15" PIPE

15" PIPE

15" PIPE

15" PIPE

15" PIPE

15" PIPE

15" PIPE

15" PIPE

15" PIPE

15" PIPE

15" PIPE

15" PIPE

15" PIPE

15" PIPE

15" PIPE

15" PIPE

15" PIPE

15" PIPE

15" PIPE

15" PIPE

15" PIPE

15" PIPE

15" PIPE

15" PIPE

15" PIPE

15" PIPE

15" PIPE

15" PIPE

15" PIPE

15" PIPE

15" PIPE

15" PIPE

15" PIPE

15" PIPE

15" PIPE

15" PIPE

15" PIPE

15" PIPE

15" PIPE

15" PIPE

15" PIPE

15" PIPE

15" PIPE

15" PIPE

15" PIPE

15" PIPE

15" PIPE

15" PIPE

15" PIPE

15" PIPE

15" PIPE

15" PIPE

15" PIPE

15" PIPE

15" PIPE

15" PIPE

15" PIPE

15" PIPE

15" PIPE

15" PIPE

15" PIPE

15" PIPE

15" PIPE

15" PIPE

15" PIPE

15" PIPE

15" PIPE

15" PIPE

15" PIPE

15" PIPE

15" PIPE

15" PIPE

15" PIPE

15" PIPE

15" PIPE

15" PIPE

15" PIPE

15" PIPE

15" PIPE

15" PIPE

15" PIPE

15" PIPE

15" PIPE

15" PIPE

15" PIPE

15" PIPE

15" PIPE

15" PIPE

15" PIPE

15" PIPE

15" PIPE

15" PIPE

15" PIPE

15" PIPE

15" PIPE

15" PIPE

15" PIPE

15" PIPE

15" PIPE

15" PIPE

15" PIPE

15" PIPE

15" PIPE

15" PIPE

15" PIPE

15" PIPE

15" PIPE

15" PIPE

15" PIPE

15" PIPE

15" PIPE

15" PIPE

15" PIPE

15" PIPE

15" PIPE

15" PIPE

15" PIPE

15" PIPE

15" PIPE

15" PIPE

15" PIPE

15" PIPE

15" PIPE

15" PIPE

15" PIPE

15" PIPE

15" PIPE

15" PIPE

15" PIPE

15" PIPE

15" PIPE

15" PIPE

15" PIPE

15" PIPE

15" PIPE

15" PIPE

15" PIPE

15" PIPE

15" PIPE

15" PIPE

15" PIPE