

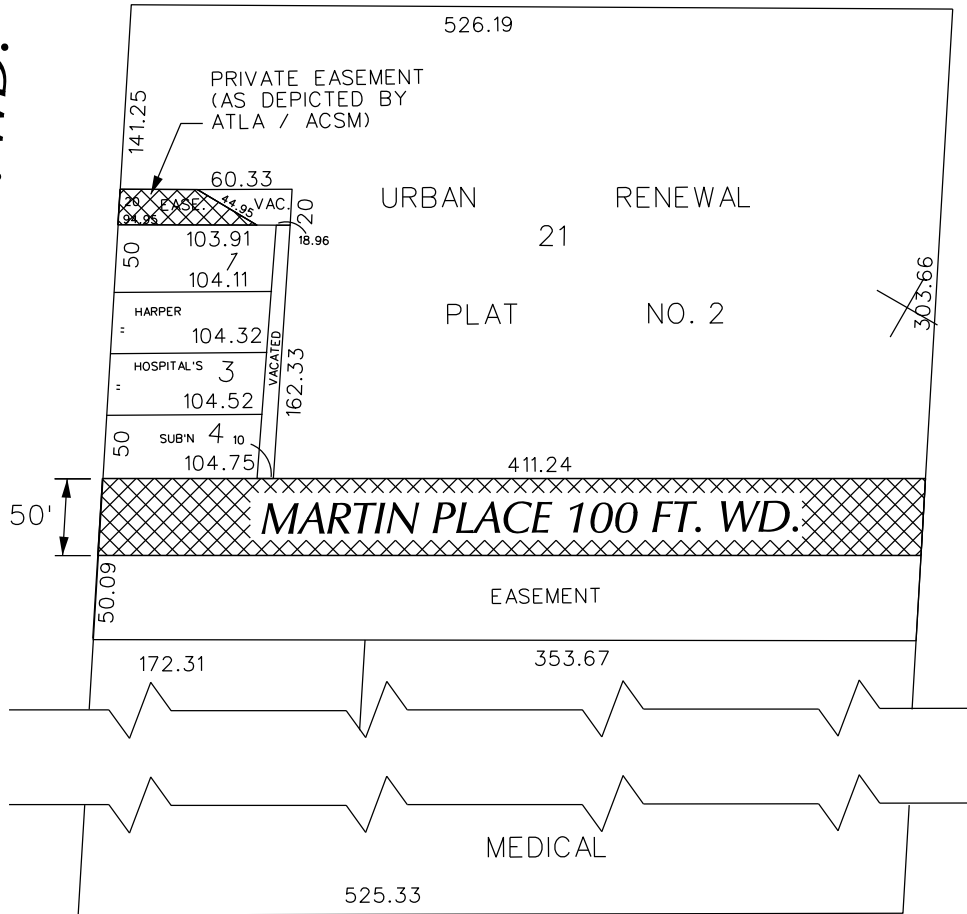
PETITION NO. 504
 MIDTOWN HOSPITALITY LLC
 C/O PEA, INC
 2430 ROCHESTER CT. SUITE 100
 TROY, MICHIGAN 48083
 C/O DOUG KENNEDY P.E.
 PHONE NO. 248 689-9090



ALEXANDRINE AVE. 120 FT. WD.

WOODWARD AVE. 120 FT. WD.

JOHN R. ST. 84 FT. WD.



MACK AVE. 120 FT. WD.



- OUTRIGHT VACATION

(FOR OFFICE USE ONLY)

CARTO 29 A

<p>B</p>					<p>REQUEST TO OUTRIGHT VACATE THE NORTHERN PORTION OF THE EAST/WEST PRIVATE EASEMENT OF MARTIN PLACE 100 FT. WD. AND THE EAST/WEST PRIVATE EASEMENT (As Depicted By ATLA / ACSM), 20 FT. WD. IN THE AREA BOUND BY ALEXANDRINE, WOODWARD, MACK AVE. AND JOHN R. ST.</p>	<p>CITY OF DETROIT CITY ENGINEERING DIVISION SURVEY BUREAU</p>			
<p>A</p>						<p>JOB NO. 01-01</p>			
<p>DESCRIPTION</p>			<p>DRWN</p>	<p>CHKD</p>		<p>APPD</p>	<p>DATE</p>	<p>DRWG. NO. X 504</p>	
<p>REVISIONS</p>						<p>DATE 09-13-18</p>		<p>APPROVED</p>	
<p>DRAWN BY WLW</p>			<p>CHECKED KSM</p>						