



CITY OF DETROIT  
DEPARTMENT OF PUBLIC WORKS  
CITY ENGINEERING DIVISION

COLEMAN A. YOUNG MUNICIPAL CENTER  
2 WOODWARD AVE. SUITE 601  
DETROIT, MICHIGAN 48226  
PHONE: (313) 224-3949 • TTY: 711  
FAX: (313) 224-3471  
WWW.DETROITMI.GOV

April 5th, 2021

Petitioner,

RE: Petition No. 504

Petition No. 504 of "Midtown Hospitality, LLC", represented by Professional Engineering Associates, Inc., request for the 'Outright Vacation' of the utility easement located on the vacated Martin Place, between Woodward Avenue and John R Road.

Petition x504 referred to the City Engineering Division – DPW for investigation (utility review) and report. This is our report.

After reviewing the petitioner's request it was determined that the petitioner did not submit adequate information for the utility plan. 'Outright vacations' require the abandonment or re-routing of utility services. At this time, no utility plan has been submit to the permitting office and the length of time to conduct this review has expired. If the petitioner would like to re-submit, please visit the City of Detroit website to review the permit and petition requirements.

Permit review:

<https://detroitmi.gov/departments/department-public-works/right-way-permits-and-standards>

Petition review:

<https://detroitmi.gov/departments/department-public-works/maps-and-records>

The Department of Public Works, City Engineering Division **denies** this petition request. Please receive and file this report for your reference.

Respectfully submitted,

Richard Doherty, City Engineer  
City Engineering Division – DPW

JMK/

Cc: Ron Brundidge, Director – DPW  
Mayor's Office – City Council Liaison

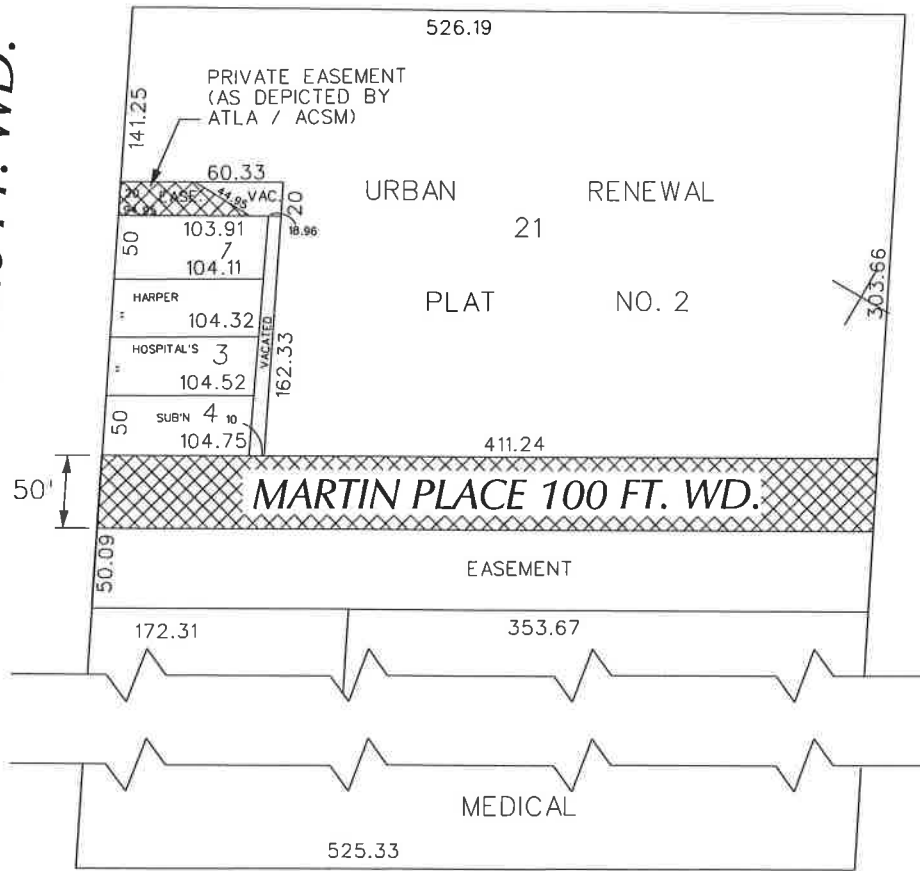
PETITION NO. 504  
 MIDTOWN HOSPITALITY LLC  
 C/O PEA, INC  
 2430 ROCHESTER CT. SUITE 100  
 TROY, MICHIGAN 48083  
 C/O DOUG KENNEDY P.E.  
 PHONE NO. 248 689-9090



ALEXANDRINE AVE. 120 FT. WD.

WOODWARD AVE. 120 FT. WD.

JOHN R. ST. 84 FT. WD.



MACK AVE. 120 FT. WD.



- OUTRIGHT VACATION

(FOR OFFICE USE ONLY)

CARTO 29 A

B					
A					
DESCRIPTION		DRWN	CHKD	APPD	DATE
REVISIONS					
DRAWN BY	WLW	CHECKED	KSM		
DATE	09-13-18	APPROVED			

REQUEST TO OUTRIGHT VACATE  
 THE NORTHERN PORTION OF THE EAST/WEST  
 PRIVATE EASEMENT OF  
 MARTIN PLACE 100 FT. WD. AND  
 THE EAST/WEST PRIVATE EASEMENT  
 (As Depicted By ATLA / ACSM), 20 FT. WD.  
 IN THE AREA BOUND BY  
 ALEXANDRINE, WOODWARD, MACK AVE.  
 AND JOHN R. ST.

CITY OF DETROIT CITY ENGINEERING DIVISION SURVEY BUREAU	
JOB NO.	01-01
DRWG. NO.	X 504