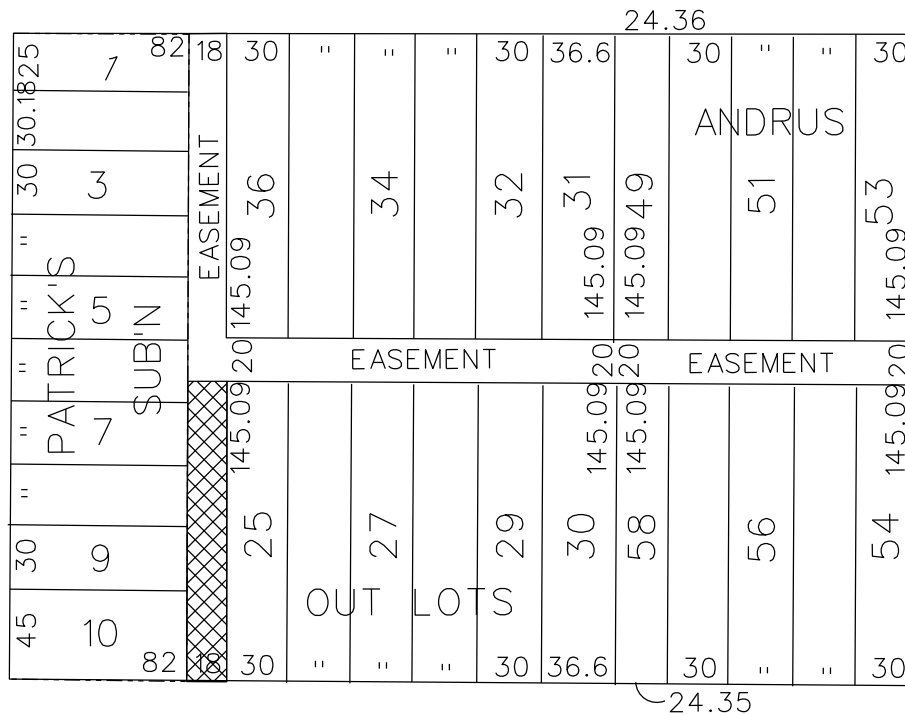


PETITION NO. 452  
 WAYNE COUNTY  
 C/O GIFFELS WEBSTER  
 28 W. ADAMS, SUITE 1200  
 DETROIT, MICHIGAN 48226  
 C/O SCOTT CLEIN  
 PHONE NO. 313 962-4442



**KIRBY AVE. 60 FT. WD.**

**RUSSELL ST. 80 FT. WD.**



**RIOPELLE ST. 50 FT. WD.**

**FREDERICK AVE. 60 FT. WD.**



- OUTRIGHT VACATION

(FOR OFFICE USE ONLY)

CARTO 40 C

B					REQUEST TO OUTRIGHT VACATE THE SOUTH PORTION OF THE NORTH/SOUTH PUBLIC EASEMENT, 18 FT. WD. IN THE BLOCK BOUND BY KIRBY, FREDERICK AVE, RIOPELLE AND RUSSELL ST.	CITY OF DETROIT CITY ENGINEERING DEPARTMENT SURVEY BUREAU
	A					
DESCRIPTION		DRWN	CHKD	APPD	DATE	JOB NO. 01-01
DRAWN BY WLW		CHECKED KSM				
DATE 08-06-18		APPROVED				DRWG. NO. X 452