

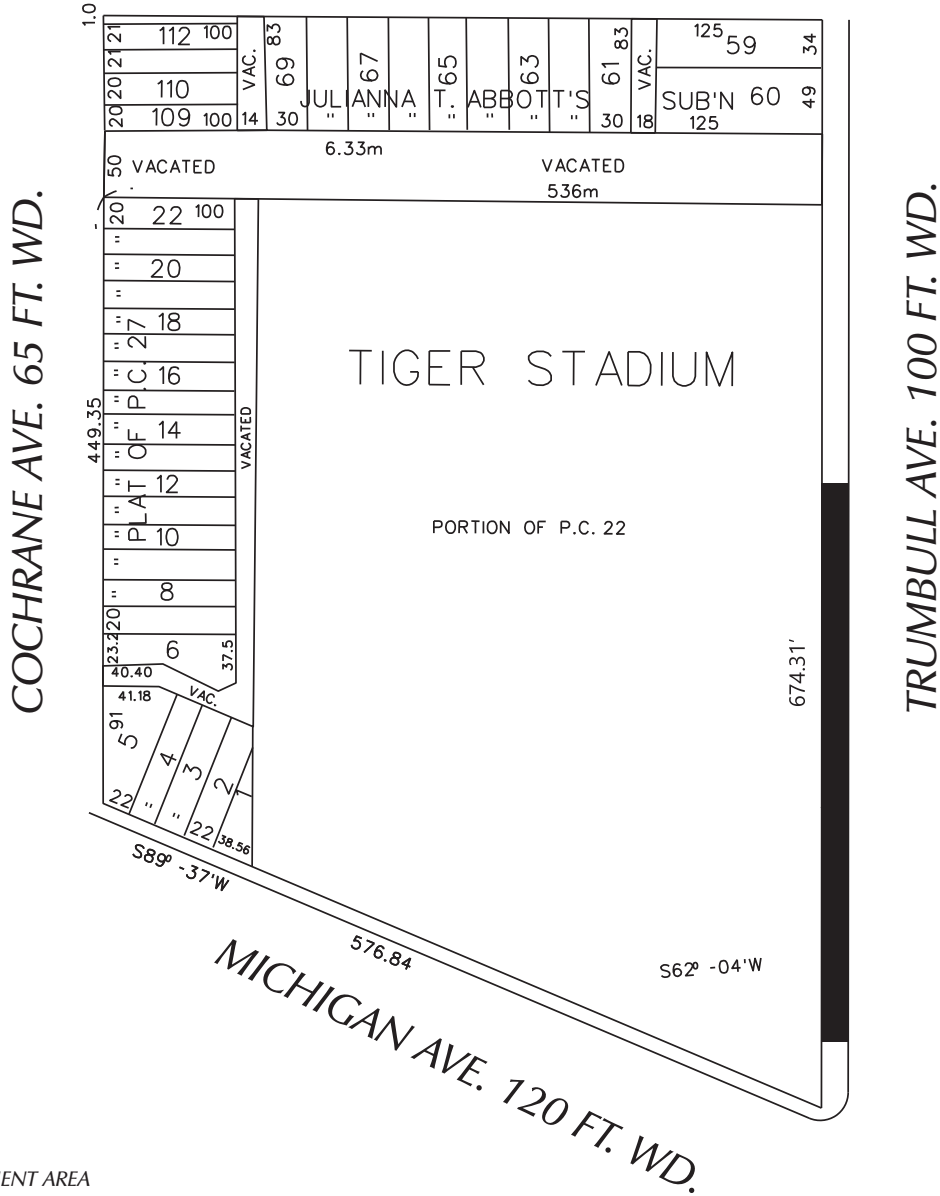
PETITION NO. 431
 THE CORNER
 C/O GIFFLES-WEBSTER 28 W. ADAMS, SUITE 1200
 DETROIT, MI 48226
 C/O MICHAEL NONA
 PHONE NO. 313-962-4442



"REVISED"

EASEMENT (FORMELY KALINE DR. 50 FT. WD.)

EASEMENT



 - ENCROACHMENT AREA

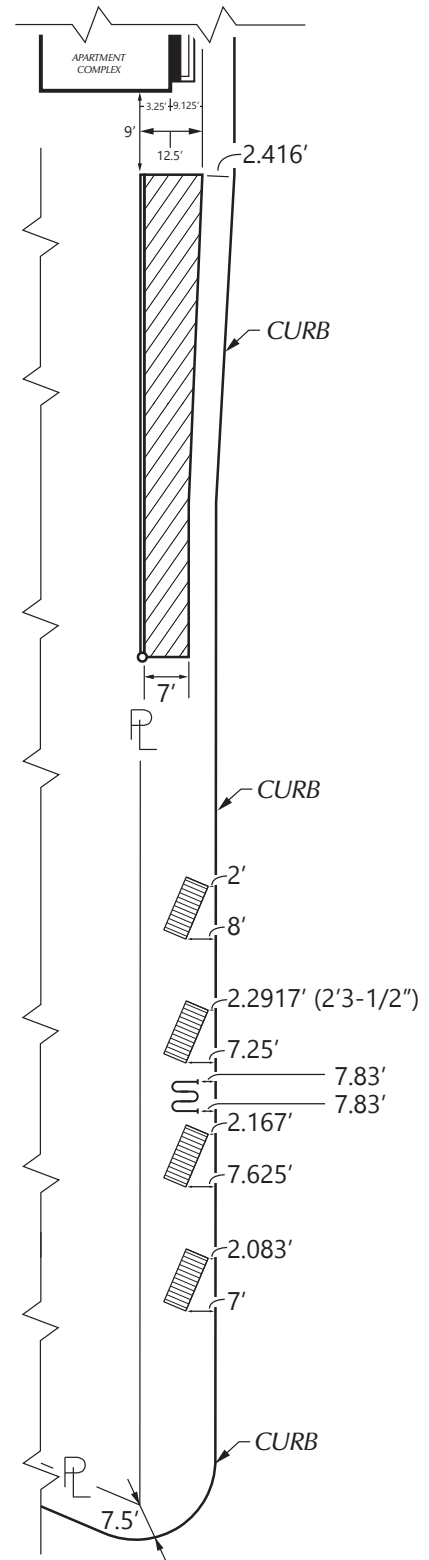
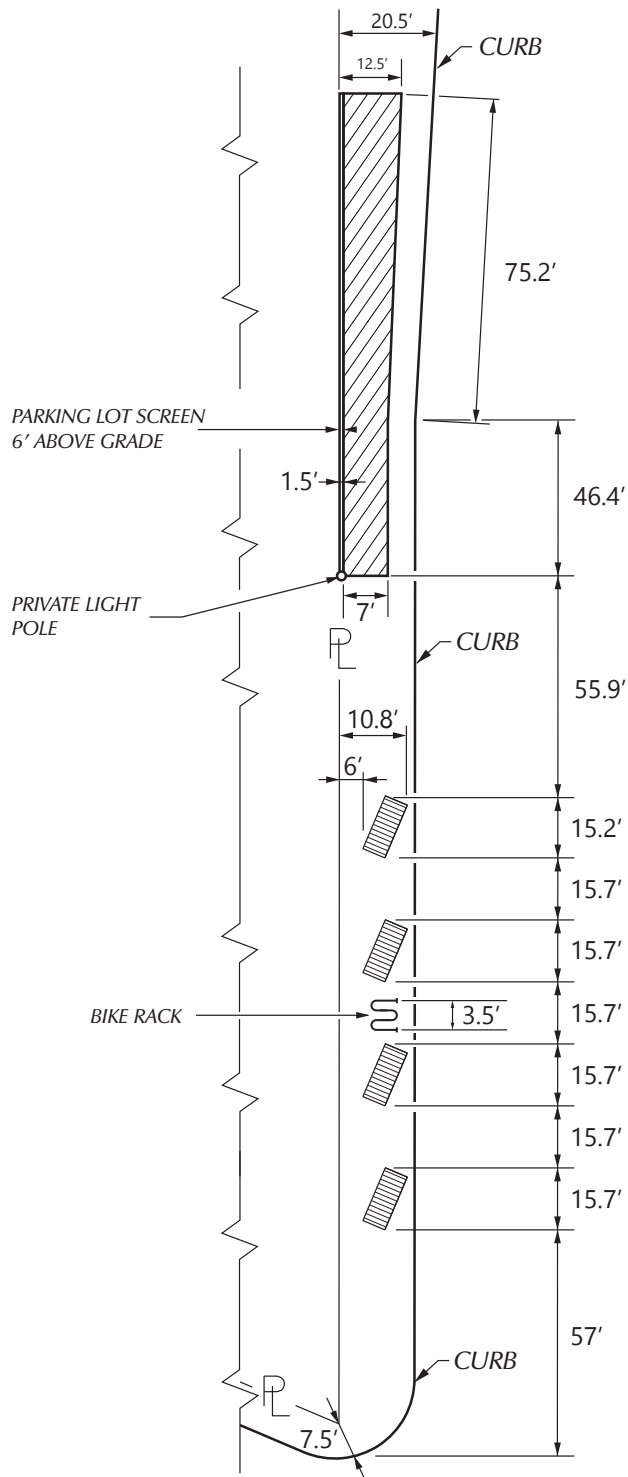
(FOR OFFICE USE ONLY)

CARTO 29 D

B	ADJUSTMENTS TO MEASUREMENTS, ALONG WITH BIKE RACK AND APARTMENT ADDITION	KJ		JD	03-16-21
A	ADJUSTING ENCROACHMENT AREA CURB FLARES OUT FROM 19' TO 24.5'	WLW	KSW	KSW	03-26-19
DESCRIPTION		DRWN	CHKD	APPD	DATE
REVISIONS					
DRAWN BY	WLW	CHECKED	KSW		
DATE	08-27-18	APPROVED BY			

ENCROACHMENT INTO R.O.W.
 IN THE BLOCK BOUND BY THE
 TRUMBULL AVE, MICHIGAN AVE,
 COCHRANE AVE, AND THE EASMENT
 FORMERLY KNOWN AS KALINE DR.

CITY OF DETROIT	
CITY ENGINEERING DIVISION	
SURVEY BUREAU	
JOB NO.	01-01
DRWG. NO.	X 431



- LANDSCAPE AREA
- TREE GRATES

(FOR OFFICE USE ONLY)

CARTO 29 D

B	ADJUSTMENTS TO MEASUREMENTS, ALONG WITH BIKE RACK AND APARTMENT ADDITION	Kj		JD	03-16-21
A	ADJUSTING ENCROACHMENT AREA CURB FLARES OUT FROM 19' TO 24.5'	WLW	KSW	KSW	03-26-19
DESCRIPTION	DRWN	CHKD	APPD	DATE	
REVISIONS					
DRAWN BY	WLW		CHECKED	KSW	
DATE	08-27-18		APPROVED BY		

**ENCROACHMENT INTO R.O.W.
IN THE BLOCK BOUND BY THE
TRUMBULL AVE, MICHIGAN AVE,
COCHRANE AVE, AND THE EASMENT
FORMERLY KNOWN AS KALINE DR.**

CITY OF DETROIT	
CITY ENGINEERING DIVISION	
SURVEY BUREAU	
JOB NO.	01-02
DRWG. NO.	X 431