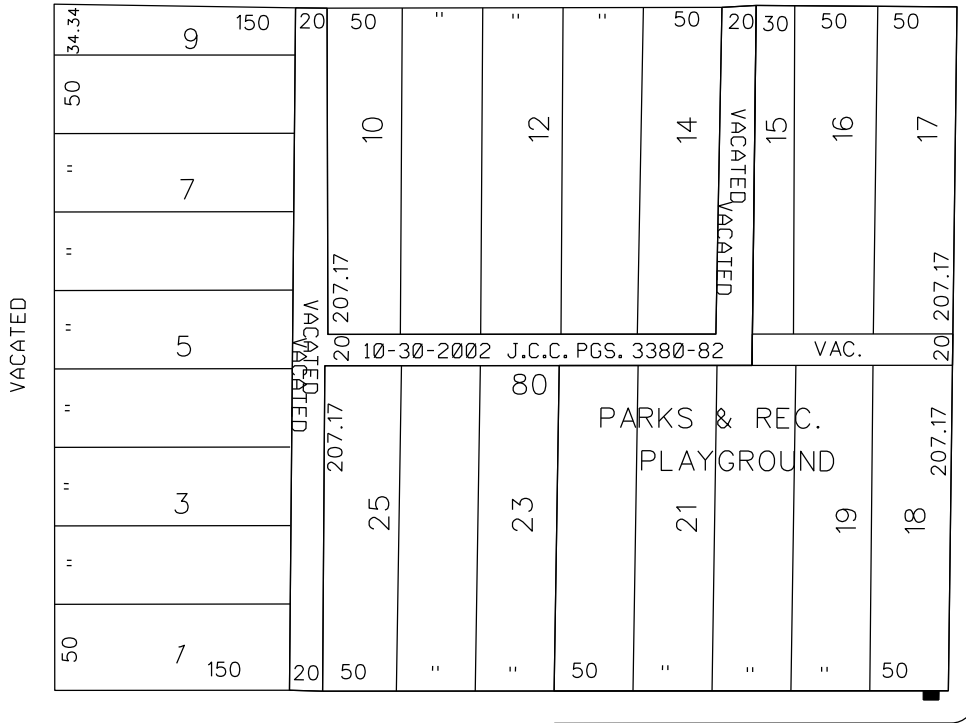


PETITION NO. 371  
 THE DETROIT PUBLIC SCHOOLS COMMUNITY DISTRICT  
 C/O GIFFELS WEBSTER  
 28 W. ADAMS, SUITE 1200  
 DETROIT, MICHIGAN 48226  
 C/O MICHAEL MARKS P.E.  
 PHONE NO. 313 962-4442



**LEDYARD ST. 100 FT. WD.**

**THIRD AVE. 70 FT. WD.**

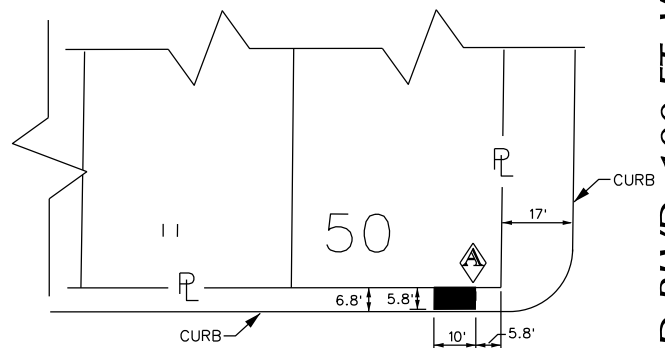


**SECOND BLVD. 100 FT. WD.**

**HENRY ST. 100 FT. WD.**

EASEMENT

**"REVISED"**



**HENRY ST. 100 FT. WD.**  
EASEMENT

**SECOND BLVD. 100 FT. WD.**

**- REQUEST ENCROACHMENT**  
 (With Concrete Foundation and Flag Pole)

(FOR OFFICE USE ONLY)

CARTO 29 E

<b>B</b>						<b>REQUEST ENCROACHMENT          INTO HENRY          AT 2501 SECOND BLVD.          (With Concrete Foundation and Flag Pole)</b>	<b>CITY OF DETROIT          CITY ENGINEERING DEPARTMENT          SURVEY BUREAU</b>	
<b>A</b>	PROPERTY LINE ON HENRY ST. WAS IN THE WRONG PLACE.	WLW	KSM	KSM	10/12/18			<b>JOB NO. 01-01</b>
<b>DESCRIPTION</b>		<b>DRWN</b>	<b>CHKD</b>	<b>APPD</b>	<b>DATE</b>			<b>DRWG. NO. X 371</b>
<b>REVISIONS</b>								
<b>DRAWN BY</b>	WLW	<b>CHECKED</b>		KSM				
<b>DATE</b>	07-03-18	<b>APPROVED</b>						