



CITY OF DETROIT
DEPARTMENT OF PUBLIC WORKS
CITY ENGINEERING DIVISION

COLEMAN A. YOUNG MUNICIPAL CENTER
2 WOODWARD AVE. SUITE 601
DETROIT, MICHIGAN 48226
PHONE: (313) 224-3949 • TTY:711
FAX: (313) 224-3471
WWW.DETROITMI.GOV

April 22nd, 2020

Petitioner,

RE: Petition No. x371

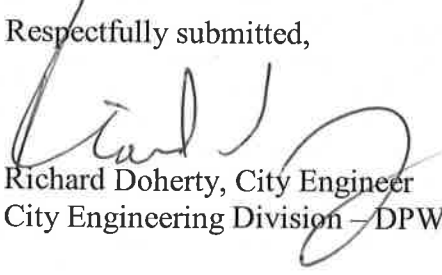
Petition No. x371 The Detroit Public Schools Community District, request to encroach within the vacated Henry Street, between Second Blvd. and Third Avenue, with a concrete foundation and flag pole.

The petition was referred to the City Engineering Division – DPW for investigation (utility review) and report. This is our report.

The review of petition x371 has concluded that per petition x4231, approved May 12th 2004, the segment of Henry Street has been vacated and is now part and parcel with the parcels owned by the Detroit Public School Community District. Therefore it is unnecessary to obtain City Council approval.

The Department of Public Works, City Engineering Division denies this petition request. Please receive and file this report for you reference.

Respectfully submitted,


Richard Doherty, City Engineer
City Engineering Division – DPW

JMK/

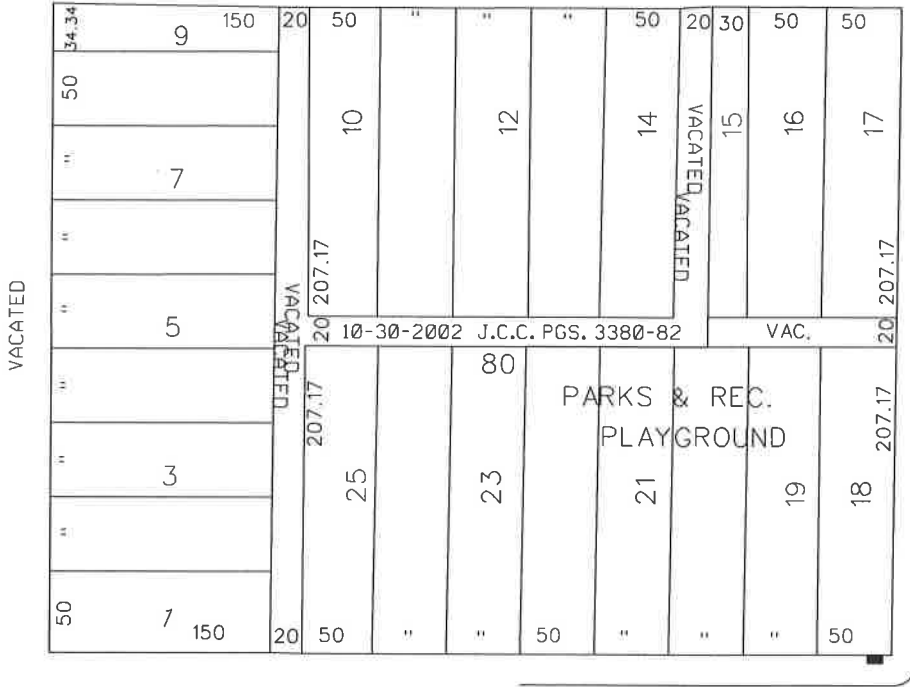
Cc: Ron Brundidge, Director – DPW
Mayor's Office – City Council Liaison

PETITION NO. 371
 THE DETROIT PUBLIC SCHOOLS COMMUNITY DISTRICT
 C/O GIFFELS WEBSTER
 28 W. ADAMS, SUITE 1200
 DETROIT, MICHIGAN 48226
 C/O MICHAEL MARKS P.E.
 PHONE NO. 313 962-4442



LEDYARD ST. 100 FT. WD.

THIRD AVE. 70 FT. WD.

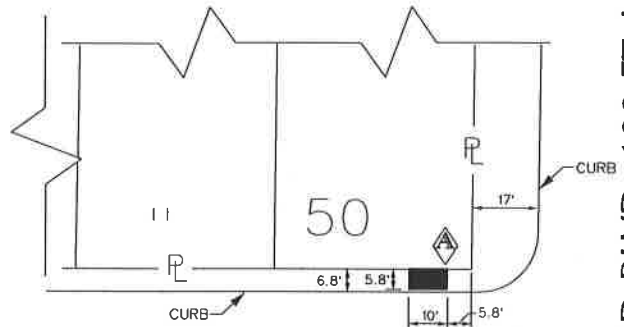


SECOND BLVD. 100 FT. WD.

HENRY ST. 100 FT. WD.

EASEMENT

"REVISED"



HENRY ST. 100 FT. WD.
EASEMENT

SECOND BLVD. 100 FT. WD.

- REQUEST ENCROACHMENT
 (With Concrete Foundation and Flag Pole)

(FOR OFFICE USE ONLY)

CARTO 29 E

B					
A	PROPERTY LINE ON HENRY ST. WAS IN THE WRONG PLACE.	WLW	KSM	KSM	10/12/10
DESCRIPTION		DRWN	CHKD	APPD	DATE
REVISIONS					
DRAWN BY	WLW	CHECKED		KSM	
DATE	07-03-18	APPROVED			

**REQUEST ENCROACHMENT
 INTO HENRY
 AT 2501 SECOND BLVD.
 (With Concrete Foundation and Flag Pole)**

CITY OF DETROIT CITY ENGINEERING DEPARTMENT SURVEY BUREAU	
JOB NO.	01-01
DRWG. NO.	X 371