

City of Detroit
OFFICE OF THE CITY CLERK

Janice M. Winfrey
City Clerk

Vivian A. Hudson
Deputy City Clerk

DEPARTMENTAL REFERENCE COMMUNICATION

Thursday, May 24, 2018

To: The Department or Commission Listed Below

From: Janice M. Winfrey, Detroit City Clerk

The following petition is herewith referred to you for report and recommendation to the City Council.

In accordance with that body's directive, kindly return the same with your report in duplicate within four (4) weeks.

PLANNING AND DEVELOPMENT DEPARTMENT DPW - CITY ENGINEERING DIVISION

364 *620 Webward Building LLC, request to vacate public alley located bounded by Woodward, Congress, Bates and Cadillac Square.*



May 16, 2018

HAND DELIVER

**Honorable Detroit City Council
C/o Detroit City Clerk
200 Coleman A. Young Municipal Center
2 Woodward Avenue
Detroit, Michigan 48226**

RE: Giffels Webster - Request to vacate a public alley.

Giffels Webster, 28 W. Adams, Suite 1200, Detroit, Michigan 48226 on behalf of 620 Webward Building LLC, 630 Woodward Ave., Detroit, Michigan, 48226 respectfully requests that the City of Detroit vacate (outright) the following public alley:

- The public alley in the block bounded by Woodward Avenue (variable width), Congress Street (60 feet wide), Bates Street (60 feet wide) and Cadillac Square (200 feet wide) except the eastern 120 feet of the northernmost alley parallel with Cadillac Square.

Limits of the requested easement can be found in the attachment, enclosed herein.

Giffels Webster has been asked to facilitate the requested easement. If you should have any questions, please do not hesitate to contact me at (P) 313.962.4442 (M) 313.980.1469 or mmarks@giffelswebster.com.

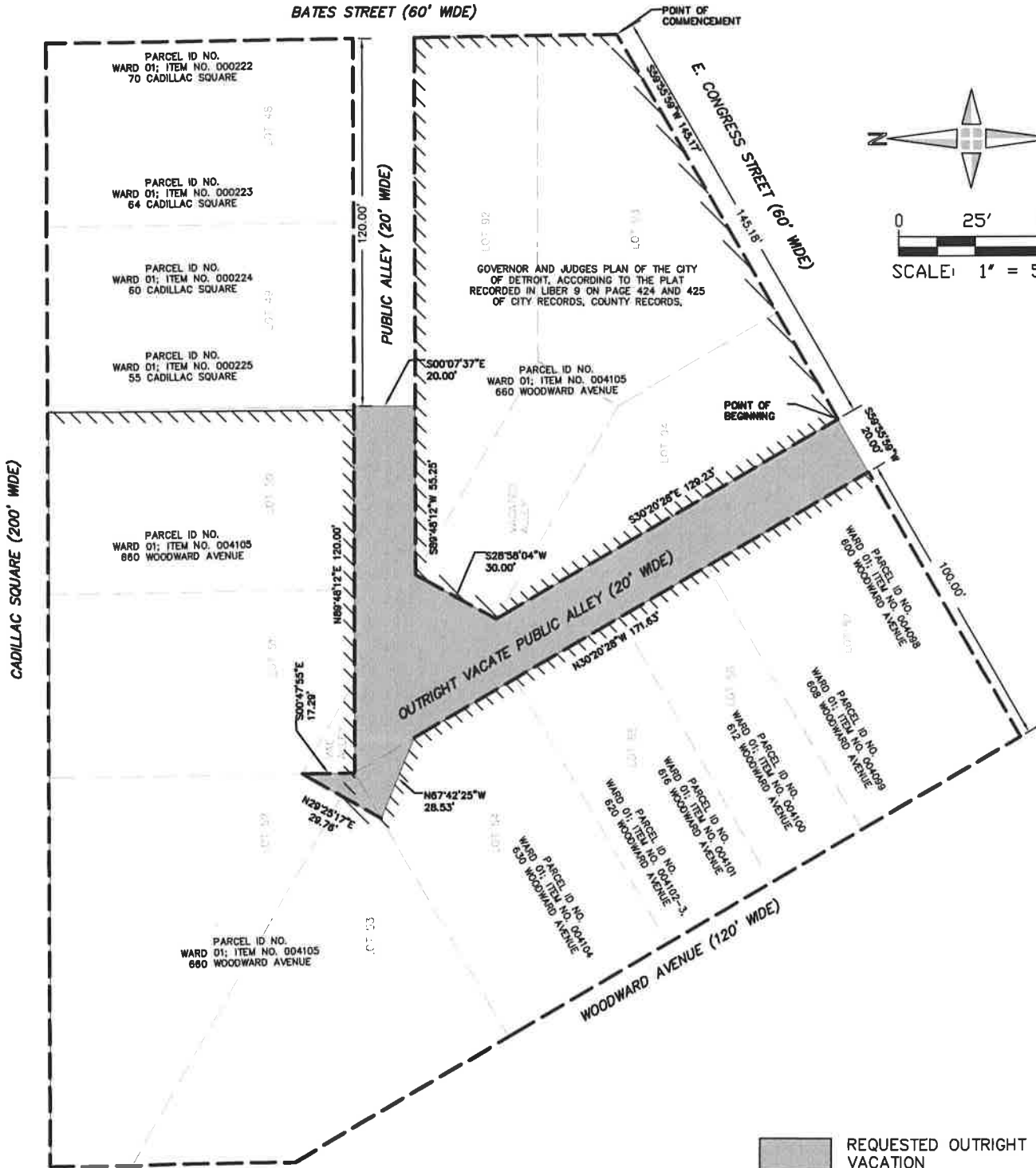
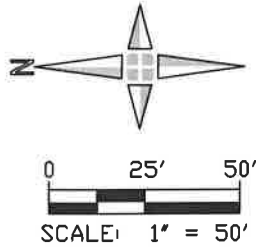
Respectfully,

A handwritten signature in blue ink, appearing to read "Michael Marks".

Michael Marks P.E.,
Partner
Giffels Webster

CITY CLERK 17 MAY 2018 PM1:17

FIRST NATIONAL BUILDING ALLEY VACATION 5/16/2018



2018-05-24

364

364 *Petition of 620 Webward Building
LLC, request to vacate public alley
located bounded by Woodward,
Congress, Bates and Cadillac Square.*

REFERRED TO THE FOLLOWING DEPARTMENT(S)

PLANNING AND DEVELOPMENT DEPARTMENT DPW -
CITY ENGINEERING DIVISION