

PETITION NO. 283  
 SME  
 43980 PLYMOUTH OAKS BLVD.  
 PLYMOUTH, MICHIGAN 48170  
 C/O KIRT ANDERSEN P.E.  
 PHONE NO. 734 454-9900 EXT. 1157

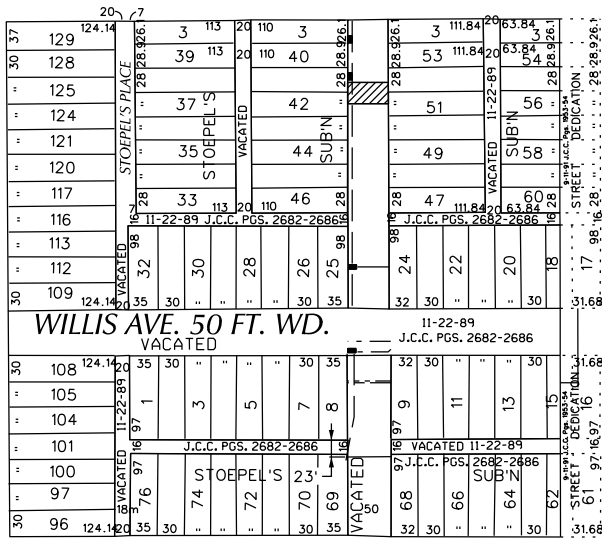


CANFIELD AVE. 60 FT. WD.

CANFIELD AVE. 60 FT. WD.

RIOPELLE ST. 50 FT. WD.

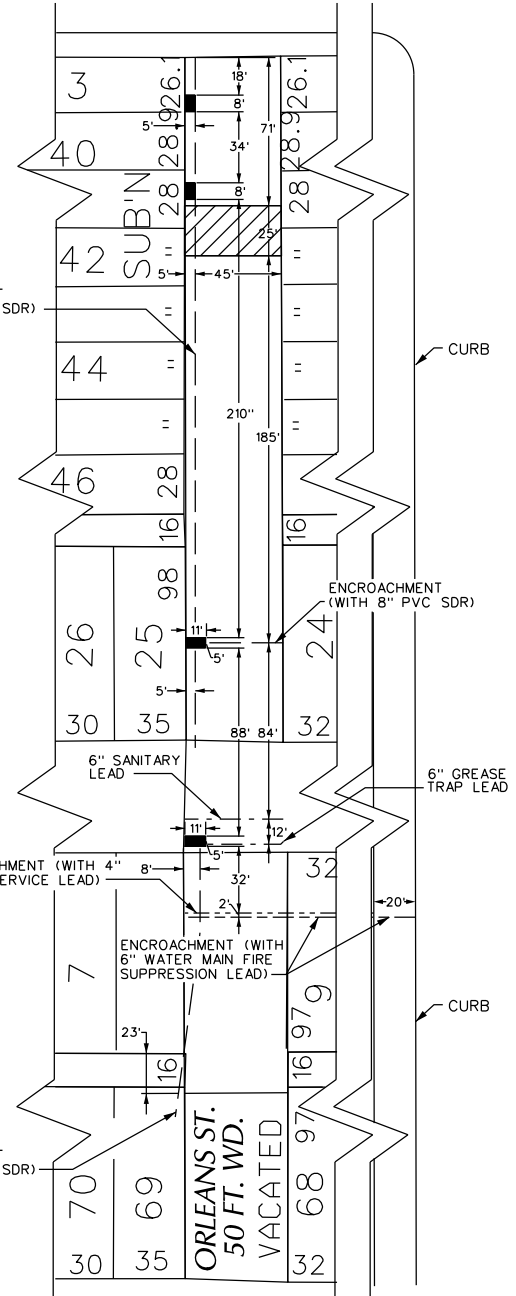
VACATED



SUPERIOR ST.  
 50 FT. WD.  
 VACATED

ORLEANS ST.  
 50 FT. WD.

DEQUINDRE ST. 78 FT. WD.



DEQUINDRE ST. 78 FT. WD.



- REQUEST ENCROACHMENT  
 (With Concrete Ramp)



- REQUEST ENCROACHMENT  
 (With Stair Wells)

(FOR OFFICE USE ONLY)

CARTO 40 D

REQUEST ENCROACHMENT  
 A PORTION OF ORLEANS ST. 50 FT. WD.  
 AND DEQUINDRE ST. 78 FT. WD.  
 IN THE AREA BOUND BY  
 SUPERIOR, RIOPELLE ST., CANFIELD AVE.  
 AND DEQUINDRE ST.

CITY OF DETROIT  
 CITY ENGINEERING DEPARTMENT  
 SURVEY BUREAU

B					
A					
DESCRIPTION	DRWN	CHKD	APPD	DATE	
REVISIONS					
DRAWN BY	WLW	CHECKED	KSM		
DATE	05-08-18	APPROVED			

JOB NO. 01-01  
 DRWG. NO. X 283