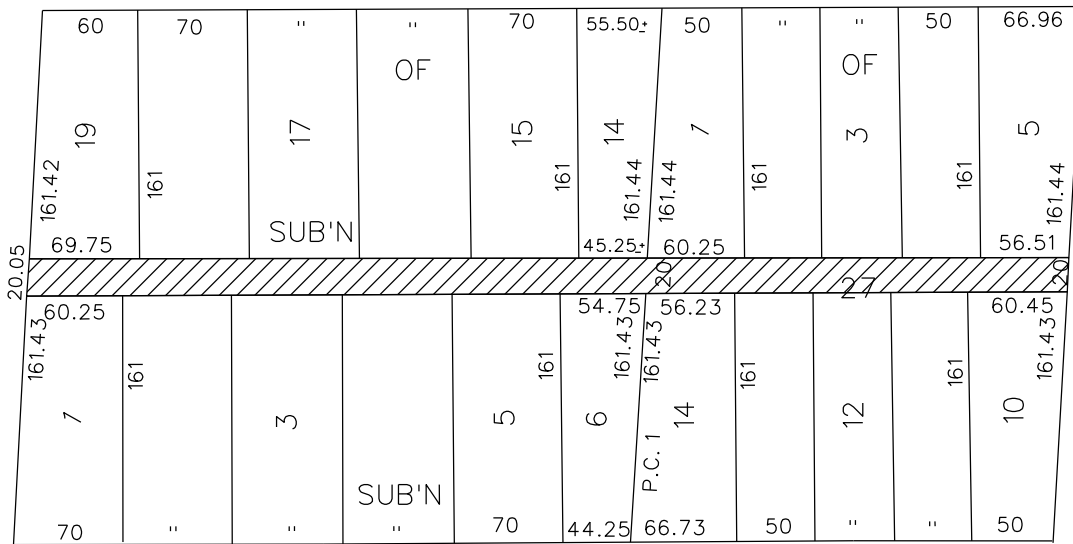


PETITION NO. 248
 COLLEGE FOR CREATIVE STUDIES
 C/O CLARK HILL
 500 WOODWARD AVE. SUITE 3500
 DETROIT, MICHIGAN 48226
 C/O EMILY BALDWIN
 PHONE NO. 313 965-8300



FERRY AVE. 80 FT. WD.

JOHN R. ST. 60 FT. WD.



BRUSH ST. 60 FT. WD.

KIRBY AVE. 80 FT. WD.

VACATED



- CONVERSION TO EASEMENT

(FOR OFFICE USE ONLY)

CARTO 30 A

B						CONVERSION TO EASEMENT THE EAST/WEST PUBLIC ALLEY, VARIOUS WIDTHS IN THE BLOCK BOUND BY FERRY, KIRBY AVE., BRUSH AND JOHN R. ST.	CITY OF DETROIT CITY ENGINEERING DEPARTMENT SURVEY BUREAU
A							JOB NO. 01-01
DESCRIPTION		DRWN	CHKD	APPD	DATE		DRWG. NO. X 248
DRAWN BY		CHECKED		DATE			
WLW		KSM		05-23-18			
DATE		APPROVED					