

City of Detroit
OFFICE OF THE CITY CLERK

Janice M. Winfrey
City Clerk

Vivian A. Hudson
Deputy City Clerk

DEPARTMENTAL REFERENCE COMMUNICATION

Monday, March 05, 2018

To: The Department or Commission Listed Below

From: Janice M. Winfrey, Detroit City Clerk

The following petition is herewith referred to you for report and recommendation to the City Council.

In accordance with that body's directive, kindly return the same with your report in duplicate within four (4) weeks.

PLANNING AND DEVELOPMENT DEPARTMENT DPW - CITY ENGINEERING DIVISION

206 *Amazing Grace International, request the vacation of a street located on the southwest side of 24699 Grand River.*

122c



AmazingGRACE
International Inc.

24699 Grand River Ave. | Detroit, MI 48219 | (313) 255-0129/313-434-0267
www.amazinggracedetroit.org

2/26/2018

Honorable City Council
Attn: Office of City Clerk
200 Coleman A. Young Municipal Center
Detroit, MI 48226

OFFICE OF THE
DETROIT CITY CLERK
2018 MAR -2 P 3:11

Honorable City Council,

This letter is coming from the office of our senior, Pastor Timothy Reese of Amazing Grace International. We are requesting permission to close off the street at the entrance of our parking lot on the southwest side of our building @ Albert Street. Currently, with the street being open, cars drive through our parking lot, from Salem St. and also Five Pointes St. via Albert St. We also have an additional parking lot that is not connected to the southwest parking with an entrance from an alley that you can only enter from Grand River Ave. where vehicles drive across the sidewalk to access the Albert St and then Five Points St.

Though this is a convenience for them, it has caused issues for the church and our members. The main issue is safety and crime. With the cars driving in a wreckless manor (and clear access) through both parking lots, there is always the risk of accidents to the general pedestrian public, our members and possible theft to the church building and member vehicles in the parking lot. Another issue is the ground maintenance. The cars drive over the concrete sidewalk and a portion of the landscaping in an effort to get to Salem St. and Five Pointes St. Please see the attached photos for review.

If we can block the end of Albert Street off, this will provide safer areas around our church and prevent further damages to our property.

Your consideration of our request is greatly appreciated. If you have any questions or concerns, please feel free to contact us via phone at 313-434-0267, or email at business@amazinggracedetroit.org or pastortim@amazinggracedetroit.org.

Thank you,

Pastor Tim R Reese
Senior Pastor

"We don't want anything from you, but everything for you."

2/26/2018



Looking south onto
Albert St from our
Southwest parking lot



Looking north from
Albert St. heading into
the southwest parking lot
(Five Pointes St.) is directly
behind me, taking this photo



Driveway easement from
Salem St heading into
the southwest parking
lot

2/26/2018



STANDING IN THE SOUTHWEST (SW) PARKING LOT, LOOKING AT THE NORTHWEST PARKING (NW) PARKING LOT



LOOKING @ THE NW PARKING LOT, THIS IS WHERE UNKNOWN DRIVERS DRIVE ONTO TO THE SIDEWALK TO CUT THROUGH - FROM THE ALLEY-WAY TO THE CSU PARKING LOT TO GET TO SIDE STREET, (SALEM'S FIVE POINTS ST)



CLOSE UP VIEW OF THE NORTHWEST PARKING LOT

2/26/2018



VEHICLES ENTER Albert
St FROM/OFF OF
GRAND RIVER AVE;



VEHICLES ENTER the
Alley way, and then
INTO OUR PARKING
lot



VEHICLES ALSO EXIT
FROM the Alley-way
to cut to
GRAND RIVER AVE..

2/26/2018



VEHICLES ENTER FROM
THE ALLEY-WAY INTO
THE (NW) NORTHWEST
PARKING LOT & CUT
ACROSS OUR SIDEWALK
TO GET TO FIVE POINTS
& SALEM ST.



VIEW LOOKING AT
THE ALLEY-WAY THROUGH
TO FIVE POINTS.

IF YOU WERE TO MAKE A ~~RIGHT~~ LEFT
TURN, YOU WOULD BE ENTERING OUR
(NW) NORTHWEST PARKING LOT.

2018-03-05

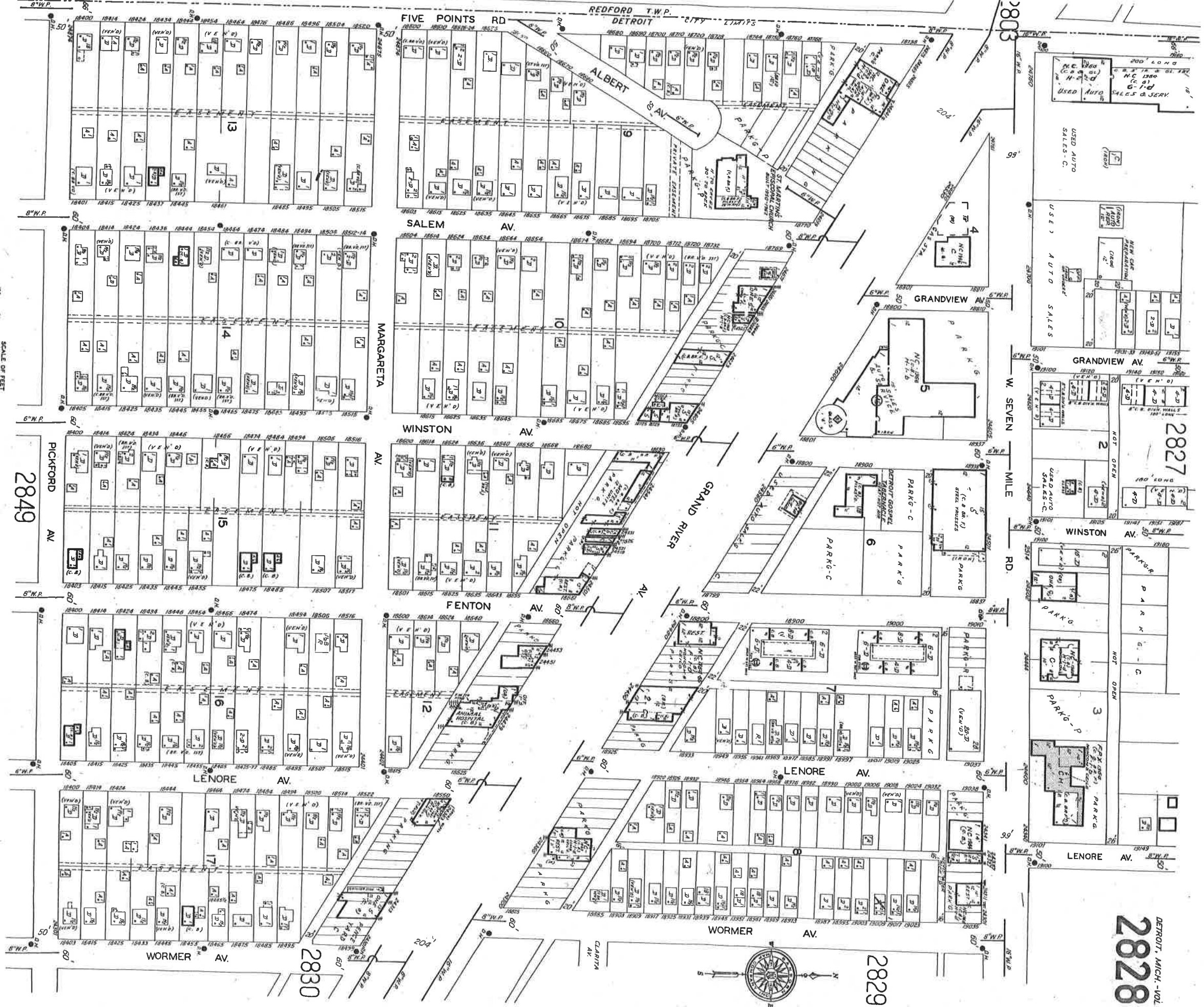
206

Petition of Amazing Grace International, request the vacation of a street located on the southwest side of 24699 Grand River.

REFERRED TO THE FOLLOWING DEPARTMENT(S)

PLANNING AND DEVELOPMENT DEPARTMENT DPW -
CITY ENGINEERING DIVISION

SCALE OF FEET
0 50 100
COPYRIGHT SANBORN MAP COMPANY, INC.



PICKFORD AV
2849

2830

2829

2828

2827

DETROIT, MICH. - VOL. 28