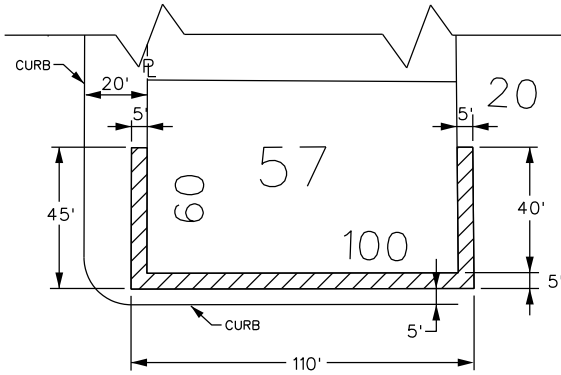


PETITION NO. 205
 BEDROCK MANAGEMENT LLC
 C/O GIFFELS WEBSTER
 28 W. ADAMS, SUITE 1200
 DETROIT, MICHIGAN 48226
 C/O MICHAEL MARKS P.E.
 PHONE NO. 313 962-4442

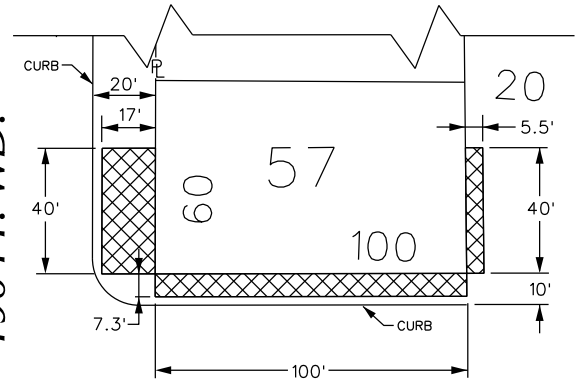


WOODWARD AVE.
 190 FT. WD.



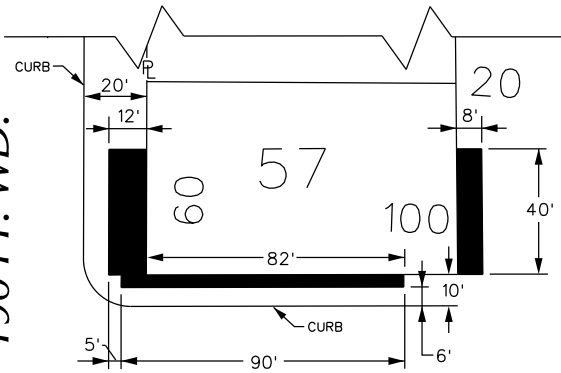
CONGRESS ST. 60 FT. WD.

WOODWARD AVE.
 190 FT. WD.



CONGRESS ST. 60 FT. WD.

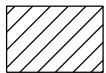
WOODWARD AVE.
 190 FT. WD.



CONGRESS ST. 60 FT. WD.



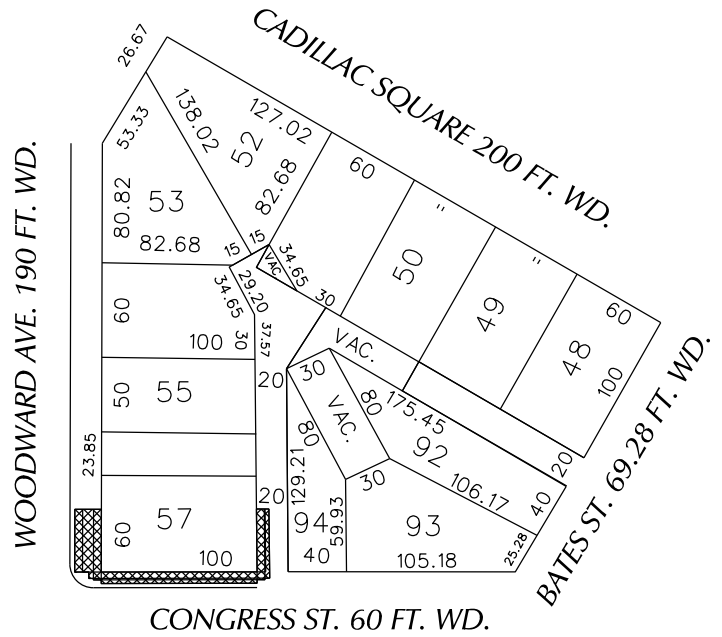
- REQUEST ENCROACHMENT
 (Below Ground 0' to -11.5')



- REQUEST ENCROACHMENT
 (Above Ground 8.5' to 172')



- REQUEST ENCROACHMENT
 (At Ground Level 0' to 8.5')



CONGRESS ST. 60 FT. WD.

CARTO 28 F

(FOR OFFICE USE ONLY)

B					
A					
DESCRIPTION		DRWN	CHKD	APPD	DATE
REVISIONS					
DRAWN BY	WLW	CHECKED		KSM	
DATE	04-19-18	APPROVED			

REQUEST ENCROACHMENT
 INTO WOODWARD, CONGRESS AND A
 PORTION OF THE NORTH/SOUTH PUBLIC ALLEY
 AT 600 WOODWARD AVE.

CITY OF DETROIT
 CITY ENGINEERING DEPARTMENT
 SURVEY BUREAU

JOB NO. 01-01

DRWG. NO. X 205