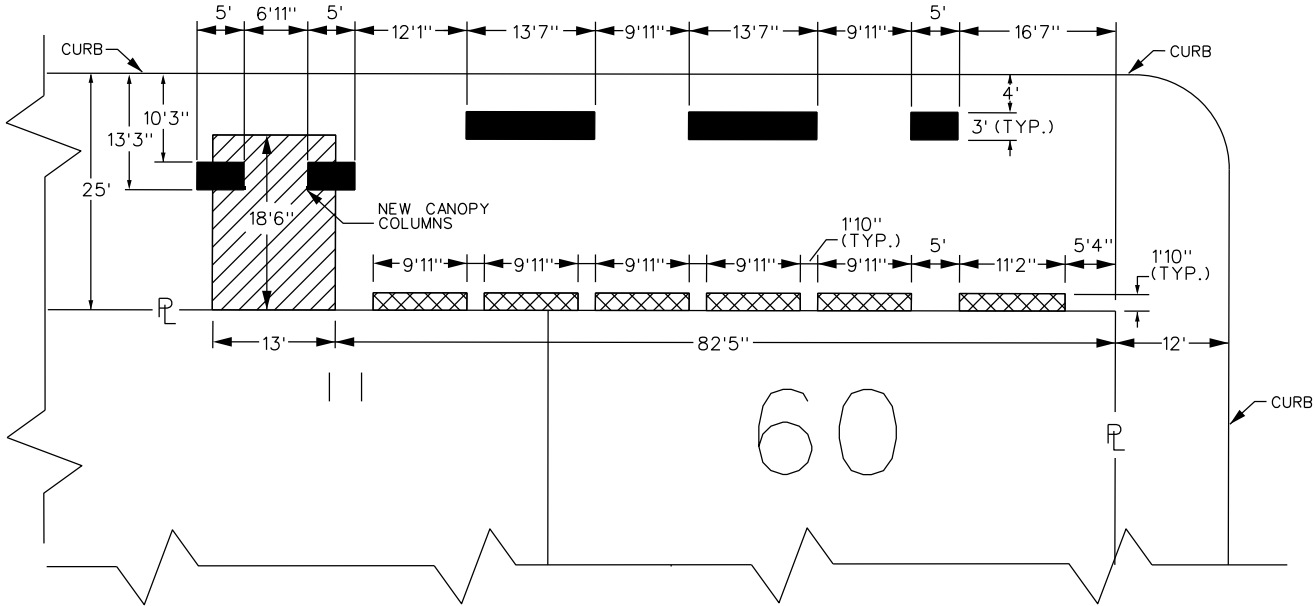


PETITION NO. 162
 BARBAT HOLDINGS, LLC
 7499 MIDDLEBELT RD.
 WEST BLOOMFIELD, MICHIGAN 48322
 C/O JOE BARBAT
 PHONE NO. 248 426-2109



BAGLEY AVE. 120 FT. WD.

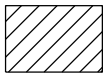
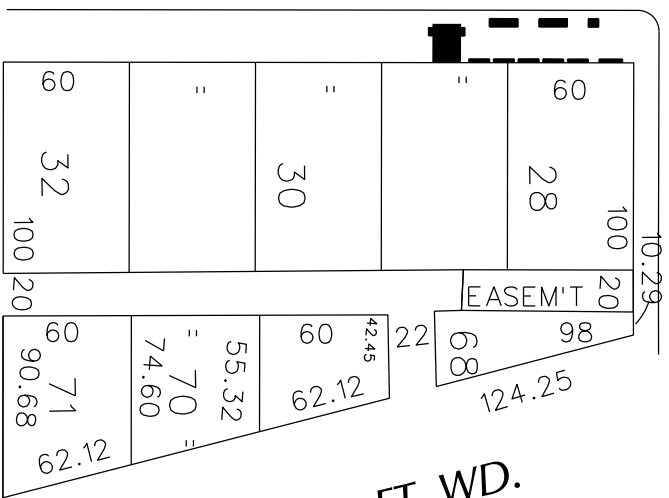


CLIFFORD AVE. 60 FT. WD.

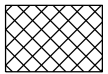
BAGLEY AVE. 120 FT. WD.

GD. RIVER AVE. 60 FT. WD.

CLIFFORD AVE. 60 FT. WD.



- REQUEST ENCROACHMENT
 (With Entry Canopy
 10'-8" Above Grade)



- REQUEST ENCROACHMENT
 (With Window Canopies
 10'-4" Above Grade)



- REQUEST ENCROACHMENT
 (With New Planters)

(FOR OFFICE USE ONLY)

CARTO 28 B

B					
A					
DESCRIPTION		DRWN	CHKD	APPD	DATE
REVISIONS					
DRAWN BY	WLW	CHECKED	KSM		
DATE	04-26-19	APPROVED			

REQUEST ENCROACHMENT
 INTO BAGLEY
 AT 415 CLIFFORD
 (With Entry and Window Canopies
 and New Planters)

CITY OF DETROIT
 CITY ENGINEERING DEPARTMENT
 SURVEY BUREAU
 JOB NO. 01-01
 DRWG. NO. X 162