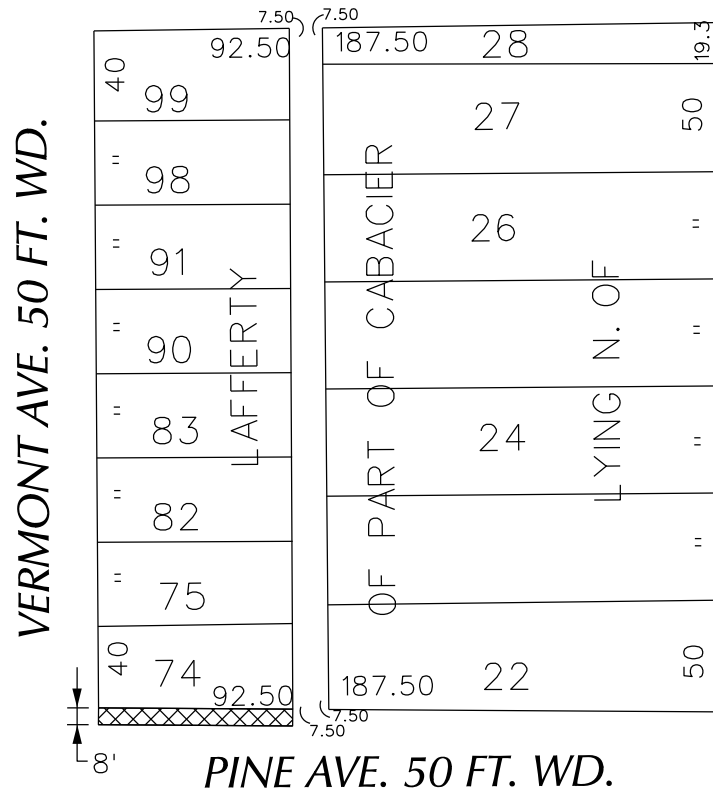


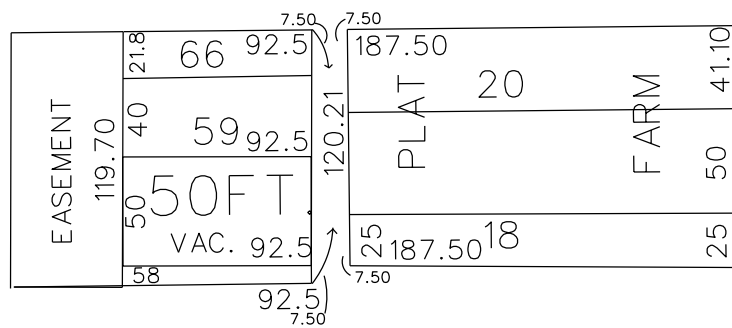
PETITION NO. 146
 CORKTOWN HOUSING LLC
 211 W. FORT ST. SUITE 720
 DETROIT, MICHIGAN 48226
 C/O KATÉ BAKER
 PHONE NO. 313 237-1001



SPRUCE ST. 50 FT. WD.



OTTAWA ST. 50 FT. WD.
 VAC.



FISHER FWY. (I-75)

 - OUTRIGHT VACATION

(FOR OFFICE USE ONLY)

CARTO 19 F

B						OUTRIGHT VACATION A PORTION OF PINE AVE., 8 FT. WD. IN THE AREA BOUND BY VERMONT AVE., SPRUCE ST., ROSA PARKS BLVD. AND FISHER FWY.	CITY OF DETROIT CITY ENGINEERING DEPARTMENT SURVEY BUREAU	
A								
DESCRIPTION		DRWN	CHKD	APPD	DATE			JOB NO. 01-01
DRAWN BY WLW		CHECKED KSM		DATE 03-23-18				DRWG. NO. X 146