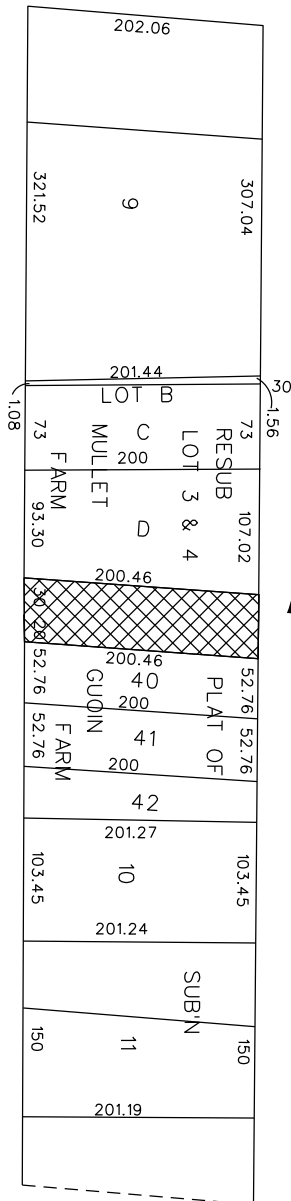


PETITION NO. 141  
 PEA INC.  
 2430 ROCHESTER CT., SUITE 100  
 TROY, MICHIGAN 48083  
 C/O ÉMIL S. BUNEK III, P.E.  
 PHONE NO. 248 689-9090



RIVARD ST. 50 FT. WD.

E. JEFFERSON AVE. 120 FT. WD.



E. LARNED ST. 120 FT. WD.

RUSSELL ST.  
 50 FT. WD.  
 EASEMENT

RIOPELLE ST. 39.07 FT. WD.  
 PUB. EASE.



- OUTRIGHT VACATION

(FOR OFFICE USE ONLY)

CARTO 38 D

B					
A					
DESCRIPTION	DRWN	CHKD	APPD	DATE	
REVISIONS					
DRAWN BY	WLW	CHECKED	KSM		
DATE	04-17-18	APPROVED			

REQUEST TO OUTRIGHT VACATE  
 RUSSELL ST. 50 FT. WD.  
 BETWEEN  
 E. JEFFERSON AVE. AND E. LARNED ST.

CITY OF DETROIT CITY ENGINEERING DEPARTMENT SURVEY BUREAU	
JOB NO.	01-01
DRWG. NO.	X 141