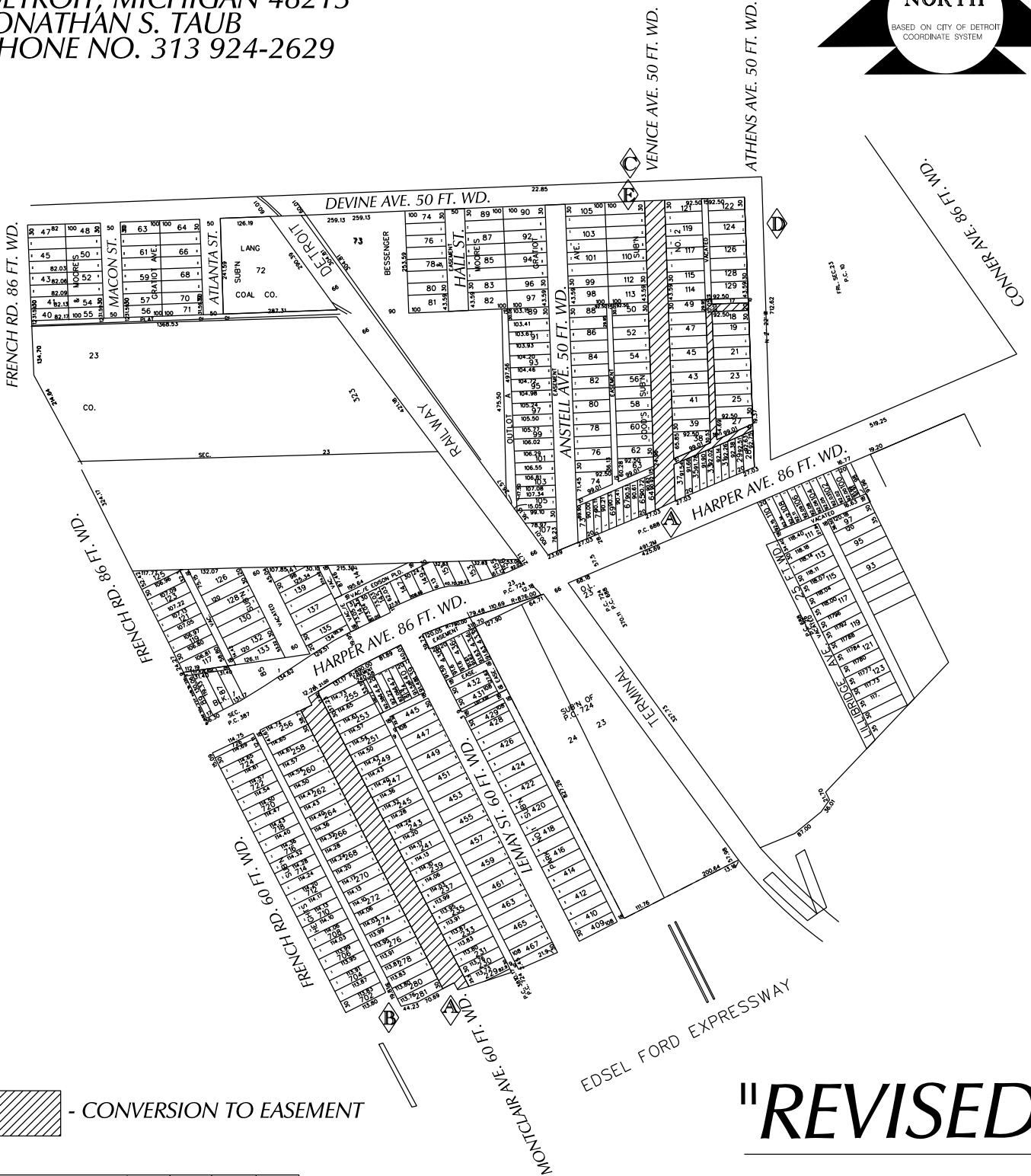


PETITION NO. 140
 PVS CHEMICALS, INC
 10900 HARPER AVE.
 DETROIT, MICHIGAN 48213
 JONATHAN S. TAUB
 PHONE NO. 313 924-2629



"REVISED"

E	REMOVING 20' X 40' DEDICATED AREA FOR VEHICLE MANEUVERING.	WLW	KSM	KSM	1/14/19
D	REMOVING CONVERSION TO EASEMENT FROM ATHENS AVE.	WLW	KSM	KSM	1/14/19
C	20' X 40' DEDICATED AREA FOR VEHICLE MANEUVERING.	WLW	KSM	KSM	7/25/18
B	REMOVING CONVERSION TO EASEMENT FROM ALLEYWAY	WLW	KSM	KSM	6/01/18
A	CHANGING FROM OUTRIGHT VACATION TO CONVERSION TO EASEMENT	WLW	KSM	KSM	3/20/18
DESCRIPTION		DRWN	CHKD	APPD	DATE
REVISIONS					
DRAWN BY	WLW	CHECKED		KSM	
DATE	03-15-18	APPROVED			

(FOR OFFICE USE ONLY)

CARTO 57 B & E

**CONVERSION TO EASEMENT
 VARIOUS PUBLIC STREETS AND ALLEYS
 VARIOUS WIDTHS
 IN THE AREA BOUND BY
 FRENCH RD, DEVINE AND CONNER AVE.
 AND EDESEL FORD FWY.**

**CITY OF DETROIT
 CITY ENGINEERING DEPARTMENT
 SURVEY BUREAU**

JOB NO. 01-01

DRWG. NO. X 140