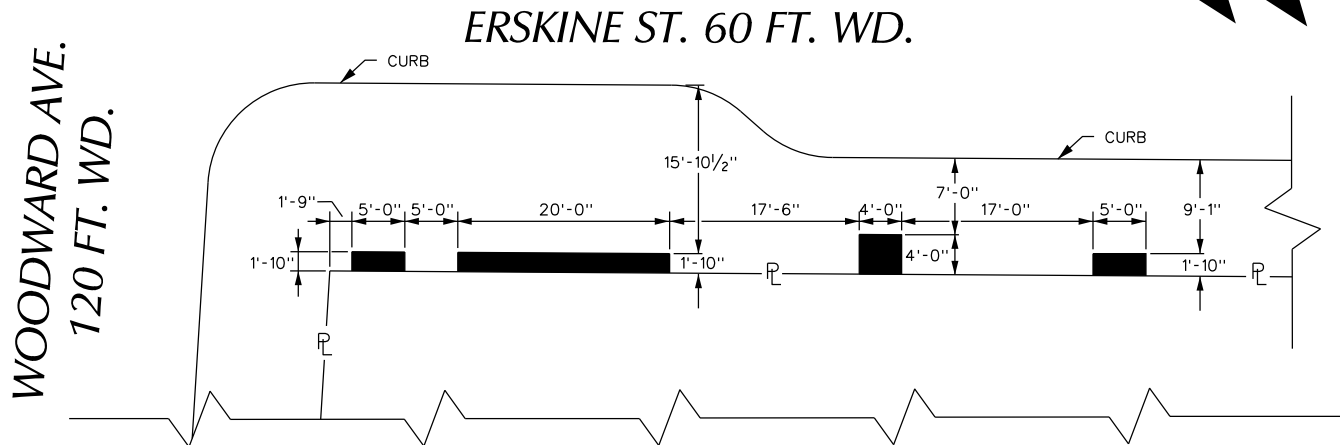
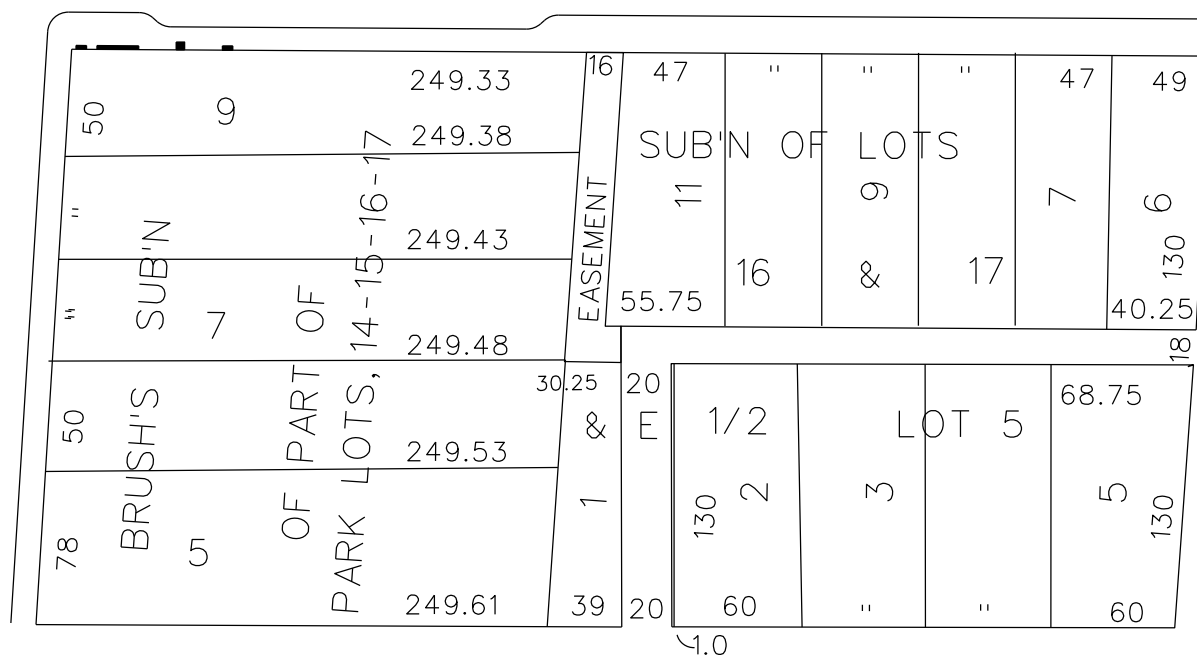


PETITION NO. 116  
 RONALD ROMAN  
 275 E. FRANK ST.  
 BIRMINGHAM, MICHIGAN 48009  
 C/O DARRELL J. DINGES  
 PHONE NO. 248 723-5790



WOODWARD AVE. 120 FT. WD.

ERSKINE ST. 60 FT. WD.



WATSON ST. 48 FT. WD.



- REQUEST ENCROACHMENT  
 (With Outdoor Planters)

(FOR OFFICE USE ONLY)

CARTO 29 A

B					
A					
DESCRIPTION		DRWN	CHKD	APPD	DATE
REVISIONS					
DRAWN BY	WLW	CHECKED	KSM		
DATE	03-29-18	APPROVED			

REQUEST ENCROACHMENT  
 INTO ERSKINE  
 AT 3150 WOODWARD AVE.  
 (With Outdoor Planters)

CITY OF DETROIT  
 CITY ENGINEERING DEPARTMENT  
 SURVEY BUREAU

JOB NO. 01-01

DRWG. NO. X 116