

ERSKINE STREET
60' RIGHT OF WAY

WOODWARD AVENUE
120' RIGHT OF WAY

1 SITE / FLOOR PLAN
scale: 1/4" = 1'-0"



SITE / FLOOR PLAN

Sheet Number:

A101

Sheet Title:

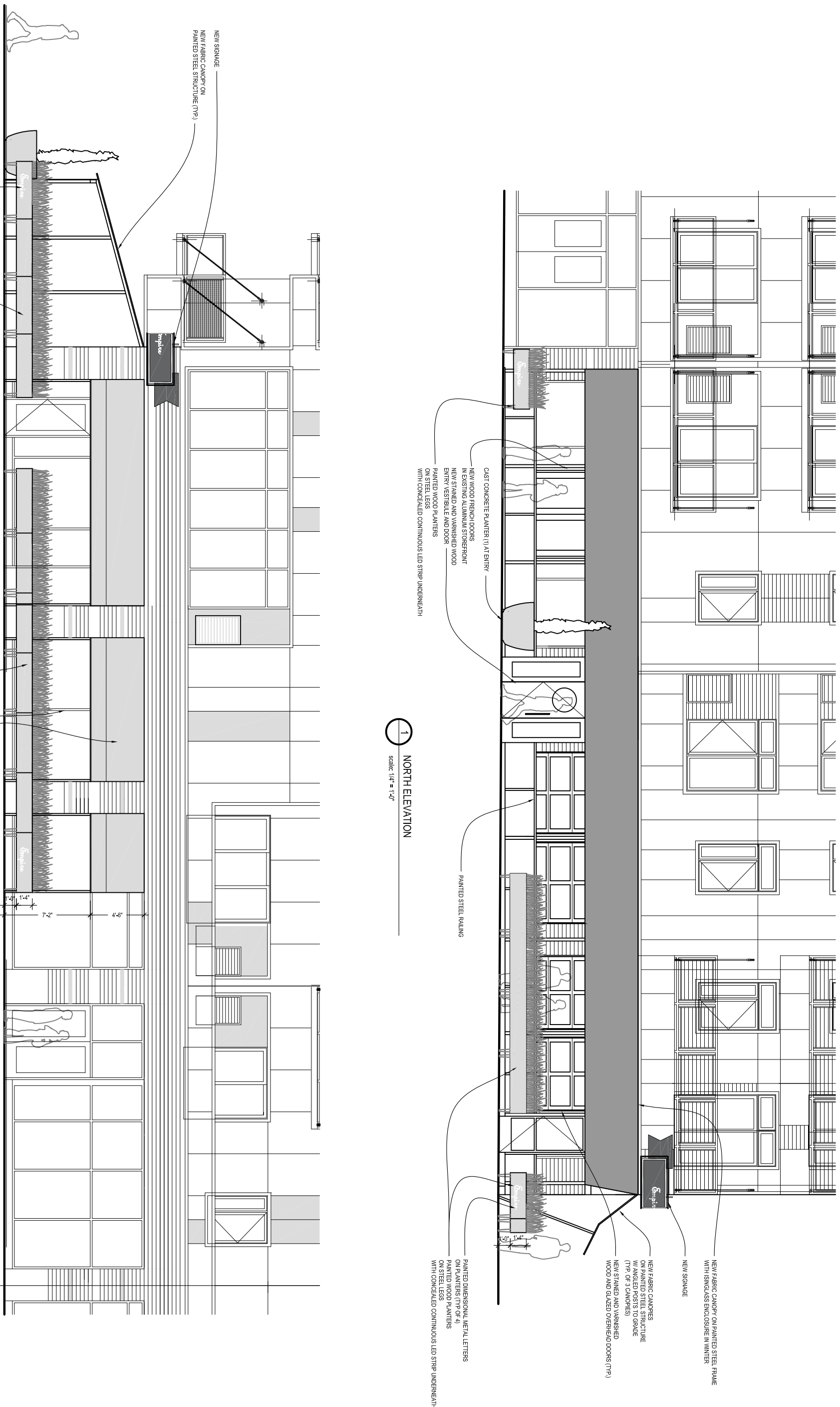
Issue Date:	Revision	Date
REVISION	01.08.2018	
REVISION	03.02.2018	
REVISION	03.07.2018	

Scale:

The Erskine
New Restaurant in The Scott at Brush Park
3150 Woodward Avenue, Detroit, MI 48201

Project:

RON ANDROMAN
architects et al.
275 E. Frank St. Birmingham MI 48009
o) 248.723.5790 f) 248.723.5795



1 NORTH ELEVATION
scale: 1/4" = 1'-0"

2 WEST ELEVATION
scale: 1/4" = 1'-0"

RONANDROMAN
architects et al.
275 E. Frank St. Birmingham MI 48009
o) 248.723.5790 f) 248.723.5795

The Erskine
New Restaurant in The Scott at Brush Park
3150 Woodward Avenue, Detroit, MI 48201

Scale:

CHIC SUBMISSION	10.11.2017
REVISION	03.02.2018
REVISION	03.07.2018

Sheet Title:

EXTERIOR
ELEVATIONS

Sheet Number:

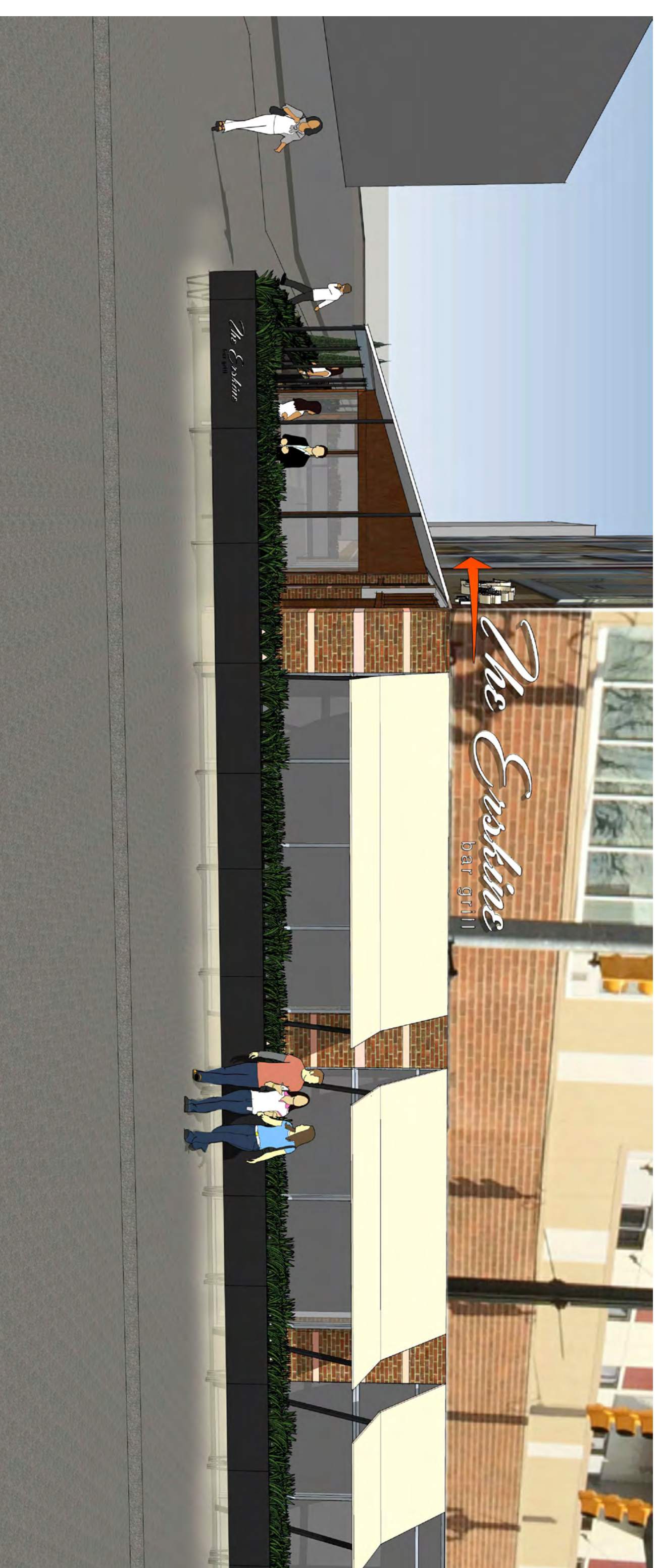
A102



4 PROPOSED ERSKINE VIEW



3 PROPOSED CORNER VIEW



2 PROPOSED WOODWARD VIEW



1 PROPOSED ENTRY



PLANTERS:
CAST CONCRETE - CHARCOAL GRAY



STOREFRONT FRAMING SYSTEM:
CLEAR ANODIZED ALUMINUM TO MATCH EXISTING



NEW AIRLOCK ENTRANCE VESTIBULE:
STAINED WOOD: SHERWIN WILLIAMS "BISTRO WALNUT"



SIGNAGE:
NEON MOUNTED OVER DIMENSIONAL LETTERS



CANOPY FRAMING AND PAINTED PLANTERS:
PAINTED BENJAMIN MOORE "ONYX"



SIGNAGE:
PAINTED BENJAMIN MOORE "ANTIQUE YELLOW"



CANOPY FABRIC:
SERGE FERRARI 502 SATIN
COLOR: CHAMPAGNE



4 WOODWARD & ERSKINE INTERSECTION (SOUTHEAST CORNER)



3 WOODWARD & ERSKINE INTERSECTION (SOUTHEAST CORNER)



2 ERSKINE (NORTH) ELEVATION



1 WOODWARD (WEST) ELEVATION

RONANDROMAN
architects et al.
275 E. Frank St. Birmingham MI 48009
o) 248.723.5790 f) 248.723.5795

Project

Restaurant
New Restaurant in The Scott at Brush Park
3150 Woodward Avenue, Detroit, MI 48201

Seal:

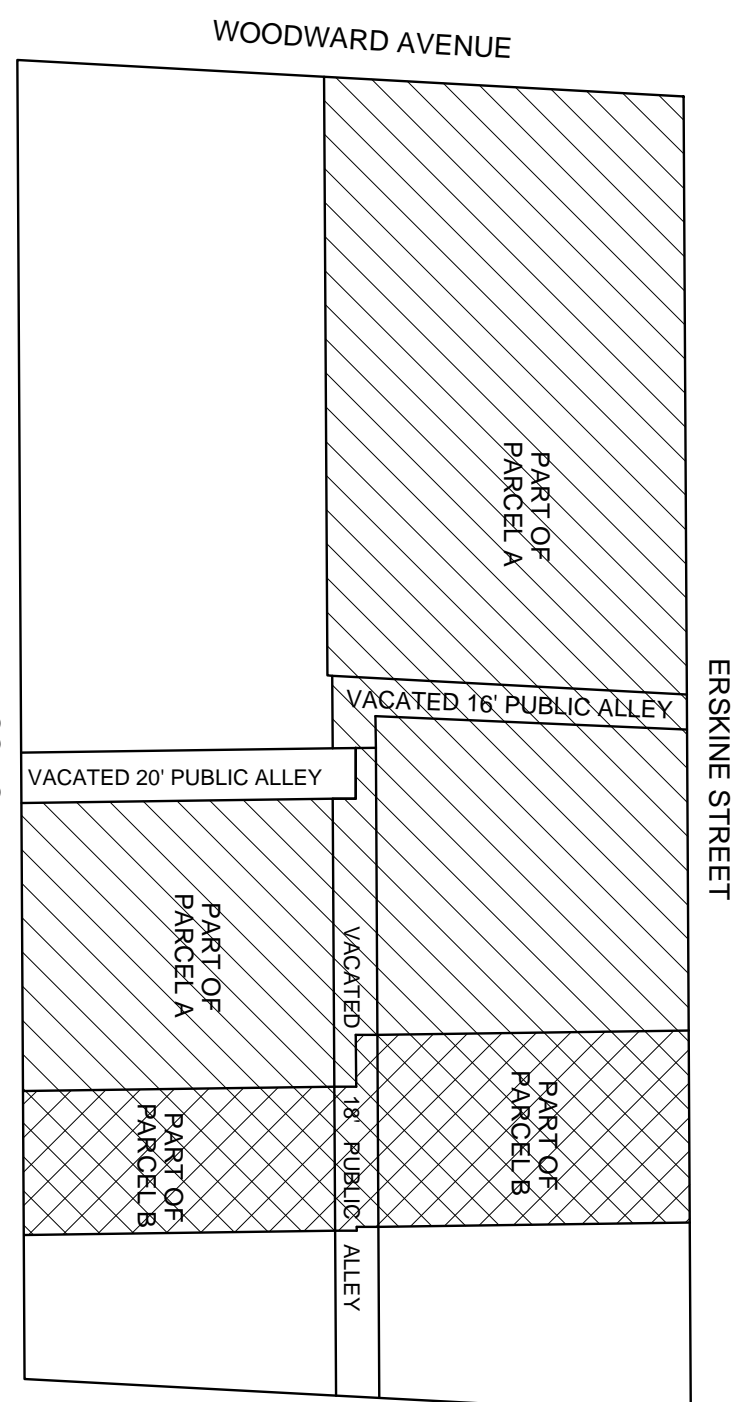
Issue Date
DHCC SUBMISSION 10/20/17

Sheet Title

EXISTING BUILDING
PHOTOGRAPHS

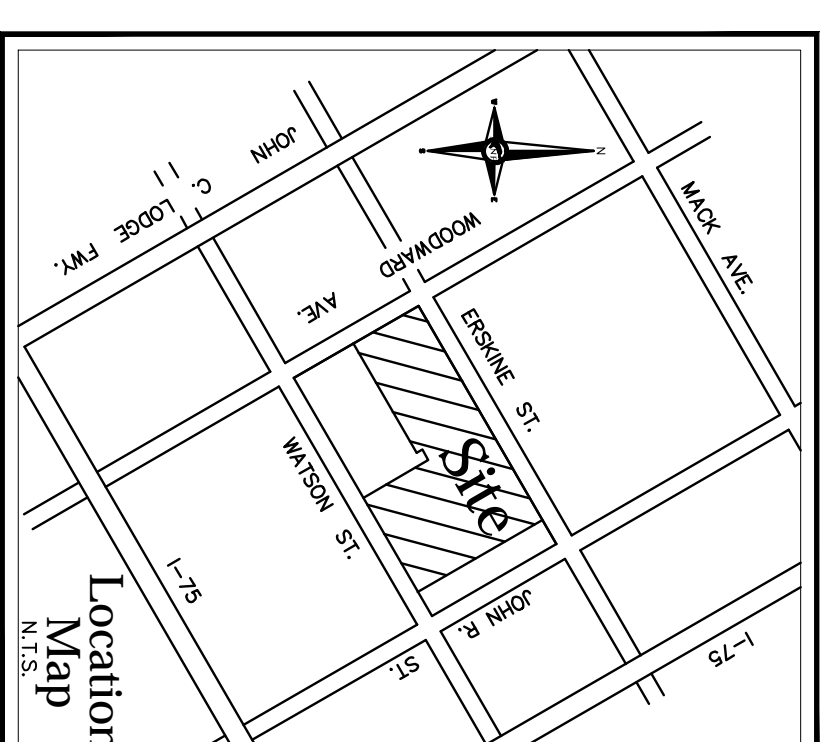
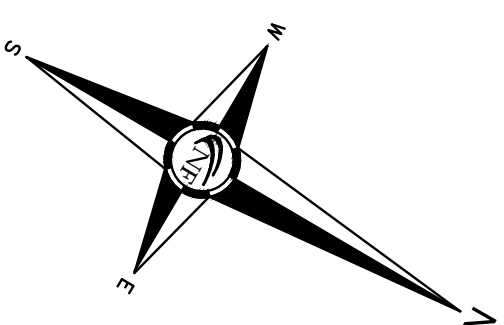
Sheet Number

A105

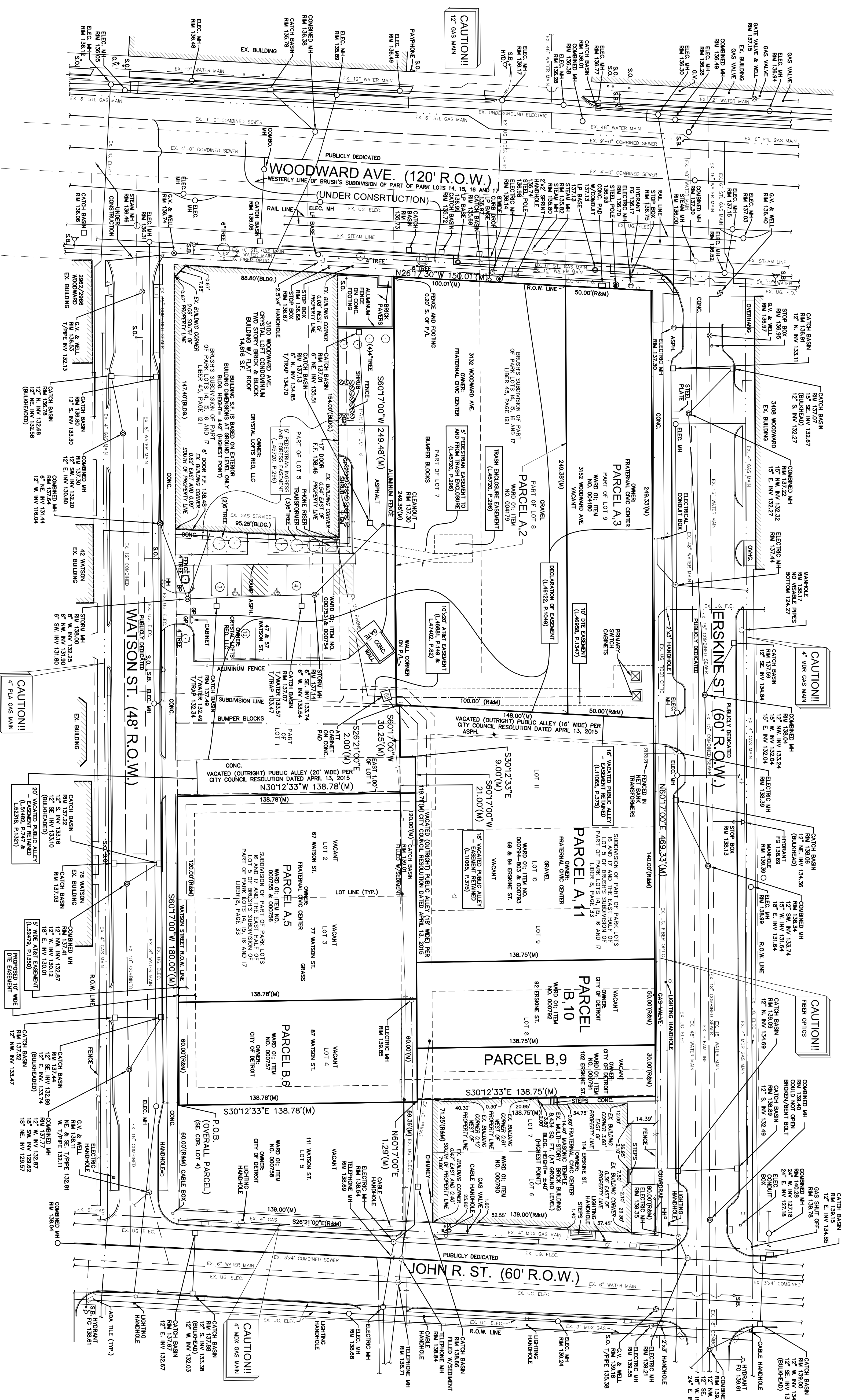


WOODWARD AVENUE
ERSKINE STREET
WATSON STREET
JOHN R. STREET

PARCEL SKETCH
NOT TO SCALE



Location Map



LEGEND	
(Symbol)	MANHOLE
(Symbol)	EXISTING SANITARY SEWER
(Symbol)	HYDRAULIC (HD) GATE VALVE (GV)
(Symbol)	EXISTING SAN. CLEAN OUT
(Symbol)	EXISTING WATER MAIN
(Symbol)	EXISTING STORM SEWER
(Symbol)	EXISTING SPOON SEWER
(Symbol)	EX. R.T. CATCH BASIN
(Symbol)	EXISTING BARRIED CABLES
(Symbol)	EXISTING BARRIED CABLES
(Symbol)	EXISTING GAS MAIN
(Symbol)	EXISTING GAS MAIN
(Symbol)	ASPHALT PAVEMENT
(Symbol)	CONCRETE PAVEMENT
(Symbol)	RECORD
(Symbol)	FOUND IRON
(Symbol)	SET IRON
(Symbol)	DOWNSPOUT
(Symbol)	GLASS POST
(Symbol)	HANDHOLE
(Symbol)	AIR CONDITIONER UNIT
(Symbol)	ELECTRIC CABINET
(Symbol)	STOP BOX
(Symbol)	SHUT OFF
(Symbol)	GAS METER
(Symbol)	UNDERGROUND
(Symbol)	FINISH FLOOR ELEVATION
(Symbol)	TRANSFORMER

Know what's below
Call before you dig

811

REVISIONS:

- 12-15-14 SURVEY ISSUED
- 12-22-14 REVISION PER UPRATED TITLE #1
- 12-29-14 REVISION PER UPRATED TITLE #2
- 12-30-14 REVISION PER UPRATED TITLE #3
- 01-14-15 PD APPROVAL
- 02-10-15 UNDATED PARCELS 7 AND 8
- 02-20-15 REVISION PER UPRATED TITLE #4
- 02-23-15 REVISION PER UPRATED TITLE #5
- 02-23-15 REVISION PER UPRATED TITLE #6
- 02-23-15 REVISION PER UPRATED TITLE #7
- 02-23-15 REVISION CERTIFICATION
- 10-26-15 REVISION PER UPRATED TITLE #8
- 11-10-15 REVISION PER UPRATED TITLE #9

10-26-15 REVISION PER UPRATED TITLE #8
02-23-15 REVISION PER UPRATED TITLE #9

DESIGNED BY:
M. Cattarigi

DRAWN BY:
K. Nawroth

APPROVED BY:
K. Nawroth

DATE:
December 15, 2014

SCALE: 1" = 30'

NFE JOB NO. E326-04

sheet no. 1 of 2

STATE OF MICHIGAN
KENNETH A. NAUROW
PROFESSIONAL SURVEYOR
NO. 35300
LICENSED PROFESSIONAL SURVEYOR

PROJECT
"Erskine Block"
Mixed Use Development
Brush Park Rehabilitation
Project - Detroit, MI

CLIENT
Broder & Sachse
Real Estate Services
260 E. Brown St., Suite 280
Birmingham, MI 48009

Contact: Mario Fernandez
248.647.4100 - Phone
248.647.4180 - Fax

PROJECT LOCATION
Woodward Ave. / John R. St.
/ Erskine St. / Watson St.
Detroit, MI

NOVAK & FRAUS ENGINEERS
6977 Woodward Ave.
Pontiac, MI 48342-5032
Tel. (248) 332-7931
Fax. (248) 332-8257

ENGINEERS
civil Engineers
Land Surveyors
Land Planners

NOVAK & FRAUS ENGINEERS

