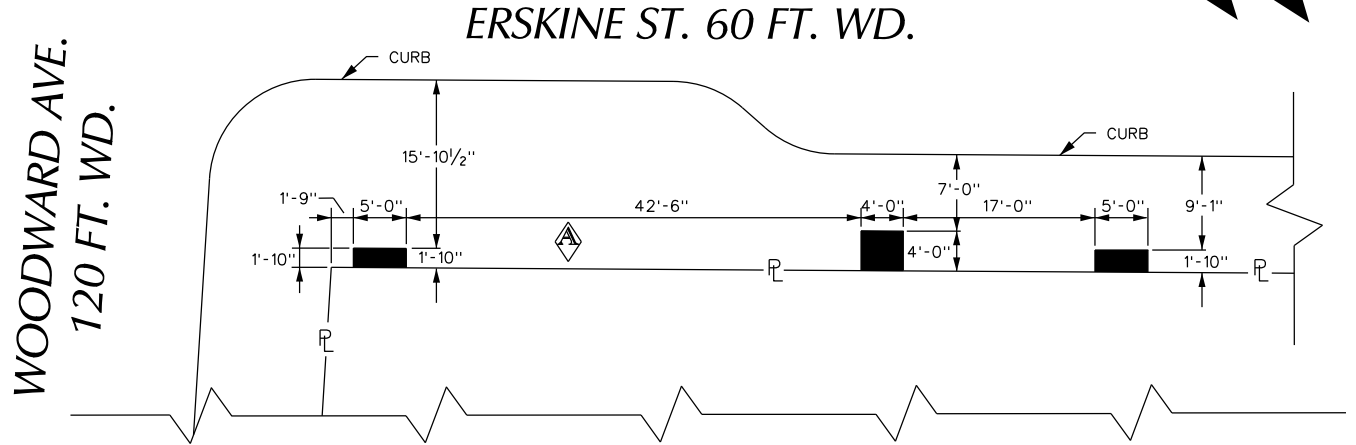


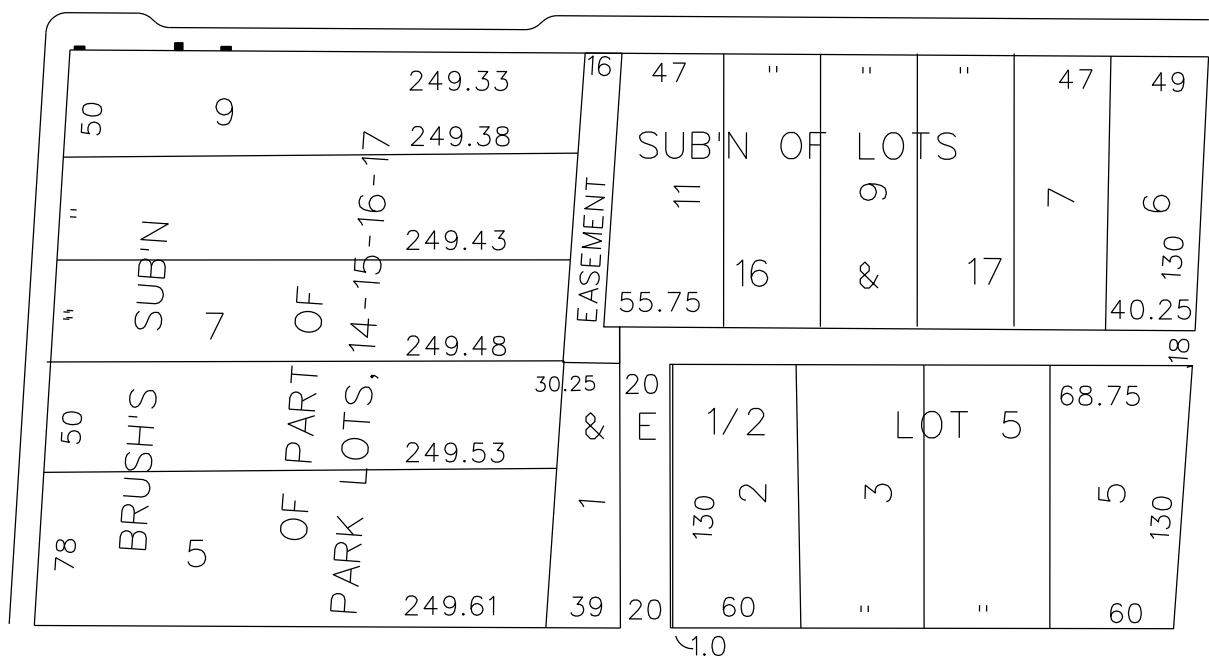
PETITION NO. 116
 RONALD ROMAN
 275 E. FRANK ST.
 BIRMINGHAM, MICHIGAN 48009
 C/O DARRELL J. DINGES
 PHONE NO. 248 723-5790

"REVISED"



WOODWARD AVE. 120 FT. WD.

ERSKINE ST. 60 FT. WD.



JOHN R. ST. 60 FT. WD.

WATSON ST. 48 FT. WD.

■ - REQUEST ENCROACHMENT
 (With Outdoor Planters)

(FOR OFFICE USE ONLY)

CARTO 29 A

B					
A	REMOVE PLANTER FROM THE PETITION	WLW	KSM	KSM	4/4/18
DESCRIPTION		DRWN	CHKD	APPD	DATE
REVISIONS					
DRAWN BY	WLW	CHECKED	KSM		
DATE	03-29-18	APPROVED			

REQUEST ENCROACHMENT
 INTO ERSKINE
 AT 3150 WOODWARD AVE.
 (With Outdoor Planters)

CITY OF DETROIT CITY ENGINEERING DEPARTMENT SURVEY BUREAU	
JOB NO.	01-01
DRWG. NO.	X 116