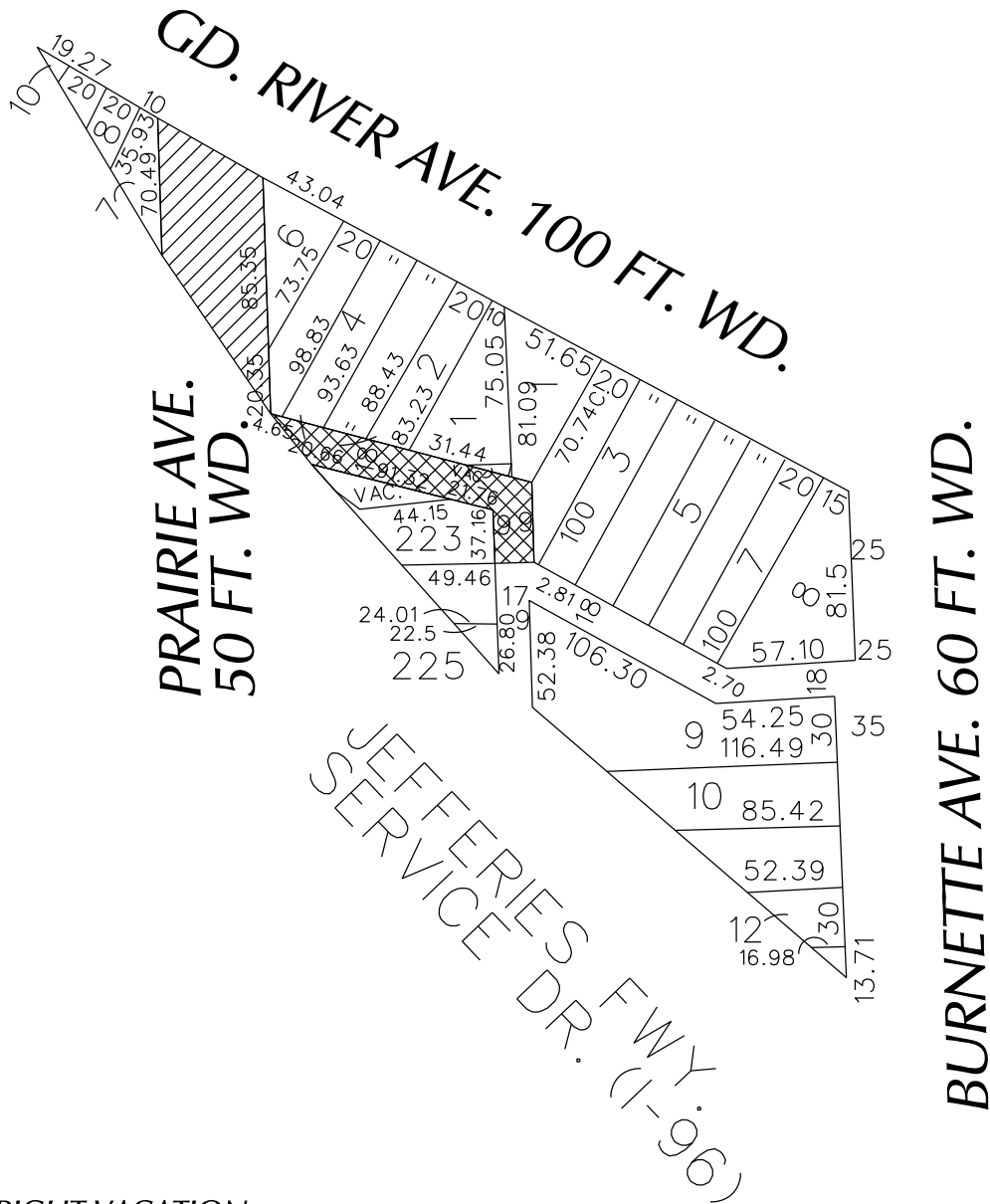


PETITION NO. 453
 STRAIGHT GATE INTERNATIONAL CHURCH
 C/O GIFFELS WEBSTER
 28 W. ADAMS, SUITE 1200
 DETROIT, MICHIGAN 48226
 SCOTT CLEIN P.E.
 PHONE NO. 313 962-4442



- OUTRIGHT VACATION



- CONVERSION TO EASEMENT

(FOR OFFICE USE ONLY)

CARDO 7 A

B					
A					
DESCRIPTION	DRWN	CHKD	APPD	DATE	
REVISIONS					
DRAWN BY	WLW	CHECKED	KSM		
DATE	12-18-18	APPROVED			

CONVERSION TO EASEMENT
 PRAIRIE AVE. 50 FT. WD.
 OUTRIGHT VACATE
 THE EAST/WEST PUBLIC ALLEY, 18 FT. WD.
 IN THE AREA BOUND BY
 BURNETTE, GD. RIVER AVE.
 AND JEFFERIES FWY. SERVICE DR. (I-96)

CITY OF DETROIT CITY ENGINEERING DEPARTMENT SURVEY BUREAU	
JOB NO.	01-01
DRWG. NO.	X 453