

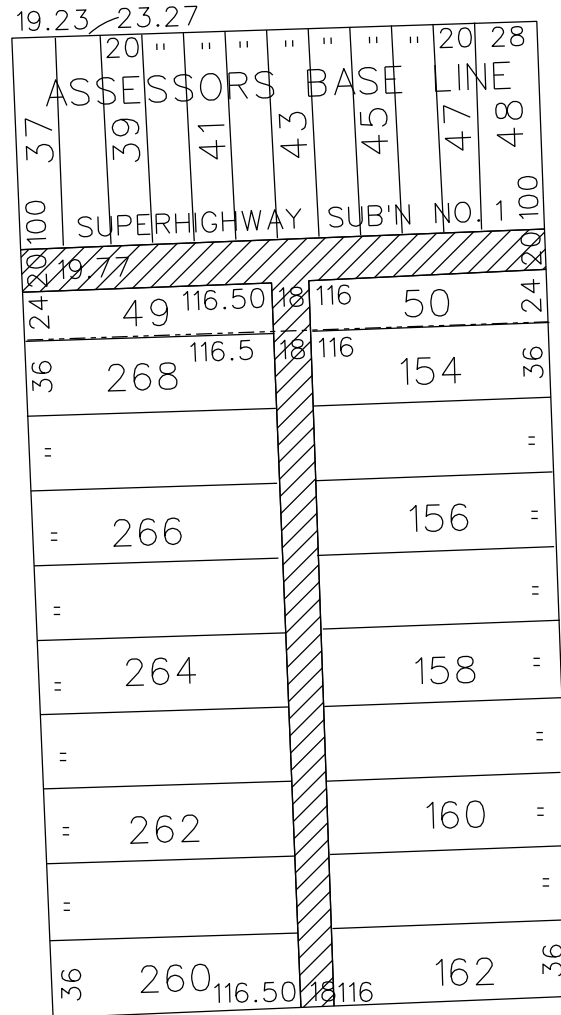
PETITION NO. 416
 NUMBER 1 CAR COMPANY, INC.
 4210 E. 8 MILE RD.
 DETROIT, MICHIGAN 48234
 C/O MIKÉ SEMMA
 PHONE NO. 248 789-9842



E. 8 MILE RD. 204 FT. WD.

DEAN AVE. 60 FT. WD.

SUNSET AVE. 60 FT. WD.



HAMLET AVE. 60 FT. WD.

 - CONVERSION TO EASEMENT

(FOR OFFICE USE ONLY)

CARTO 91 A

B					CONVERSION TO EASEMENT THE EAST/WEST PUBLIC ALLEY, 16 FT. WD. AND THE NORTH/SOUTH PUBLIC ALLEY, 18 FT. WD. IN THE BLOCK BOUND BY SUNSET, HAMLET, DEAN AVE. AND E. 8 MILE RD.	CITY OF DETROIT CITY ENGINEERING DIVISION SURVEY BUREAU
	A					
DESCRIPTION		DRWN	CHKD	APPD	DATE	JOB NO. 01-01 DRWG. NO. X 416
REVISIONS						
DRAWN BY		CHECKED				
09-17-18		KSM		APPROVED		