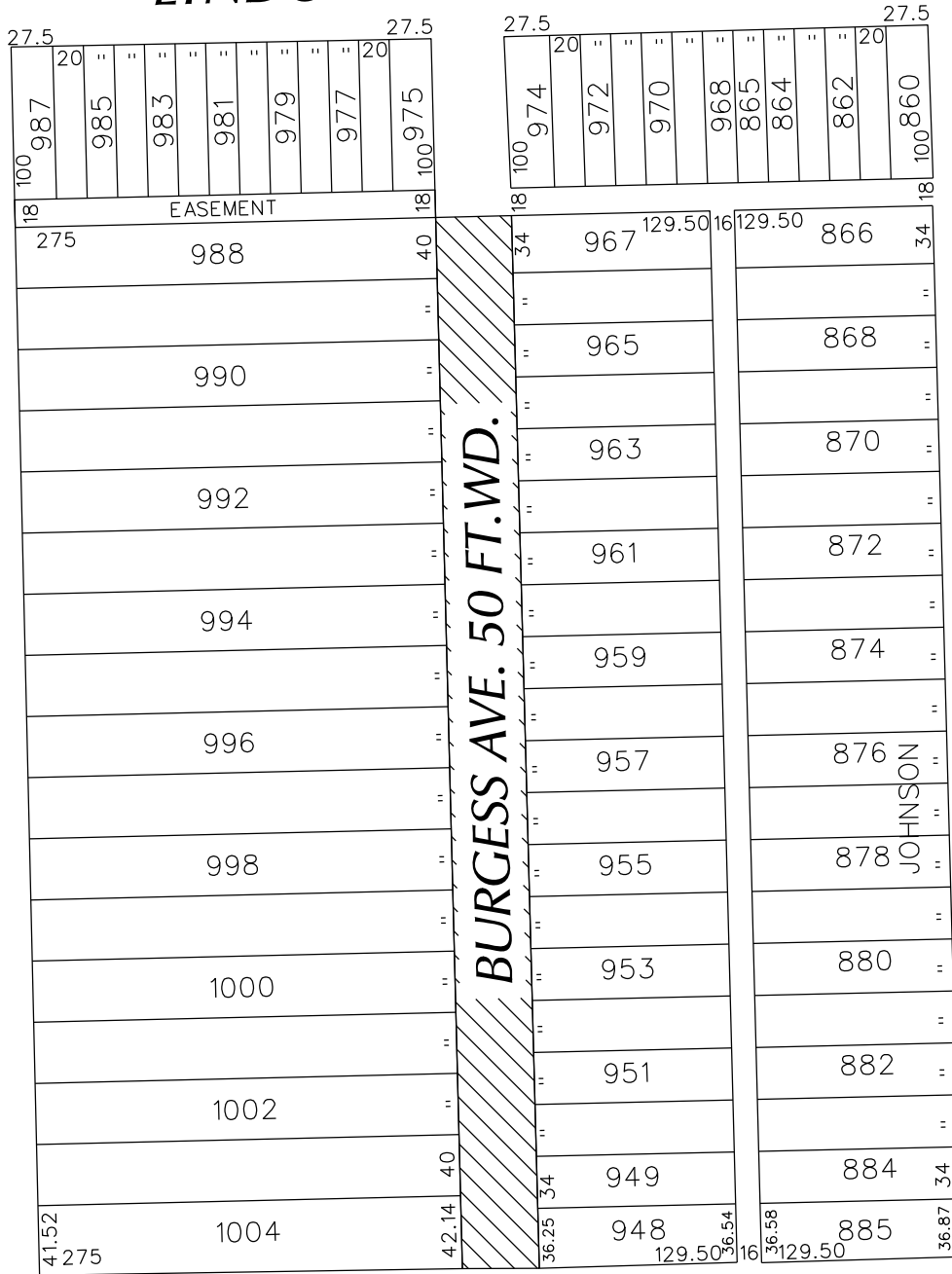


PETITION NO. 231
 MICHAEL E. WILLIAMS
 14371 CHAPEL ST.
 DETROIT, MICHIGAN 48223
 PHONE NO. 313 638-5048



LYNDON AVE. 76 FT. WD.

GREYDALE AVE. 50 FT. WD.



CHAPEL AVE. 50 FT. WD.

ACACIA AVE. 60 FT. WD.



- TEMPORARY STREET CLOSURE

(FOR OFFICE USE ONLY)

CARTO 112 C

B					
A					
DESCRIPTION		DRWN	CHKD	APPD	DATE
REVISIONS					
DRAWN BY	WLW	CHECKED	KSM		
DATE	04-04-18	APPROVED			

REQUEST TO TEMPORARY CLOSE
 BURGESS ST. 50 FT. WD.
 IN THE BLOCK BOUND BY
 CHAPEL, ACACIA, GREYDALE
 AND LYNDON AVE.

CITY OF DETROIT CITY ENGINEERING DEPARTMENT SURVEY BUREAU	
JOB NO.	01-01
DRWG. NO.	X 231