

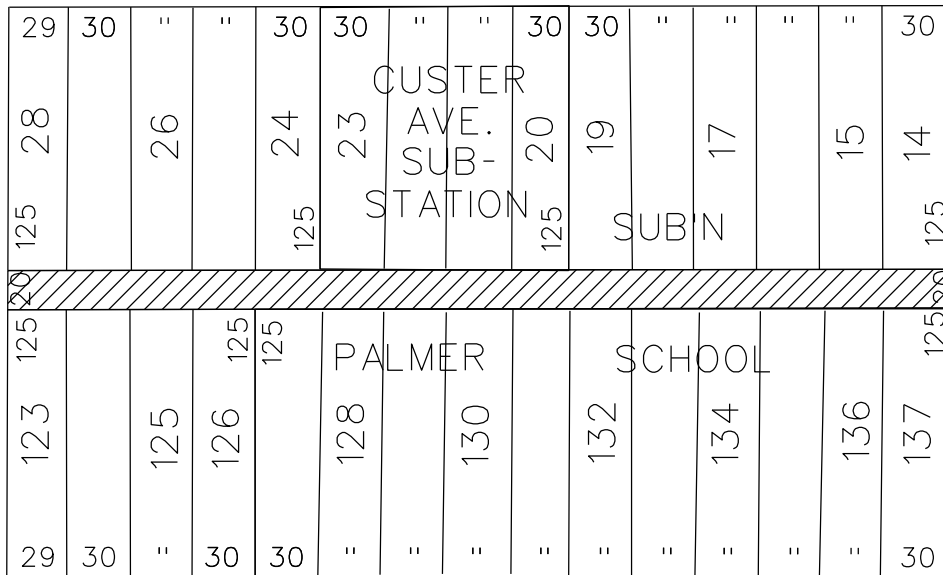
PETITION NO. 193
 PARADISE VALLEY PARTNERS
 1442 BRUSH ST. SUITE 400
 DETROIT, MICHIGAN 48226
 C/O CHRIS JACKSON
 PHONE NO. 313 727-2148



BEAUBIEN ST. 60 FT. WD.

CLUSTER AVE. 60 FT. WD.

ST. ANTOINE ST. 50 FT. WD.



HORTON AVE. 60 FT. WD.



- CONVERSION TO EASEMENT

(FOR OFFICE USE ONLY)

CARTO 31 A

B						CONVERSION TO EASEMENT THE EAST/WEST PUBLIC ALLEY, 20 FT. WD. IN THE BLOCK BOUND BY CLUSTER, HORTON AVE., ST. ANTOINE AND BEAUBIEN ST.	CITY OF DETROIT CITY ENGINEERING DEPARTMENT SURVEY BUREAU
A							JOB NO. 01-01
DESCRIPTION		DRWN	CHKD	APPD	DATE		DRWG.NO. X 193
REVISIONS							
DRAWN BY	WLW	CHECKED		KSM			
DATE	04-18-18	APPROVED					