

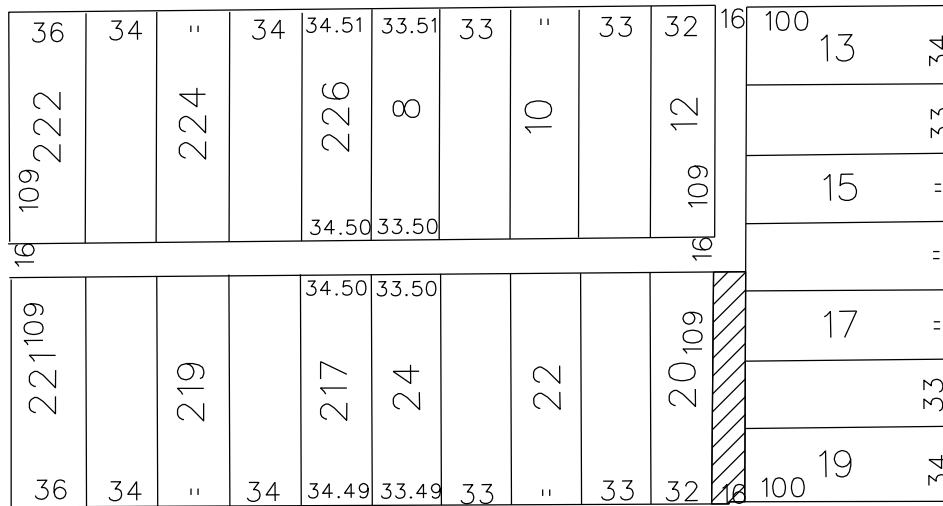
PETITION NO. 1831
 DETROIT COMMUNITY OUTREACH
 P.O. BOX 06650
 DETROIT, MICHIGAN 48206
 C/O DAVID J. O'CONNOR
 PHONE NO. 313 590-4365



McQUADE AVE. 50 FT. WD.

CALVERT AVE. 60 FT. WD.

DEXTER AVE. 100 FT. WD.



GLYNN AVE. 50 FT. WD.

 - CONVERSION TO EASEMENT

(FOR OFFICE USE ONLY)

CARTO 22 C

CONVERSION TO EASEMENT
 THE NORTH/SOUTH PUBLIC ALLEY, 16 FT. WD.
 IN THE BLOCK BOUND BY
 GLYNN, McQUADE, CALVERT
 AND DEXTER AVE.

CITY OF DETROIT
 CITY ENGINEERING DEPARTMENT
 SURVEY BUREAU
 JOB NO. 01-01
 DRWG. NO. X 1831

B					
A					
DESCRIPTION		DRWN	CHKD	APPD	DATE
REVISIONS					
DRAWN BY	WLW	CHECKED	KSM		
DATE	04-26-18	APPROVED			