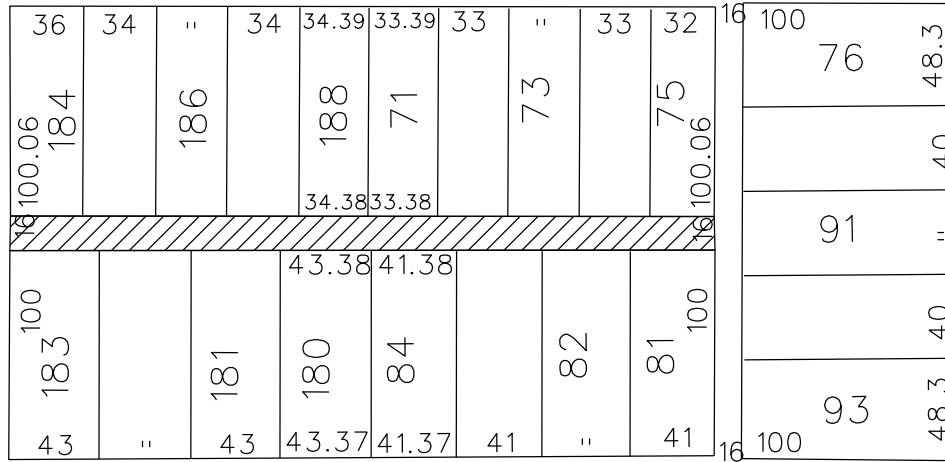


PETITION NO. 1823
 UNION CAPITOL DEVELOPMENT
 3535 CASS AVE.
 DETROIT, MICHIGAN 48226
 C/O ROBERT ZINSER
 PHONE NO. 734 330-1185



McQUADE AVE. 50 FT. WD.

W. CHICAGO AVE. 60 FT. WD.



DEXTER AVE. 100 FT. WD.

LONGFELLOW AVE. 50 FT. WD.

- CONVERSION TO EASEMENT

(FOR OFFICE USE ONLY)

CARTO 22 C

B					<p align="center">CONVERSION TO EASEMENT THE EAST/WEST PUBLIC ALLEY, 16 FT. WD. IN THE BLOCK BOUND BY LONGFELLOW, McQUADE, W. CHICAGO AND DEXTER AVE.</p>	CITY OF DETROIT CITY ENGINEERING DEPARTMENT SURVEY BUREAU	
	A					JOB NO. 01-01	
DESCRIPTION		DRWN	CHKD	APPD		DATE	DRWG. NO. X 1823
REVISIONS							
DRAWN BY	WLW	CHECKED	KSM				
DATE	03-02-18	APPROVED					