


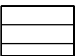
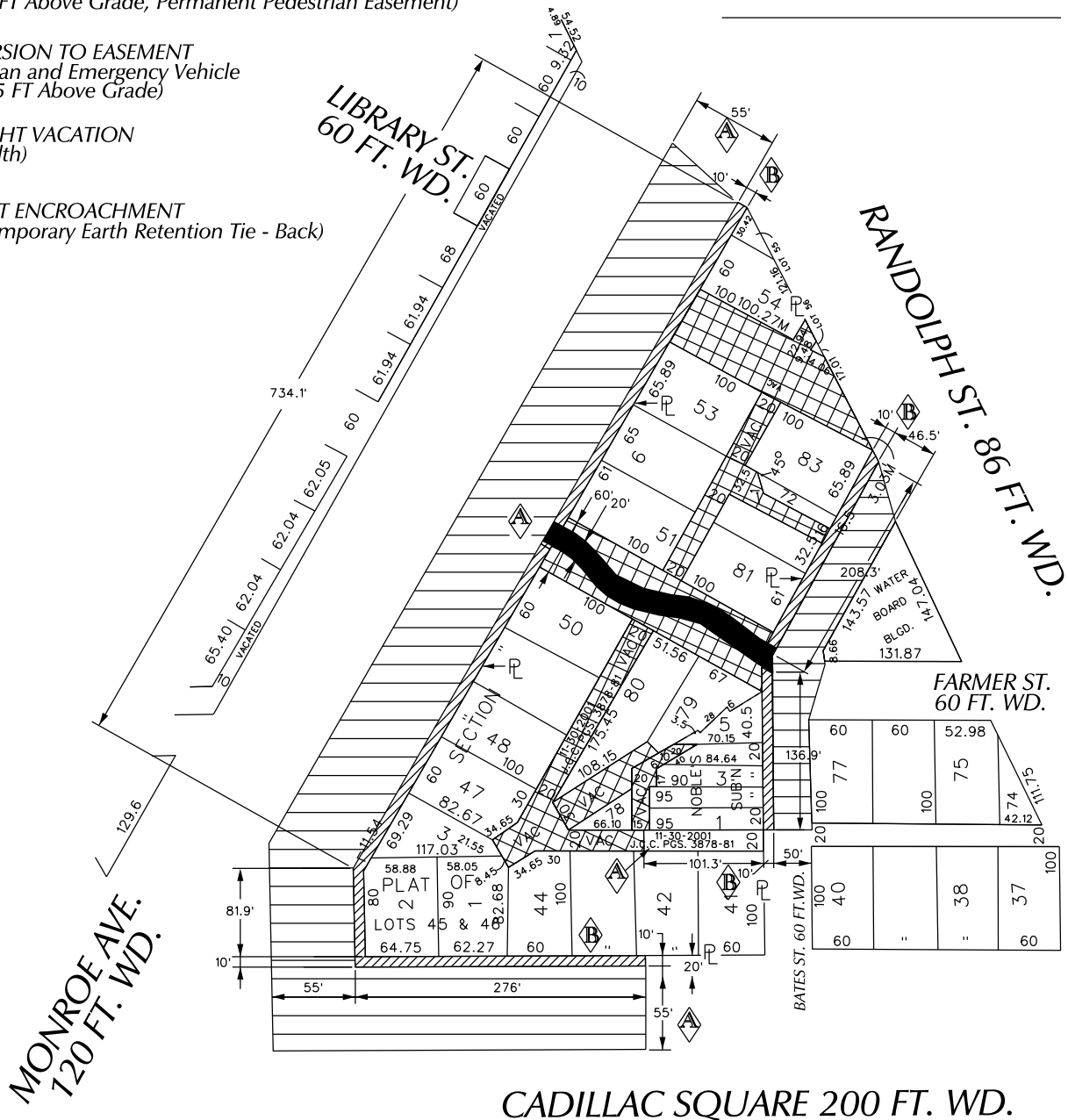


PETITION NO. 1821
 BEDROCK DETROIT
 C/O GIFFELS WEBSTER
 28 W. ADAMS, SUITE 1200
 DETROIT, MICHIGAN 48226
 C/O MICHAEL MARKS P.E.
 PHONE NO. 313 962-4442



"REVISED"

-  - OUTRIGHT VACATION
(0 to 10 FT Above Grade, Permanent Pedestrian Easement)
-  - CONVERSION TO EASEMENT
(Pedestrian and Emergency Vehicle
0 to 13.5 FT Above Grade)
-  - OUTRIGHT VACATION
(Full Width)
-  - REQUEST ENCROACHMENT
(With Temporary Earth Retention Tie - Back)



(FOR OFFICE USE ONLY)

CARTO 28 A

B	CHANGE FROM OUTRIGHT VACATION TO CONVERSION TO EASEMENT	WLW	KSM	KSM	9/28/18
A	REMOVING THE TEMPORARY EARTH RETENTION TIE BACK, REMOVE THE REQUEST TO VACATE ALLEY AND REMOVE THE UNDERGROUND RAMP AND TUNNEL	WLW	KSM	KSM	7/27/18
DESCRIPTION		DRWN	CHKD	APPD	DATE
REVISIONS					
DRAWN BY	WLW	CHECKED		KSM	
DATE	04-03-18	APPROVED			

REQUEST TO OUTRIGHT VACATE AND
 CONVERSION TO EASEMENT
 VARIOUS PUBLIC STREETS AND ALLEYS AND
 REQUEST ENCROACHMENTS OF
 MONROE AVE, A PORTION OF BATES ST. AND CADILLAC SQ.
 IN THE AREA BOUND BY
 MONROE AVE, RANDOLPH AND BATES ST.
 AND CADILLAC SQUARE

CITY OF DETROIT	
CITY ENGINEERING DEPARTMENT	
SURVEY BUREAU	
JOB NO.	01-01
DRWG. NO.	X 1821