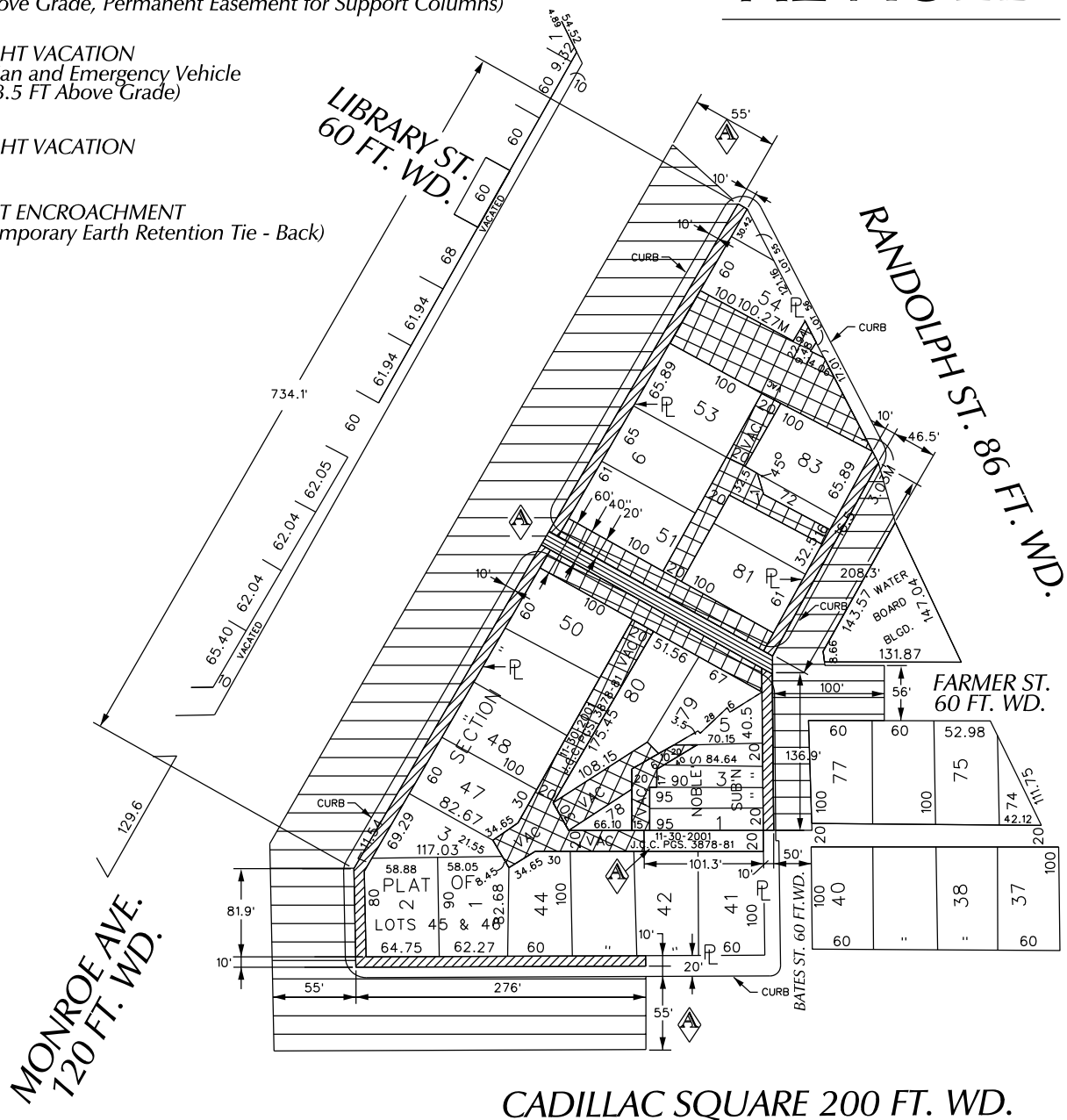


PETITION NO. 1821  
 BEDROCK DETROIT  
 C/O GIFFELS WEBSTER  
 28 W. ADAMS, SUITE 1200  
 DETROIT, MICHIGAN 48226  
 C/O MICHAEL MARKS P.E.  
 PHONE NO. 313 962-4442



**"REVISED"**

- BELOW / ABOVE GRADE OUTHRIGHT VACATION  
(8 FT Above Grade, Permanent Easement for Support Columns)
- OUTHRIGHT VACATION  
(Pedestrian and Emergency Vehicle  
Up to 13.5 FT Above Grade)
- OUTHRIGHT VACATION
- REQUEST ENCROACHMENT  
(With Temporary Earth Retention Tie - Back)



(FOR OFFICE USE ONLY)

CARTO 28 A

REQUEST TO OUTHRIGHT VACATE  
 VARIOUS PUBLIC STREETS AND ALLEYS AND  
 REQUEST ENCROACHMENT OF  
 BATES ST. AND A PORTION OF MONROE AVE. AND CADILLAC SQ.  
 IN THE AREA BOUND BY  
 MONROE AVE., RANDOLPH AND BATES ST.  
 AND CADILLAC SQUARE

CITY OF DETROIT  
 CITY ENGINEERING DEPARTMENT  
 SURVEY BUREAU

JOB NO. 01-01

DRWG. NO. X 1821

<b>B</b>					
<b>A</b>	REMOVING THE TEMPORARY EARTH RETENTION TIE BACK, REMOVE THE REQUEST TO VACATE ALLEY AND REMOVE THE UNDERGROUND RAMP AND TUNNEL.	WLW	KSM	KSM	7/27/18
	<b>DESCRIPTION</b>	<b>DRWN</b>	<b>CHKD</b>	<b>APPD</b>	<b>DATE</b>
<b>REVISIONS</b>					
<b>DRAWN BY</b>	WLW	<b>CHECKED</b>		KSM	
<b>DATE</b>	04-03-18	<b>APPROVED</b>			