




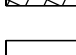
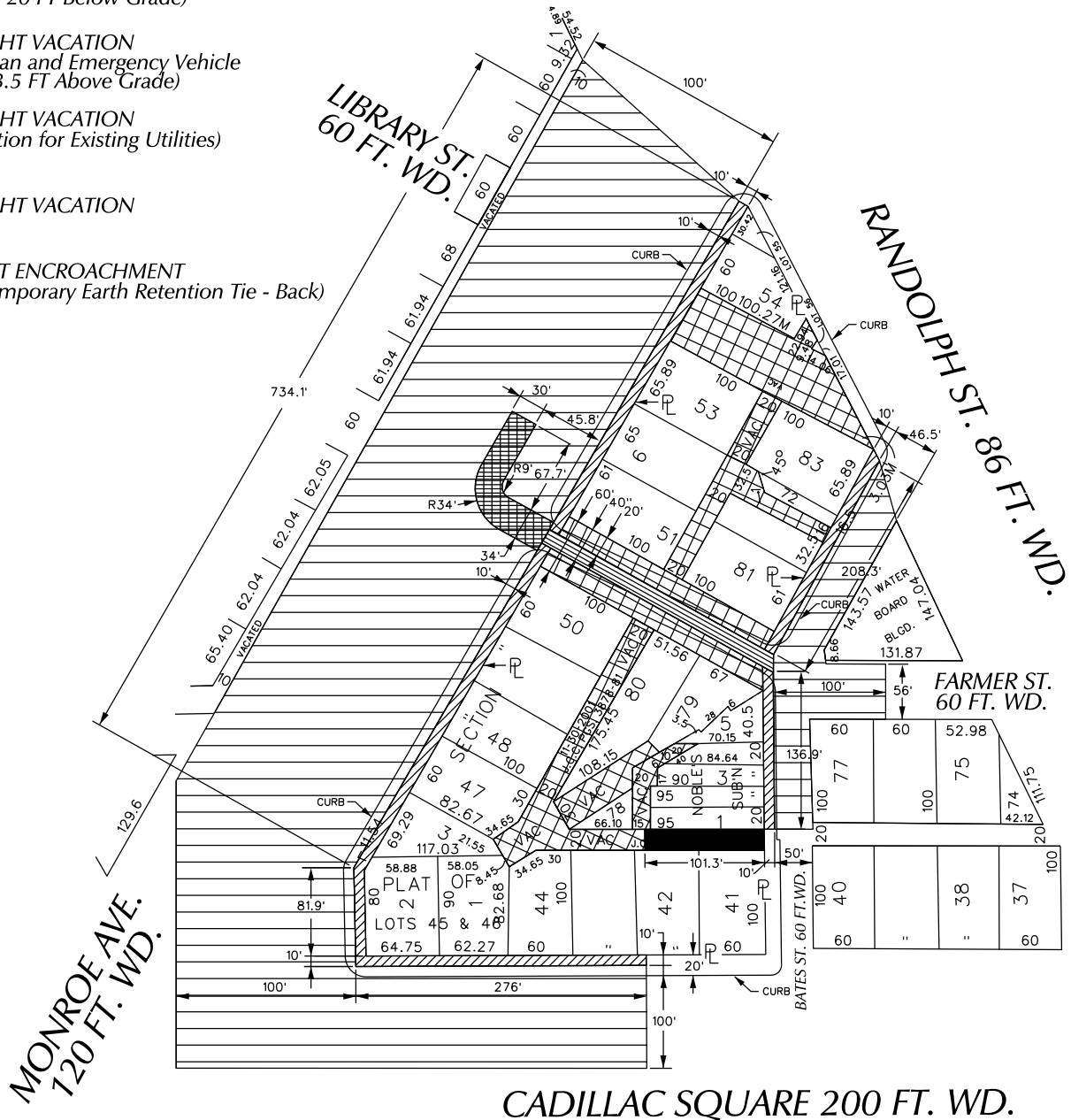


PETITION NO. 1821  
 BEDROCK DETROIT  
 C/O GIFFELS WEBSTER  
 28 W. ADAMS, SUITE 1200  
 DETROIT, MICHIGAN 48226  
 C/O MICHAEL MARKS P.E.  
 PHONE NO. 313 962-4442



-  - BELOW / ABOVE GRADE OUTHRIGHT VACATION  
(8 FT Above Grade, Perminate Easement for Support Columns)
-  - BELOW GRADE OUTHRIGHT VACATION  
(3 FT TO 20 FT Below Grade)
-  - OUTHRIGHT VACATION  
(Pedestrian and Emergency Vehicle  
Up to 13.5 FT Above Grade)
-  - OUTHRIGHT VACATION  
(Reservation for Existing Utilities)
-  - OUTHRIGHT VACATION
-  - REQUEST ENCROACHMENT  
(With Temporary Earth Retention Tie - Back)



(FOR OFFICE USE ONLY)

26.67 127.02 60 " " 60 55 45 55.39 55 55 40.91  
 138.02 118.80 4.4 63.51 27.25  
 CARTO 28 A

**REQUEST TO OUTHRIGHT VACATE  
 VARIOUS PUBLIC STREETS AND ALLEYS  
 AND REQUEST ENCROACHMENT  
 MONROE AVE. AND A PORTION OF CADILLAC SQ.  
 IN THE AREA BOUND BY  
 MONROE AVE., RANDOLPH AND BATES ST.  
 AND CADILLAC SQUARE**

**CITY OF DETROIT  
 CITY ENGINEERING DEPARTMENT  
 SURVEY BUREAU**

**JOB NO. 01-01**  
**DRWG. NO. X 1821**

<b>B</b>					
<b>A</b>					
<b>DESCRIPTION</b>	<b>DRWN</b>	<b>CHKD</b>	<b>APPD</b>	<b>DATE</b>	
<b>REVISIONS</b>					
<b>DRAWN BY</b>	<b>WLW</b>	<b>CHECKED</b>	<b>KSM</b>		
<b>DATE</b>	<b>04-03-18</b>	<b>APPROVED</b>			