

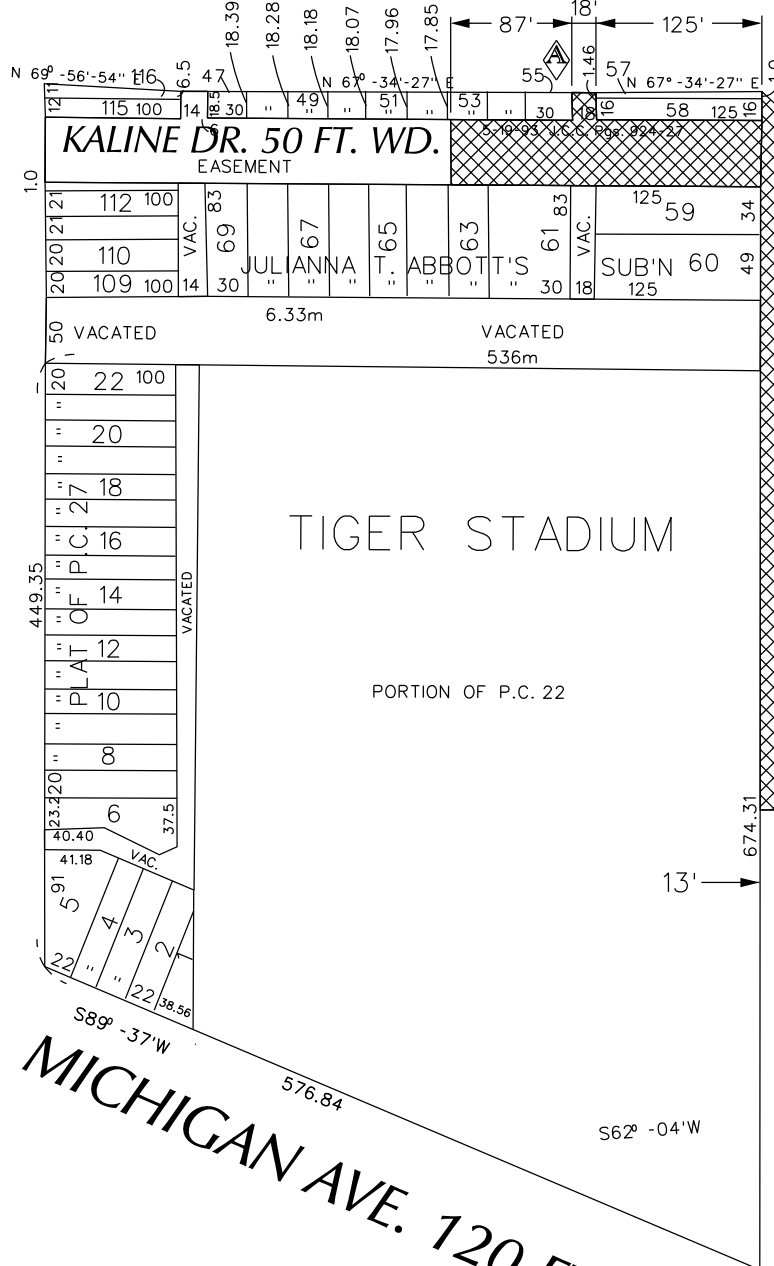
PETITION NO. 1812
 LARSON REALTY
 C/O GIFFELS WEBSTER
 28 W. ADAMS, SUITE 1200
 DETROIT, MICHIGAN 48226
 C/O MATT WOJCIECHOWSKI
 PHONE NO. 313 962-4442

"REVISED"



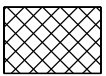
FISHER FREEWAY
 W. FISHER FWY. SERVICE DR.

COCHRANE AVE. 65 FT. WD.



TRUMBULL AVE. 100 FT. WD.

MICHIGAN AVE. 120 FT. WD.



- OUTRIGHT VACATION

(FOR OFFICE USE ONLY)

CARTO 29 D

B					
A	ADDDING A PORTION OF KALINE DR. 50 FT. AND A NORTH/SOUTH PUBLIC ALLEY 18 FT. WD. TO OUTRIGHT VACATE.	WLW	KSM	KSM	4/17/18
DESCRIPTION		DRWN	CHKD	APPD	DATE
REVISIONS					
DRAWN BY	WLW	CHECKED		KSM	
DATE	01-26-18	APPROVED			

REQUEST TO OUTRIGHT VACATE
 A PORTION OF TRUMBULL AVE. 100 FT. WD.
 A PORTION OF KALINE DR. 50 FT. WD.
 NORTH/SOUTH PUBLIC ALLEY 18 FT. WD.
 IN THE AREA BOUND BY
 COCHRANE, TRUMBULL, MICHIGAN AVE.
 AND W. FISHER FWY. SERVICE DR.

CITY OF DETROIT
CITY ENGINEERING DEPARTMENT
SURVEY BUREAU

JOB NO. 01-01
DRWG. NO. X 1812